

MAPLE LEAVES

Journal of

THE CANADIAN PHILATELIC SOCIETY OF GREAT BRITAIN

FOUNDED 1938

INCORPORATED 1946

Edited by JAMES E. WOODS

2 Hengrave Road, Honor Oak Park, London, S.E.23.

Opinions expressed in the various articles in this journal are those of the writers, and not necessarily endorsed by the Society.

Published Every Second Month by the Canadian Philatelic Society of Great Britain

Issued Free to Members.

Additional copies, 3/- each.

Vol. 8, No. 8

DECEMBER 1960

Whole No. 68

NOTES AND COMMENTS

Editorial

Once more the Christmas season is with us and this edition heralds another Year Book.

In view of the number of articles in this number we are keeping these notes to a minimum.

Exchange Packet

A warm word of welcome to our new Exchange Packet Secretary, Mr. J. A. Grant. As with his predecessors he looks forward to as much support from our membership to keep a steady flow of material in circulation. Get down to sorting out those duplicates and send a booklet or two along now.

Handbooks

Sales of our recent publications are moving along at a steady pace and up to date some very excellent reviews have been noted. One of our Canadian members has written to say what a wonderful job the Society is doing in publishing these handbooks, well printed and reasonably priced. These kind words are most appreciated.

Whilst on the matter of handbooks we hear from Bob Woolley of B.N.A.P.S. that three handbooks are in preparation by that Society. A revised Perfin Handbook, a revised edition of McCready's work on Flag Cancellations and also one on Booklets and panes. Publication date of the first two items is the latter part of 1961.

Copies will eventually be for sale through your Editor, so please watch for further announcements.

CONVENTION AUCTION

Llandudno 1960

Well, the hopes expressed in the April Maple Leaves were realised and it was an avalanche after all. With the late arrivals there were 477 lots on offer, a record that will probably stand for a few years and the total sales amounted to just on £1,200, another record which will take some beating.

In all, 109 members bid in the sale of whom 89 succeeded in getting something. Overseas support was good and the 55 bidders from abroad included representatives from Australia, Sweden, Italy and Kenya as well as Canada and U.S.A. The competition on most material was acute, the "Covers" and "Cancellations" sections being especially well contended. On the other hand it was obvious that straightforward "stamps" (excluding varieties and so on of course) do not attract attention unless **really** fine. Some quite nice but quite ordinary Pence issues found no favour in the eyes of the bidders but a lovely copy of an 1859 10c. bright red-purple proved itself with a realisation of £5 and a fine 17c. deep blue made 65/-. I feel this is a point worth emphasising for the benefit of potential vendors in future auctions.

This summary cannot be closed without expressing my own (and the Society's) thanks to all those who contributed to the success of the sale. In particular we have Mr. H. F. Blease, Jim Cater, Dr. Jacob, Pierre Langlois, Jim Macaskie, and Aubrey Smith, all of whom sent in Gift lots for the Funds. Then there are all those folk who rallied round and sent P.O.'s and stamps to help expenses, space prevents listing them all and the most generous donation has to remain anonymous because that's the way the donor wants it. Jim Woods saved me hours of work by obtaining and addressing all the envelopes for despatching the catalogues and finally I must mention Charles Hollingsworth. In blithe ignorance of what the future held he offered to help and got stuck with the job of auctioneer's scribe for his trouble. "Never again" quoth he when he had time to draw breath at the end but let it be known that he turned in a flawless record of the afternoon's activities and seemed none the worse later that evening! Many thanks Charles, Jim and all of you.

DAVID FORTNUM.

PRESIDENT'S MESSAGE



As one who has been associated with the Society since the early days when our total membership comprised barely half a bus load, it is with a feeling of pride and pleasure that I now pen this message as President of what has now become the largest specialist Society in the British Isles.

My first thought on assuming this high office is one of sincere appreciation of the honour which has been bestowed upon me by my election as your President. To follow in the footsteps of my predecessors who have successively raised the standard and growth of the Society to the present high position in the philatelic world, is no easy task. However I am willing to do all that is expected of me and more, in furthering the interests and well-being of the Society. In this endeavour, I am comforted by the knowledge that supporting me is a willing and competent team of Society Officers who voluntarily work so hard on your behalf in the little

free time at their disposal and to whom the Society owes so much. They deserve every support which you are able to give them.

The past year has been an outstanding one for the Society and an unqualified success for my immediate predecessor—Jim Macaskie, in whose year of office was held the great International Exhibition in London. This event attracted many of our members to the Metropolis, when on the occasion of our Luncheon and Reception we were able to meet and entertain a number of distinguished philatelists from Canada and the U.S.A.

The second highlight of the year was the Convention at Llandudno, our first in Wales. From both the philatelic and social angles combined with the magnificent scenery and excellence of the hotel, it was a most successful and enjoyable Convention. A full report will be found elsewhere in this issue.

Looking ahead to the future, plans for the next Convention are already well advanced. The Convention will be held from October 4th to October 7th, 1961, and the venue is the Hotel Metropole, Brighton, one of the finest hotels on the South Coast. The management have kindly placed at our disposal the excellent series of Reception and Conference rooms for our Exhibition and Meetings. For the Exhibition, we shall have on loan the frames of the Brighton and Hove Philatelic Society which we used at the Eastbourne Convention and if required the use of similar frames belonging to the Worthing Society.

May I remind you that the success of the Exhibition depends on your support in the various Competition Classes, details of which will be announced as soon as possible in order to give you plenty of time to prepare exhibits.

The Society now possesses several handsome trophies for annual award and it is with pleasure that I am able to announce an addition to these through the kindness of Mrs. Stephenson, the wife of our Founder President, who has presented a trophy for annual Competition at the Convention. Mrs. Stephenson has requested that this trophy shall be awarded to the best entry of "Admiral" issues.

The social side of the proceedings, particularly in regard to the entertainment of the ladies will not be neglected for we realise how important is the presence of the ladies to the success of our Conventions. There is no need for me to exert any pressure on our regular attenders who have been coming year after year and enjoy renewing the friendships which they have made. If you have not attended a Convention, make a special effort to come next year and join in the fun. You can be assured of a warm welcome.

This being the Christmas number of "Maple Leaves", I conclude this message by sending Greetings and Best wishes to all Members for a Happy Christmas and Prosperous New Year.

STANLEY GODDEN.

PAST PRESIDENT'S MESSAGE

Now that my year in office has come to an end I am able to look back on many enjoyable events. The London luncheon has been mentioned in previous issues and many reports concerning the Llandudno Convention are included in this issue but, in connection with the Convention, I do want to pay particular tribute here to my Convention Committee—

Mr. and Mrs. G. Whitworth and Dr. and Mrs. R. Willan, who did so much "behind the scenes" to ensure its success, and to David Fortnum whose hard work on the auction established a new record total of sales. I am grateful also to all who supported the Convention either by taking part in it or, where this was not possible, by sending in exhibits or supporting the auction. All these combined to make the event one which was not only very successful from the financial aspect but which I think was enjoyed by all who attended.

The Convention was the culmination of a very busy year and I should like to express thanks here to all the officers of the Society, who between them have had to cope with a tremendous amount of work in the past twelve months. Much of this activity is rather taken for granted because it does not often come to the notice of the majority of the members except in the general sense of appreciation that the Society is operating smoothly in all its branches, but I know that it is a source of considerable amazement to non-members that so much is achieved by voluntary efforts.

In wishing your new President, Mr. Stanley Godden, all success in the year ahead I can assure him that, with the support of such a fine team of officers, he need have no fears for the well-being of this Society.

With Best Wishes for Christmas and the New Year to you all.

J. P. MACASKIE.

CANADIAN PHILATELIC SOCIETY OF GREAT BRITAIN

Appointments for 1960-61

Office	Nominee	Proposer	Seconder
President	Mr. S. H. Godden	Mr. J. P. Macaskie	Mr. W. E. Lea
Vice President	Mr. G. F. George	Mr. S. H. Godden	Mr. L. Baresch
Committee (South)	Mr. L. D. Carn	Mr. J. C. Cartwright	Mr. J. E. Woods
	Mr. J. C. Cartwright	Mr. S. H. Godden	Dr. C. W. Hollingsworth
	Mr. S. R. Rutter	Mr. J. E. Woods	Mr. S. H. Godden
Committee (Scotland)	Mr. J. M. Allen	Mr. A. E. Stephenson	Mr. J. Hannah
Committee (North)	Mr. G. Whitworth	Mr. J. P. Macaskie	Dr. C. W. Hollingsworth
Treasurer	Mr. D. L. Fortnum	Mr. S. H. Godden	Mr. J. P. Macaskie
Secretary	Dr. C. W. Hollingsworth	Mr. S. H. Godden	Mr. J. P. Macaskie

Convention Awards 1960

Aiken Trophy—Lt/Col. R. H. Webb—articles on M.P.O.'s.

Founder's Trophy—Dr. R. Willan—Newfoundland.

Godden Cup—Mr. J. J. Bonar—19th Century Registration rates.

Bunny Cup—Mr. R. Woodall—N.W.T. Post Offices.

Admiral Cup—Mr. J. Hannah.

Lees-Jones Trophy—Mr. H. H. Brown—Q.E. Booklets.

DIPLOMAS

Contributed Class A

1. Mr. J. J. Bonar—Registration rates.
2. Dr. C. W. Hollingsworth—Flag Cancellations.
3. Mr. J. F. Bird—Flaws and re-entries.

Contributed Class B

1. Mr. R. Woodall—N.W.T. Post Offices.
2. Mr. H. H. Brown—Q.E. Booklets.
3. Mr. A. E. Stephenson— $\frac{1}{2}$ cent 1908.

Group Displays

1. Manchester.
2. Precancel.

Research

1. Dr. C. W. Hollingsworth—Calgary and Vancouver R.P.O.'s.
2. Mr. E. A. Smythies—Initial Cancellations.
3. Mr. G. Whitworth—5c. Beaver.

ENLARGED STAMP ILLUSTRATIONS

It is proposed, should there be sufficient demand within the Society, to obtain and supply to members, enlarged prints of various popular issues for marking up varieties. Blocks are already available for the production of prints of the Edward and Numeral issues, and there is already sufficient demand for the obtaining of one for the Admiral issue. Suggestions have been received for prints of the Small Cents, and Map stamp.

The most useful size would seem to be approximately 2in. by 2½in., and where there are several similar denominations of one issue, it would be most economical to have a print with blank spaces where the letters and figure of value appear. The cost from previous experience would probably be in the region of 1d. each.

To attempt to judge the demand, it would be appreciated if any members interested in obtaining prints of their favourite issue, would contact the **Secretary** giving details of the stamps concerned, and the probable number of prints required. Also if any members have blocks of their own suitable for this purpose, which they would be willing to loan, the Secretary would appreciate hearing from them.

Should there be sufficient interest, it is hoped to make an announcement in the next issue of *Maple Leaves*.

OUR NEW FELLOW

This year only one new Fellow was elected and who could make such a popular choice as our Past President J. P. Macaskie besides assisting in much useful Research work on his stamps it is really in his most indefatigable work on behalf of the Society that we know him. In 1949 he was thrown into Committee work at the deep end to start a Group in the West Riding of Yorkshire. This he did with great thoroughness. In 1950 he was handed the next Convention to prepare for the next year at Harrogate. This he did virtually single handed.

It was as Treasurer where his light shone out. To those of us who knew the state of our finances when he took over will never forget the shambles he inherited. He sorted out our, shall we say, financial embarrassment and gradually built up our now very sound financial state.

His next job was the Presidency of the Society. Here again he chose the hard road because during his term he had perhaps the busiest and toughest year any president has had to face up to.

It has been said that any member taking office is expected to do the job he is given, but it should be remembered a man is judged by the quality of work he puts into it. Mac put both quality and hard work.

Congratulations Mac, but don't think we are letting off the lead, not yet.

A.E.S.

NEWFOUNDLAND CORNER

by Dr. R. Willan, F.C.P.S.

It will be generally conceded that of all Newfoundland stamps none is more interesting than the 5c brown seal of 1866 and the later printings from the same plate in black and in blue. Without arguing whether seals have or have not feet, it must be agreed that Jeens' engraving depicts a delightful animal with the entire northern seas for playground. But apart from this "thematic" interest, a close examination reveals a wealth of markings on the stamps not rivalled by any others, even including the lithographed Guy issue. These markings are so definite and varied that the only obstacle to plating the stamp is the difficulty in finding multiples to fix the plate positions. I can identify more than half the positions, but can get no further unless I can see multiples to fix the remainder.

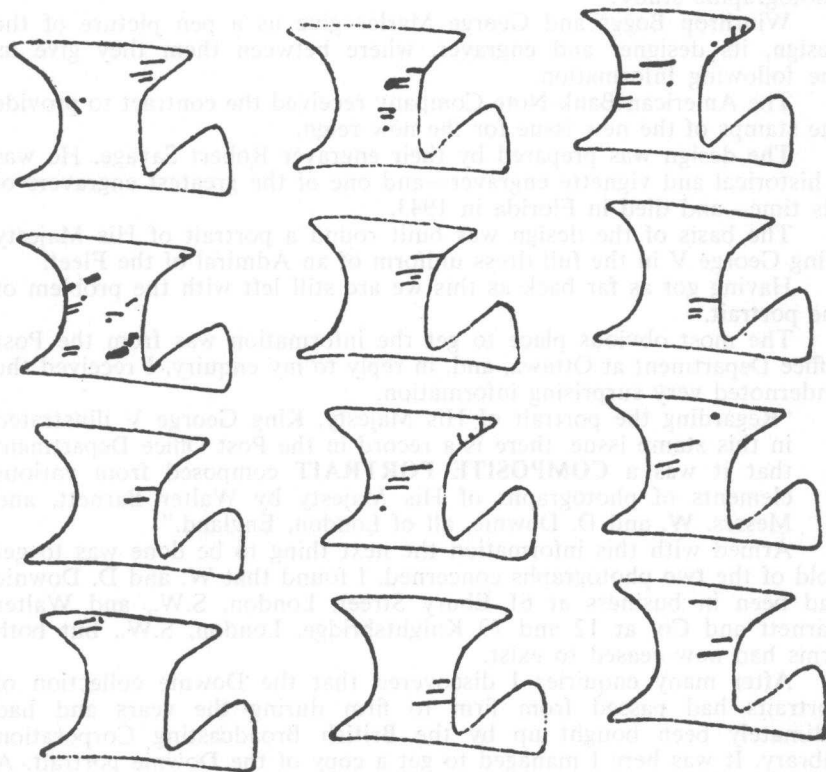
The most obvious feature is the "position dot" which appears on all except the bottom row of stamps. It appears in relation to the right outer frame line—either just inside, just outside, touching, or cut by this line. Its vertical position is about the middle of the bottom label bearing the value, but this again varies slightly and may be a little higher or a little lower. The most striking feature of the dot is its large size, which varies but is considerably greater than that of the corresponding dots on other values of the issue. When a plate is laid down, horizontal and vertical guide lines are scratched lightly on the plate, the required distances apart, and at the intersections of these lines small dots are made with a punch. A side point is attached to the shaft of the transfer roller, and the plate is so adjusted on the bed of the transfer press that this point impinges on the punched dot, and the impression is then rolled in. Usually the side point is released by a spring so that it is clear from the guide dot during the rocking, and the dot remains in its original state. It would appear that in the press used for laying down the 5c seal, the side point was not released and was rolled in, so increasing the size and depth of the dot. In several of the stamps there is a second dot near the position dot. These are the original guide dots which have not been accurately engaged by the side point. As to why only this stamp shows these large dots, it may be pointed out that the American Bank Note Co. was a combine of several firms still working on their own premises, and this plate may well have been laid down by a different establishment from the others.

Portions of horizontal guide lines appear through the numerals and letters of "FIVE CENTS" at the bottom in many of the stamps. These are at the level of the guide dots. The vertical guide lines only show at the right hand edge of stamps in the tenth vertical row, and in a similar position on stamp No. 91.

Besides these dots and guide lines, almost all the stamps show distinctive flaws which fall into two groups. In about five positions the flaws are due to a second application of the transfer roller. These are all "fresh entries", having been done before the plate went to press, as they occur identically in all printings. There are no true re-entries—impressed subsequently to the first prints.

The second group, comprising the great majority of the stamps on the sheet, shows flaws in the form of dots and lines. They occur in all parts of the sheet and appear mainly in the letters of "NEWFOUND-

LAND", but a few in the letters of value at the bottom. I know only two of these flaws in the vignette portion of the stamp. No. 42 has a dot above the seal's nose, and one stamp whose position I have not yet ascertained has a spot in the iceberg below "F". These marks are not re-entries as they cannot be identified with any part of the stamp design. What are they? Some of them are mere dots, but many have the appearance of short engraved lines. Moreover they are predominantly—more than 90%—in the right half of the stamp.



"DL" of "NEWFOUNDLAND" is the commonest site of considerable flaws, and if these are examined carefully it will be found that many have a certain resemblance. I give sketches of the letter "L" in a number of the stamps which I think show this definitely. These marks are obviously not on the transfer roller. What then can cause similar marks to recur on many stamps in approximately similar positions?

If the plate had been previously used for a stamp of the same size as the 5c seal, and a portion of this stamp were more deeply engraved than the rest, this part would tend to remain slightly if the burnishing off of the original impressions were not absolutely complete, and these remains would show in approximately the same position on the seal stamps subsequently impressed. This is a possible explanation of the markings, and the only one of which I can think. If anyone can make an alternative suggestion, I should be very glad to hear it.

THE ADMIRAL DESIGN AND MISSING PORTRAIT

A. E. Stephenson, F.C.P.S.

Having been interested in the various portraits used in issues of Canadian stamps ranging from "Chalon Heads" to the modern Dorothy Wilding portraits, and being an enthusiast of the "Admiral" issue, I had always been intrigued by the portrait shown of H.M. King George V. What was the origin of this portrait? Was it from a painting or a photographic study?

Winthrop Boggs and George Marler give us a pen picture of the design, its designer and engraver, where between them they give us the following information.

The American Bank Note Company received the contract to provide the stamps of the new issue for the new reign.

The design was prepared by their engraver Robert Savage. He was a historical and vignette engraver—and one of the greatest engravers of his time—and died in Florida in 1943.

The basis of the design was built round a portrait of His Majesty King George V in the full dress uniform of an Admiral of the Fleet.

Having got as far back as this we are still left with the problem of the portrait.

The most obvious place to get the information was from the Post Office Department at Ottawa, and, in reply to my enquiry, I received the undernoted very surprising information.

"Regarding the portrait of His Majesty, King George V illustrated in this stamp issue, there is a record in the Post Office Department that it was a **COMPOSITE PORTRAIT** composed from various elements of photographs of His Majesty by Walter Barnett, and Messrs. W. and D. Downie, all of London, England."

Armed with this information the next thing to be done was to get hold of the two photographs concerned. I found that W. and D. Downie had been in business at 61 Ebury Street, London, S.W., and Walter Barnett and Co. at 12 and 79 Knightsbridge, London, S.W., but both firms had now ceased to exist.

After many enquiries I discovered that the Downie collection of portraits had passed from firm to firm during the years and had ultimately been bought up by the British Broadcasting Corporation Library. It was here I managed to get a copy of the Downie portrait. A glance at the portrait showed that it was certainly part of the composite portrait but it was still essential that the Barnett photograph be found to complete the design.

After innumerable lines of search, all failed to produce the portrait. An approach was made to the National Portrait Gallery with the same results but, through the kindness and courtesy of the Director of the Gallery, enquiries were made to the Lord Chamberlain's offices with similar results. However the following extract is part of a letter from the Press Secretary at Buckingham Palace to the Director of the National Gallery.

"I am unable to find any record of H. W. Barnett having been granted any special photographic sittings by King George V. This does not surprise me, since a permanent record of such an event would not have been a necessity in those days."

It is astonishing that the work of a firm who reached the status



The portrait, taken in 1903, by Messrs. W. and D. Downie of London used by Robert Savage in the preparation of the composite design for the Admiral issue.
Reproduced by kind permission of the Radio Times Hulton Picture Library



The portrait of King George V in the full dress of an Admiral of the Fleet attributed to **Walter Barnett of Kensington, London**, and used in the build up of the composite design of the Admiral issue by Robert Savage.

of being Royal Photographers should completely disappear in a matter of fifty years.

After months of searching a photograph, which was attributed to W. Barnett, was picked up in a second hand book shop and sent to me. This point has still to be confirmed and I would be pleased to get any further confirmation if any member can help.

The photograph does have all the characteristics and details of the uniform of the Admiral of the Fleet required in the design of the stamp.

In the illustrations of the two photographs it will be seen, in the Downie portrait, that the King is in the full dress uniform of a General of the Army, hardly the thing to depict or portray the "Sailor King", but it will be seen the head and neck are exactly what is required for the build up of the design which would give the side face view, which had become traditional in the requirements for stamp design, up to that date. In the case of the presumed Barnett photograph it will be seen that the portrait is full faced which would not be suitable for the traditional design, though the naval uniform details correspond exactly with those of the finished design. With the remainder of the vignette, as built up by Robert Savage, it will be seen that he used the basic design as shown in the three previous definitive issues, except for the lesser details, to build up what, in my own personal opinion, is perhaps one of the finest stamp designs Canada has produced.

The Design build up for the Admiral Issue

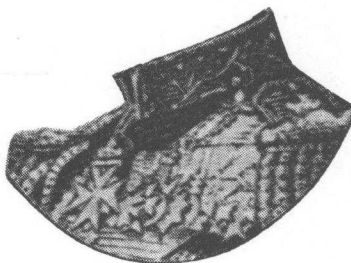
Robert Savage in preparing the vignette for the Admiral issue used the same basic design as was used in the three previous definitive issues, except for minor chances. (fig. 1.)



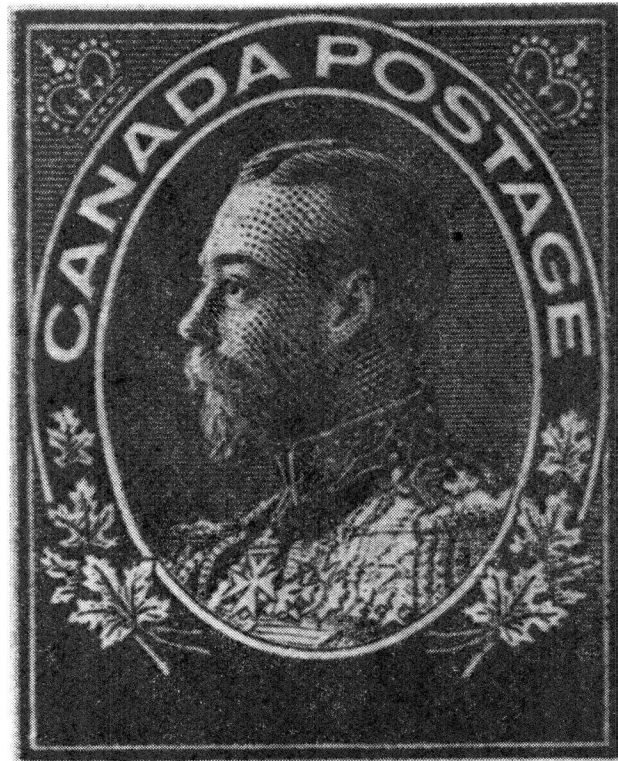
(fig. 1) Robert Savage's Vignette basis.



(fig. 2) The head portion used from the Downie portrait.



(fig. 3) The chest and uniform portion taken from the portrait attributed to W. Barnett.



(fig. 4) The final "build up" of the composite vignette and accepted design.

From the two portraits chosen to make the composite design it will be seen that the side face view of the Downie (fig. 2) portrait was ideal for stamp design, but the Army uniform was not exactly what was wanted to depict the "Sailor King". Again the full face of the presumed Barnett portrait would not lend itself to a good design of the traditional type, though the uniform details give all that is required (fig. 3).

**CANADIAN PHILATELIC SOCIETY
OF GREAT BRITAIN
YEAR BOOK SECTION**

CONSTITUTION AND RULES

- TITLE.** (1) The name of the Society shall be "The Canadian Philatelic Society of Great Britain."
- OBJECTS.** (2) The objects of the Society shall be:—
- (a) To associate those interested in the study of the postal history and postage stamps of the Dominion of Canada and Newfoundland or the Pre Confederation Colonies of British North America and to encourage such study inter alia by the holding of meetings, reading and publication of papers and the arrangement of private and public displays and exhibitions.
 - (b) To provide facilities for the disposal of Members' surplus material.
 - (c) To provide a library of philatelic literature relating to British North America for the use of members.
 - (d) To hold an Annual Convention which shall meet in rotation in Scotland, in the North of England and in the South of England.
- MEMBERSHIP.** (3) Candidates for admission as Members of the Society must be eighteen years of age or over. All applications for membership must be made on the official form. Candidates must either be proposed and seconded by members of the Society or furnish to the Secretary such references as he may reasonably require.
- (4) Candidates shall be admitted at the discretion of the Secretary, who may refer any application to the Committee. If the candidate is accepted, the Secretary shall notify him and shall send him a copy of the Rules, by which he shall then be bound. On payment of his subscription he shall be admitted to membership.
- (5) The Annual Subscription shall be Fifteen Shillings (\$2.00) or such sum as the Annual General Meeting may decide, payable in advance on the first day of October.
- (6) Any member who shall fail to pay his subscription by the 30th of April following the date it fell due, shall be liable to forfeit his membership. The Secretary and the Treasurer acting together shall have discretion to apply this rule.
- (7) Every member shall be liable for his subscription for the ensuing year unless his resignation has been tendered in writing to the Secretary on or before 30th September.
- (8) Members may compound their subscriptions and become Life Members on payment of the following fees:—Age up to and including 50 years, £7 7 0; age over 50 years, £5 5 0, or the equivalent in other currencies as may be fixed by the Committee. The number of Life Subscriptions accepted shall be subject to such limits as the Committee may decide from time to time.
- HONORARY LIFE MEMBERS.** (9) Individuals of outstanding merit may be elected Honorary Life Members of the Society by the Committee for reasons of exceptional service in the field of British North American Philately. Honorary Life Members shall have all the privileges of Members, except that they shall have no vote in the affairs of the Society.

- FELLOWS. (10) Members may be elected Fellows of the Society by a majority of two-thirds of those present at a meeting of the Committee. No member shall be so elected except on the recommendation of the Fellowship Sub-Committee in accordance with the separate rules governing the award.
- OFFICERS. (11) The officers of the Society to be elected by the Society in Annual General Meeting shall be:—
- (a) A President, who shall hold office for one year and shall not be eligible for re-election for one year thereafter.
 - (b) Three Vice-Presidents, who shall hold office for three years, and of whom the senior shall retire each year and shall not be eligible for re-election for one year. One Vice-President shall be chosen from members resident in Scotland, one from members resident in the North of England, and one from members resident in the South of England.
 - (c) A Secretary.
 - (d) A Treasurer.
- The Secretary and Treasurer shall hold office for one year and shall be eligible for re-election. All officers shall serve in an honorary capacity.
- (12) The President shall have power to fill any vacancy occurring among the officers. The appointee shall hold office for the remainder of the term of his predecessor and shall be eligible for re-election.
- (13) The Committee shall appoint a Librarian, an Editor of Maple Leaves and a Packet Secretary, and may make such other appointments as it shall think necessary from time to time. These appointments shall be at the discretion of the Committee.
- MANAGEMENT. (14) The Management of the Society shall be vested in a Committee composed of:—
- (a) The Officers of the Society.
 - (b) The immediate Past President (ex officio).
 - (c) The Founder President (ex officio).
 - (d) The Editor of Maple Leaves.
 - (e) The Packet Secretary.
 - (f) The Librarian.
 - (g) Nine members elected by the Annual General Meeting, three to represent each of Scotland, the North of England and the South of England, of whom the senior representative of each region shall retire each year and shall be eligible for re-election.
- The President, whom failing the senior Vice-President present shall be chairman. Six members present in person or by proxy of whom the President or a Vice-President shall be one, shall form a quorum. The Chairman shall have a second or casting vote. Seven days' notice of meetings of Committee shall be sent to all members along with an Agenda of the business. Any member of the Committee may appoint another member of Committee as a general or specific proxy for the meeting.
- NOMINATION AND ELECTION. (15) Nominations of officers and members of the Committee for election at the Annual General Meeting shall be made in writing by two members of the Society to the Secretary not later than three months prior to the meeting and shall be published in Maple Leaves in an issue previous to the meeting. Failing receipt or acceptance of nominations the Annual General Meeting shall make its own appointments.
- ADMINISTRATION. (16) The Financial Year of the Society shall commence on

1st October in each year. Officers shall take office at that date or at the close of the Convention for the year if held later.

- (17) The Annual General Meeting shall be held not earlier than nine months nor later than fifteen months after the preceding Annual General Meeting. The President or, in his absence, the Senior Vice-President, shall preside and shall have a second or casting vote. At least two months' notice of the date, time and place of the meeting shall be given by an official notice in Maple Leaves.
 - (18) Every member entitled to attend and vote at the Annual General Meeting shall be entitled to appoint another member as a general or specific proxy. Instruments appointing proxies must be lodged with the Secretary before the commencement of the meeting.
 - (19) Maple Leaves shall be the official organ of the Society. Publication of a notice in Maple Leaves shall be deemed to be sufficient intimation to all members.
 - (20) The Annual General Meeting shall appoint two members to audit the Annual Accounts, which shall thereafter be published in Maple Leaves.
 - (21) The treasurer shall maintain an account in the name of the Society with a Bank approved by the President. All uninvested funds of the Society which are under the Treasurer's control shall be deposited in this account. Any investments shall be held in the names of two Trustees, who shall be appointed by the Annual General Meeting and shall hold office for a period of five years, or for such shorter period as they may remain members and who shall be eligible for re-election. The Treasurer shall be required to take out a bond of fidelity insurance for such amount as the Committee may decide, the premium being payable by the Society.
- MISCELLANEOUS.
- (22) Regional Groups may, subject to the approval of the Committee, be formed to carry out the objects of the Society, such groups to be self-supporting. Each group shall appoint a Contact Member to maintain liaison with the Society.
 - (23) Study Groups for research in particular branches of British North American Philately shall be encouraged. Each such group shall appoint its own Secretary. The Committee shall have power to contribute towards the reasonable expenses of such Study Groups. The findings of Study Groups receiving such contributions shall not be published otherwise than in Maple Leaves without the consent of the Committee.
 - (24) The Committee shall have the right to suspend any member for a definite period from his rights and privileges in the Society or to expel him without cause assigned.
 - (25) In construing these Rules, the dividing line between the North and South of England shall be a line from Gloucester to the Wash. Wales shall be included with the North of England and Ireland with Scotland.
 - (26) Amendments to these rules shall only be made by a majority of two-thirds of those voting in person or by proxy at the Annual General Meeting. Notice of proposed amendments shall be sent to the Secretary not less than three months prior to the Annual General Meeting and published in Maple Leaves in an issue previous to the meeting.
 - (27) The Committee shall be the sole authority for the interpretation of these rules and the decision of the Committee thereon shall be final.

RULES GOVERNING THE AWARD OF FELLOWSHIP

1. Members of the Society may be elected as Fellows
 - (a) For outstanding research in the Postal History and/or Philately of British North America, or
 - (b) For outstanding services in the advancement of the interests of the Society.No Officer shall be elected a Fellow under head (b) while holding office in the Society.
2. Nominations for the Award shall be made to the Secretary by two members of the Society on a form to be obtained from the Secretary and shall be submitted at least two months prior to the Annual General Meeting.
3. All Nominations shall be passed by the Secretary for scrutiny to a Fellowship Sub-Committee to be nominated by the President consisting of three Fellows who have held office of President.
4. The Fellowship Sub-Committee may
 - (a) Recommend the nomination to the Committee of the Society.
 - (b) Reject the nomination.
 - (c) Withhold the nomination until such time as they consider it acceptable.
5. Nominees recommended to the Committee may be elected as Fellows by a majority of two-thirds of those present at a Committee meeting.
6. The names of nominees rejected by the Fellowship Sub-Committee may not be re-submitted for the Award for a period of three years.
7. All communications relating to Nominations for the Award of Fellowship shall be strictly confidential.

Rules Governing the Award of the Founders' Trophy

- 1.—The Trophy shall be awarded only to members of the Society. It will be held by the winner for one year.
- 2.—The Trophy will be awarded for work considered by the Judging Committee to be the best subject of ORIGINAL or INTENSIVE research in any branch of British North American Philately.
- 3.—The Judging Committee will comprise the President, the Immediate Past President, and Fellows of the Society.
- 4.—A quorum of this Committee shall be four, and the Committee's decision will be final.
- 5.—Throughout these Rules the word "Committee" shall mean the Judging Committee.
- 6.—The Committee may withhold the Trophy in any year when they feel the intended standard of original or intensive research has not been reached.
- 7.—The Committee may make the award in any year for outstanding research in previous years, providing the member concerned is still alive.
- 8.—Any winner of the award will understand his subject of research will be made available for its initial publication in the Society's Journal, for the benefit of all members.
- 9.—Nominations for the award, proposed and seconded, may be sent in through the Secretary, or brought up by the Committee themselves.
- 10.—All nominations, and discussion in Committee, will be treated as strictly confidential.

Rules Governing the Award of the Stanley Godden Trophy

To be awarded annually at the Convention for the most meritorious Exhibit of Classic Issues.

Canada 1851 to 1897 (end of the 'Small Cents' series).
Newfoundland 1857 to 1897 (up to S.G. 65a).
New Brunswick, Nova Scotia.
British Columbia and Vancouver Island.
Prince Edward Island.

- 1.—Amateur collectors only are eligible to compete.
- 2.—The Trophy to be held by the winner for one year.
- 3.—A previous winner is not eligible to win the trophy until three years have elapsed.
- 4.—Entries must not exceed the maximum of 12 sheets.
- 5.—In making the award consideration will be given to Philatelic knowledge, presentation, condition and interest.

N.B.—It is impracticable to send the Trophy out of Great Britain. If won by an overseas member, a special Diploma will be awarded and the winners name engraved on the Trophy.

Rules Governing the Award of the "Bunny" Cup

To be awarded annually for the most meritorious Exhibit of issues of Canada or Newfoundland after 1897. All other conditions are the same as those for the Stanley Godden Trophy.

Rules Governing the Award of the "Admiral" Cup

To be awarded annually for the most meritorious exhibit of "The Admiral Issues" 1912-27, with emphasis on original research. Other conditions as for Stanley Godden Trophy.

EXCHANGE PACKET GENERAL RULES

1. Booklets of stamps, covers, etc., may be sent to the Packet Secretary at any time.
2. Only B.N.A. material can be accepted for circulation.
3. The Secretary reserves the right to refuse any undesirable material without assigning any reason.
4. Stamps must be affixed to the sheets by means of hinges on one side of the sheet only, using standard booklets.
5. Stamps must be priced net, with the price plainly marked in ink above the stamps. The use of ballpoint pens for this purpose should be avoided.
6. The Packet will circulate only to members resident in the British Isles and Eire.
7. No one under 21 years of age will be placed on the circulation lists.
8. Any change of address, or an absence from home for a period on holiday or for other reasons must be notified to the Packet Secretary at the earliest.
9. The Packet Secretary reserves the right to remove any member from the circulation list without assigning any reason.
10. The contributors head the circulation lists for Packets in which they have material.
11. Members purchasing stamps from the sheets must use a rubber stamp or sign their FULL NAME in ink on the space from which stamps have been removed. The use of initials only for this purpose should be avoided.
12. The number of books comprising the Packet should be checked against the number given on the Postal List sheet.
13. Books should be examined for unsigned spaces. Any unsigned spaces should be marked as such and the Packet Secretary notified. The prompt observance of this rule will greatly assist in tracing defaulters.
14. A Purchase Advice, along with the Certificate of posting, must be completed and returned promptly with remittance to the Packet Secretary. It is essential that this Advice and Certificate be sent whether purchases are made or not.
15. Credit transactions are not permitted, neither is it permissible for a member to set off his purchases against prospective sales.
16. All remittances sent to the Packet Secretary should be **MADE PAYABLE TO THE SOCIETY.**
17. Any remarks made relating to stamps must be signed by the writer.
18. Subject to week-end and public holiday delay, the Packet must be sent to the next member within 48 hours.
19. Members may, if they wish, send the Exchange Packet by ordinary post provided a certificate of posting, stating the destination of the Packet, is obtained at the time of posting—such certificate to be sent to the Secretary with the normal purchases advice slip. Failure on the part of any member to observe strictly this rule will render that member liable for any loss the Exchange Packet may sustain. Should delivery be made by hand, obtain a signature for the Packet.
20. Commission is charged on sales at the rate of 7½%, and deductions are made in respect of the share of Packet insurance on the full value of each book, and for poundage and return postage.
21. These rules are subject to alteration from time to time should the Exchange Packet Secretary deem it expedient.

OCTOBER, 1956.

ATTENTION IS PARTICULARLY DRAWN TO RULES 14 AND 19.

The Society cannot undertake to make any valuations of Members' Property.

The Society's Name may not be used as a Reference in Philatelic Dealings.

LOCAL GROUPS AND CONTACT MEMBERS

Local Study Groups exist in the following districts. Information regarding meetings may be had from the Contact Members listed below:—

GROUP	CONTACT MEMBER
Aberdeen and North Scotland	...
Edinburgh and East Scotland	... J. J. Bonar, 30 Greenhill Gardens, Edinburgh.
Kent and Sussex	... L. D. Carn, 138 Whitley Road, Eastbourne.
Lancashire and Cheshire	... Dr. R. Willan, Oak House, Shaw, Lancs.
Leicestershire	... J. H. Donne, Highfields, Stamford Road, Kirby Muxloe, Leicester.
London and Home Counties	... N. M. Clougher, 26 Craven Street, London, W.C.2.
Midlands	... Dr. C. Hollingsworth, 17 Mellish Road, Walsall, Staffs.
North-East England	... T. V. Roberts, Hill House, 7 Melbury Road, Newcastle-on-Tyne, 7.
Notts. and Derby	... D. A. Avery, 20 North Street, Beeston, Nottingham.
Northern Ireland	... J. M. Allen, L.L.B., 36 Antrim Road, Lisburn, N. Ireland.
South and S.-W. Counties	... David Fortnum, 5 Sunbury Court, Bourne Avenue, Bournemouth.
West of Scotland and Glasgow	... Col. D. McLellan, 30 Roston Road, Hillpark, Glasgow, S.3.
Yorkshire	... J. Hinchliffe, 9 Broadgate Cresc., Almondbury, Huddersfield.

OVERSEAS CONTACT MEMBERS

Canada: East—A. H. Christensen, F.C.P.S., P.O. Box 250, North Hatley P.O., Canada.

Prairie Provinces: W. O. Martindale, 459 Sprague St., Winnipeg 10, Canada.

West—R. J. Duncan, Box 118, Armstrong, B.C.

The following members are also Liaison Members to kindred Societies:—

A. H. Christensen, North Hatley—Liaison to Canadian Philatelic Society, Incorp., Canada.

R. J. Duncan, Armstrong, B.C.—Liaison to Brit. North America Phil. Society.

SPECIAL SUBJECT STUDY GROUPS

Subject	Secretary
New Brunswick and Nova Scotia	... H. L. Darnell, 54 Whitelands Avenue, Chorley Wood, Herts.
Newfoundland	... Dr. R. Willan, F.C.P.S., Oak House, Shaw, Lancs.
Pre-Cancels	... R. B. Hetherington, Beedings Cottage, Gay Street, Pulborough, Sussex.
Railway and T.P.O.s	... L. F. Gillam, 30 Brecklands, Broom, Rotherham, Yorks.
Slogan Postmarks	... A. Leonard Harris, 50 Victoria Road North, Southsea, Hants.
Small Cents.	... Col. Duncan McLellan, 30 Roston Road, Hillpark, Glasgow, S.3.

THE ROLL OF FELLOWS

1946—A. E. STEPHENSON.

1948—R. W. T. LEES JONES.

GERALD E. WELBURN.

1949—BRIG. M. A. STUDD.

1954—H. C. V. ADAMS (died 1st July, 1955).

ROBERT J. DUNCAN.

GEORGE C. MARLER.

- 1950—DAVID GARDNER.
J. C. CARTWRIGHT.
1951—FRED JARRETT.
DR. R. WILLAN.
1952—MISS B. LYNTHURST OGDEN.
FRED AITCHISON (died 30th
January, 1953).
1953—A. BRUCE AUCKLAND.
FRANK W. CAMPBELL.
STANLEY H. GODDEN.
- 1955—OSWALD A. FRASER.
1956—F. TOMLINSON.
W. E. LEA.
1957—H. BUCKLAND.
L. BARESH.
A. H. CHRISTENSEN.
1958—J. F. BIRD.
J. J. BONAR.
L. D. CARN.
1959—MRS. G. BARRATT.
N. A. ARGENTI.
G. B. HARPER.
1960—J. P. MACASKIE.

HONORARY LIFE MEMBERS

- 1954—FRED JARRETT. 1955—W. S. BOGGS.

THE ROLL OF PRESIDENTS

- Sept., 1946—A. E. STEPHENSON. Oct., 1955—J. J. BONAR.
May, 1950—R. W. T. LEES-JONES. Oct., 1956—Dr. R. WILLAN.
Sept., 1951—J. C. CARTWRIGHT. Oct., 1957—G. B. HARPER.
Sept., 1952—DAVID GARDNER. Oct., 1958—Col. D. McLELLAN.
Oct., 1953—WM. C. HINDE. Oct., 1959—J. P. MACASKIE.
Oct., 1954—LEO. BARESCH. Oct., 1960—S. H. GODDEN.

SECRETARIES

- 1946-9—ALBERT SMITH. 1956-1957—HEDLEY HOLLANDS.
1949-52—GEOFF. HARPER. 1957—Dr. CHARLES
1952-56—PHILIP MARSDEN. HOLLINGSWORTH.

CONVENTIONS

- 1947—PERTH. 1954—BUXTON.
1948—EDINBURGH. 1955—SELSDON PARK.
1949—EDINBURGH. 1956—STIRLING.
1950—LONDON RECEPTION. 1957—SCARBOROUGH.
1951—HARROGATE. 1958—EASTBOURNE.
1952—BOURNEMOUTH. 1959—EDINBURGH.
1953—GLASGOW. 1960—LLANDUDNO.

EXECUTIVE COMMITTEE

- President**—S. H. GODDEN, F.C.P.S., 72 Woodland Drive, Hove, Sussex.
Founder President—A. E. STEPHENSON, F.C.P.S.
Past President—J. P. MACASKIE, F.C.P.S.
Vice-Presidents—Sir GEORGE WILLIAMSON, Dr. C. W. HOLLINGSWORTH,
G. F. GEORGE.
Secretary—Dr. C. W. HOLLINGSWORTH, 17 Mellish Rd., Walsall, Staffs.
Treasurer—D. L. FORTNUM, 5 Sunbury Court, Bourne Avenue, Bournemouth.
Editor of Society Journal—JAMES E. WOODS, 2 Hengrave Rd., Honor Oak Park,
London, S.E.23.
Hon. Exchange Secretary—J. A. GRANT, 11 Gordon Rd., Edinburgh 12.
Convener of Study—G. WHITWORTH.
Publicity and Advertising Manager—THE EDITOR.
Convener Exhibits—S. H. GODDEN, F.C.P.S.
Convener Expertisation Committee—R. W. T. LEES-JONES, F.R.P.S.L., F.C.P.S.,
Merridale, Bank Hall Lane, Hale, Cheshire.
Librarian—R. S. B. GREENHILL, The Sheiling, Village Way, Little Chalfont,
Amersham, Bucks.

COMMITTEE MEMBERS, 1959-60

- South**—J. C. CARTWRIGHT, L. D. CARN, S. R. RUTTER.
North—J. F. BIRD, S. BRAYSHAY, G. WHITWORTH.
Scotland—J. J. BONAR, J. HANNAH, J. MILLAR ALLEN.

The first named in each region retires on September 30th, 1961.

Secretary to Handbook Committee—

LIST OF MEMBERS' NAMES AND ADDRESSES WITH KEY TO THEIR COLLECTING INTERESTS

<p>A. Airmails A.G. Airgraphs B. B.N.A. Provinces BL. Plate Blocks B.S. Booklet Stamps C. Canada (generally) CR. Canada 1851 CR2. Canada 1859 CL. Canada 1868 CS. Canada 1870 CQ. Canada 1897-1903 CE. Canada 1903-1912 CG. Canada 1912-1930 CGA. Canada 1930-1936 CGC. Canada 1936-1953 CGE. Canada 1953 et seq. D.C. Dated Copies FF. First Flights</p>	<p>M. Commemoratives M.O. Mint Only N. Newfoundland O. Official Stamps P. Postmarks P.A. Pre-Adhesives P.B. Paquebots P.C. Pre-Cancels P.E. Proofs and Essays PER. Perfins P.H. Postal History P.L. Philatelic Literature P.S. Postal Stationery R. Revenues S.C. Squared Circle Postmarks S.P. Slogan Postmarks U.O. Used Only V. Varieties</p>
--	---

No.	Name and Address	Key
-----	------------------	-----

A

403	ABERDEEN, Douglas A., 30 Westmead Road, Sutton, Surrey	CG.
797	ABRAHAM, C., "Christmay," Sixty Acres Road, Prestwood, Bucks.	C.
742	ADAMSON, Morris C., 11,159, 87th Ave., Edmonton, Alberta, Canada.	C.
49	AIKENS, Clifford, 111 Elmer Ave., Toronto, 8, Canada.	GCB., Ger., CZ
18	AITKEN, Major Hugh A. T., 10 Stanley Cohen House, Golden Lane, London, E.C.1.	CGA. to CGC.
422	ALLEN, J. Millar, L.L.B., 36 Antrim Road, Lisburn, Northern Ireland.	C.
974	ANDERSON, Carl A., 1120 12th St. East, Saskatoon, Sask., Canada.	C.P.S.C.
7	ANDERSON, John, M.B.E., F.S.P.S., F.A.P.S., 3 Polmuir Road, Aberdeen.	C.P.
716	ANDERSON, Robert B., Royal Bank Blds., Jedburgh, Roxburghshire.	CE.—CGC.
89	ANDERTON, Jack, 28 Hillcrest Road, Denholme, Bradford, Yorks.	C
1155	ANDREWS, A. C., 391 Strand, London, W.C.2.	C.
678	ANNING, Edmund James, "McAdam," Beaucroft Lane, Wimborne, Dorset.	C.
751	ARGENTI, Nicholas Andre, F.R.P.S.L., F.C.P.S., 88 St. James Street, London, S.W.1.	B.
1247	ARMSTRONG, R. J. P., Box 341 G.P.O., Brisbane, Qld., Australia.	C.
1257	ARONS, M. L., 204 Muriel St., Ithaca, N.Y., U.S.A.	PS.
775	ASHCROFT, John, 3 Queensway Close, Penwortham, Preston, Lancs.	C.
352	ASHWORTH, Mrs. Clara, 129 Grange Loan, Edinburgh.	C., PE.
576	ASPREY, A. R., 100 Albert Road, Morecambe, Lancs.	C.
1225	ASQUITH, L. G., M.B.E., 5 Hill Road, Carshalton, Surrey.	P.
1042	ATKINSON, F. B., 132 Rosedale Ave., Hamilton, Ont., Canada.	SP, PS, PC.
866	ATKINSON, F. G., 1215 Greene Avenue, Montreal 6, Canada.	B. C.
745	ATTENBORROW, C. C., 8 Farm Way, Worcester Park, Surrey.	C.
5	AUCKLAND, A. Bruce, M.A., F.C.P.S., F.S.P.H., Ythanraig, 70 Lanark Road West, Currie, Midlothian.	C., PA., PH.
951	AUGUST, Major John C. W., Oakdene, West Oakhill Park, Liverpool, 13, Lancs.	C.

B

121	AVERY, D. A., 20 North Street, Beeston, Notts.	C., P., PS.
750	BACK, David Eric, 307 Fulham Road, Chelsea, London, S.W.10.	C.
1274	BACKES, J. J., 274 Hazel St., Waterloo, Ont., Canada.	C.
1052	BACON, J. L., 62 Redesmere Park, Flixton, Manchester.	CS, CG, PC.
172	BAILEY, Anthony G., Oaklands Park, Newdigate, Surrey.	C.

- 733 BAIN, Rev. John S., 435 Fourth Street, Santa Rosa, Calif., U.S.A.
C., CG., BS., PH., 1898 Map.
- 1240 BANFIELD, Mrs. B., 13 Spottiswoode Rd., Edinburgh, 9.
667 BANFIELD, E. Arnold, Kings Castle, Oakville, Ont., Canada. C.
1099 BANNO, Dr. E. C., 676 Fraser St., Kamloops, B.C., Canada. C, P—CS, SC.
575 BARBOUR, J. G., 37 First Avenue, Chelmsford, Essex. C.
962 BARCHINO, J., P.O. Box 953, Brantford, Ont., Canada. C.
263 BARESCH, Leopold, F.R.P.S.L., F.C.P.S., 82 Baker Street, Weybridge,
Surrey. N., C., CL.
897 BARKER, B. Leslie, The Cottage, Fulbeck, Grantham, Lincs. CL—CS.
457 BARKER, J. A., 151 Gower Road, Swansea, Glams. C.
976 BARLOW, K., 1055 Ottawa Ave., W. Vancouver, B.C., Canada. C, P, PS, SP.
872 BARNA, Eugene, R. R., 2 Leamington, Ontario, Canada. C.
334 BARRATT, Mrs. Stanley, F.C.P.S., Ballynoe, Ardattin, Carlow, Ireland. N.
689 BARRATT, Major Stanley G. R., Ballynoe, Ardattin, Carlow, Ireland.
985 BARTLETT, B. H., 711 Braeview Rd., Louisville, Kentucky, U.S.A.
926 BARTLE, Vernon C., 54 Mostyn Street, Llandudno, N. Wales. C. B.
187 BARTON, G. E. C., Parkstone, Ward Avenue, Cowes, I.O.W. C., N.
1296 BARWISE, G. S., 290 Heathwood Rd., Llanishen, Cardiff, Glam.
979 BATES, A., 37 Ashfield Rd., Stoneygate, Leicester. C.
1152 BAVIN, A. E., 45 Meadway, Bush Hill Park, Enfield, Middlesex.
CG—CGE, P.
266 BAYLEY, Thomas G., 234 Lea Road, Wolverhampton, Staffs. C.
1009 BEALEY, E., 2341 W. Broadway, Vancouver, B.C., Canada. C, N.
1063 BEDWELL, S. F., Box 206, Salmon Arm, B.C., Canada. C, N, B, O, B.S.
1031 BEEBY, H. M., Box 161, Winnipeg, Canada. CR—CQ.
1054 BELL, L. M., Box 414, Saint John, N.B., Canada. C, N, B.
1208 BETTS, E. C., Jr., 4209 73rd Ave., Bellemead, Ayattsville, Md., U.S.A. C.
104 BETTS, Frederick E. M., Perham House, The Triangle, Ludgershall,
Andover, Hant. CS., CGC., P., PC., R.P.O.
308 BEVERLEY, George, 14 Holburn Road, Aberdeen. C.
993 BIELBY, J. E., "Ailsa Craig," 194 Skipton Rd., Harrogate, Yorks. C, N.
1130 BIERMANN, H., 94 Princess St., Saint John, N.B., Canada. C, MO.
903 BILLIG, Fritz, 55 West 42nd St., New York, N.Y. 36, U.S.A. C.
913 BILESKI, Kasimir, Station B, Winnipeg, Canada. C.
236 BINKS, B. C., Capt., 1574 Angus Drive, Vancouver 9, B.C., Canada. C.N.B.
747 BINNS, Harold G., 14 Mauldeth Road, Withington, Manchester, 20, Lancs.
C, CR, CR2, CL.
1316 BIRD, E. M., 81 Fonthill Rd., Aberdeen. C.
184 BIRD, John F., F.C.P.S., Gate House, Garleigh Rd., Rothbury, Morpeth,
Northumberland. C., B.
338 BISHOPP, Peter, 5 Albion Road, Tunbridge Wells, Kent. C.
207 BISSET, John F., "Holmglen," Busby Rd., Carmunnoch, Lanarkshire. C.
1184 BLACK, E. C., 1726 Western Parkway, Vancouver 8, B.C., Canada. C, PL.
596 BLEASE, H. F., 5 Victoria Road, Trowbridge, Wilts. C.B.N.
528 BLOIS, E. M., 4 Cartaret Street, Halifax, Nova Scotia, Canada. C.B.
746 BOASE, George R., 17 Crown Lane Gdns., Streatham, London, S.W.16. C.N.
777 BOGGS, Winthrop S., 180 Prospect Street, East Orange, N.J., U.S.A.
341 BONAR, John J., F.C.P.S., 30 Greenhill Gardens, Edinburgh. C.R.—CE., PH.
871 BOND, Clifford C., P.O. Box 335, Station B, Montreal, Canada. C.
830 BORNEMANN CURT, Berlin-Charl, 5 Kaiserdamm, 111, Germany.
C. A. A.G.
366 BOSWORTH, Wm. N., 70 Iddesleigh Road, Bournemouth, Hants. C., N.
1087 BOURGIE, L., 10451 Blvd., St. Michel, Montreal 12, Canada. C.
1164 BOWELL, D. J., 27 Franks Ave., New Malden, Surrey. C.
741 BOWLEY, Henry S., 10039 87th Ave., Edmonton, Alberta, Canada. C.O.N.
762 BOWMAN, Carl Frank, "Trees," Victoria Road, Ferndown, Dorset. C.N.B.
989 BOYD, N., M.D., 1175 Kildare Rd., Windsor, Ont., Canada. CR to CO.
899 BRASSLER, Norman, 129 Market St., Paterson, N.J., U.S.A. CR2—CO. PSC.
552 BRAYSHAY, S., 18 Palace Road, Ripon, Yorks. C.
937 BRERETON-STILES, C., Somerset West Golf Club, Somerset West,
C.P., S. Africa. C.
227 BREMNER, A. A., 1 Firpark Villas, Lundin Links, Fife. C.N.
1144 BRETON, Mrs. A., 11 Garipey Block, 10004 Jasper Ave., Edmonton,
Alta, Canada. P, C, Per.

- 274 BREWER, J. W., 'Downview', The Ridgeway, Southborough,
Tunbridge Wells, Kent. C, N, B.
- 893 BREWER, Walter M., 3219 Homer St., San Diego 6, Calif., U.S.A.
C. PH. PS. PA. O. C.
- 144 BRICKER, Forbes, Listowel, Ontario, Canada. C.
- 1197 BRINDLE, K. S., 82 Palace Road, Tulse Hill, London, S.W.2. C, CS, CG, UO.
- 1074 BRISBY, G. B., 17 Staff Lines, Shorncliffe, Kent. C, A, FF.
- 1187 BRITNEY, Mrs. E. A., 322-77th St., North Bergen, N.J., U.S.A. C, A, FF.
- 426 BROCK, Edgar J. F., 7 Lower Stone Close, Frampton Cotterel, nr. Bristol. C.
- 713 BROCK, Rr. Adml. P. W., C.B., D.S.O., United Services Club, Pall Mall,
S.W.1. CR—CGC.O.
- 793 BROOKS, G. Scott, Apt. 7, 2150 Tupper Street, Montreal 25, Province
of Quebec, Canada. C.N.B.
- 383 BROWN, F. L. R., Stone Farm, Stone Street, Stelling, Canterbury, Kent.
C., B.
- 148 BROWN, Arthur B. Vincent, 56 Park Lane, Thatcham, Berks. C., N.
- 550 BROWN, H. H., Shoreham, Church Road, Southbourne, Bournemouth,
Hants. C.CR—C.Q. B.N.
- 1234 BROWN, J. B., 74 Priory Lane, Dunfermline, Fife.
- 914 BROWN, Paul L., 82 King St. East, Brockville, Ontario, Canada. DC. P.
- 744 BRUMWELL, J. C. H., Cambridge House, 131-139 Camberwell Road,
London, S.E.5. CL—CGE, N, P.C, U.O.
- 931 BUCHANAN, W. O., 243 Russell Hill Rd., Toronto 7, Ontario, Canada.
P. PS. PER. C.
- 861 BUCK, L. Gordon, 4811 Wilson Avenue, Montreal, P.O., Canada. C.
- 26 BUCKLAND, Herbert, F.C.P.S., Port Perry, Ontario, Canada. C., BG., Nor.
- 1306 BULGIN, R. V., Bulgin and Son Ltd., Ross-on-Wye, Herefordshire.
- 844 BURGESS, Robert Leonard, 3 Radbourne Rd., Balham, S.W.12. C.P.C.
- 796 BURNS, Orland G., M.D., Wing Bldg., Kamloops, Brit. Columbia,
Canada. C.O. (Plate blocks.)
- 505 BURR, R., 778 Valour Road, Winnipeg, Man., Canada. C.P.L.
- 384 BURROUGHS, Frederick J., 147 Kensington Road, Portsmouth, Hants.
C., BS. P.
- 1091 BURTON, J. D., "Lyham," Cleveland Cresc., North Shields. C.
- 1298 BUSH, J. A., Beathwaite, Levens, Kendal, Westmorland. C.
- 682 BUSH, Raymond W., 19 Birchfield Ave., Beacon Pk., Plymouth, Devon.
CE.—CGC. V.
- 1145 BUSSEY, Mrs. G. E., 76 Welsford Rd., Eaton Rise, Norwich, Norfolk. C, N.
- 527 BLYTH, J. G., 6 St. Vincent Avenue, Blackpool, Lancs. C.

C

- 361 CALDER, S. C., White Cottage, Longhurst Lane, Mellor, Cheshire.
- 888 CALDWELL, Norman Denew, Durwards, Tamarisk Way, Ferring.
- 325 CALNAN, Noel, F.R.P.S.L., Bramber, Chalkwell Esplanade,
Westcliffe-on-Sea, Essex. C., P.
- 179 CAMPBELL, Frank W., F.C.P.S., 1132 Pinehurst, Royal Oak, Michigan,
U.S.A. C. CG. PA. PH.
- 497 CANHAM, H. E., 163 Rosseau Rd., Hamilton, Ont., Canada. C.
- 1123 CARLESS, H. A., 78 Park Road, Burgess Hill, Sussex. C, N, B.
- 167 CARN, L. Dorland, F.C.P.S., 138 Whitley Road, Eastbourne, Sussex. C., CS.
- 870 CARR, C. J. T., 4 Mount Road, Dover, Kent. PER. P. PC.
- 982 CARSTAIRS, W. M., 19 Baghdad Rd., Bulford, Wilts. CL—CS, B, P.
- 1023 CARTER, F. C., Bedford R.R., 2 Halifax County, N.S., Canada. B.
- 883 CARTER, Walter P., 47 Risebrough Ave., Willowdale, Ontario, Canada. C.
- 99 CARTWRIGHT, J. C., F.C.P.S., 53 Madeira Park, Tunbridge Wells, Kent. C.
- 752 CATER, James, 21 Auckland Road, London, S.E.19.
- 842 CATTERALL, Frederick W., 518 6th St., Saskatoon, Sask., Canada.
C. R. A. O.
- 1207 CAUDWELL, N. S., 126 Crescent Rd., Toronto 5, Canada. BL.
- 1114 CHABOT, P. R., 6102 45th Ave., Rosemont 36, Montreal, Canada. C, B.
- 1300 CHADBOURNE, W. W., 104 Hilltop Rd., Hilltop Manor, Wilmington,
Del, U.S.A.
- 435 CHAMBERS, J., Drawer 1532, Merritt, B.C., Canada. C., N. B.
- 902 CHAMBERS, Joseph E., 165 Middleton Rd., Banbury, Oxon. C.

- 843 CHANDLER, Charles Massey, 114 Armour Blvd., Downsview, Ontario,
Canada. CR—CE. P. PH.
- 1246 CHAPDELAINE, Maj. H., E.D., 270 Ave de la Concorde,
St. Hyacinthe, Que., Canada. C.
- 671 CHAPMAN, Maj. G. A. E., 387 Mariposa Ave., Rockcliffe, Ottawa 2, Canada. CS.
- 1040 CHARRON, J. J., 537 Miles St., Greenfield Park, Que., Canada. CS.
- 980 CHASMER, D. E., 277 Hampton Rd., Ilford, Essex. C, BS, O, P.C, PB., P.
- 232 CHELLEW, Edmund, 70 Chevening Road, Kensal Rise, London, N.W.6.
C., P.
- 661 CHILDS, Miss Marjorie, 149 Halifax Old Road, Huddersfield, Yorks. C.
- 169 CHRISTENSEN, A. H., F.C.P.S., P.O. Box 250, North Hatley, P.Q.,
Canada. C.
- 1183 CHRISTENSEN, E. J., 11612—94 Street, Edmonton, Alta, Canada. C.
- 1166 CHRISTIANSON, W. D., 124 Gladstone Ave., Hamilton, Ont., Canada.
C, PS.
- 729 CHUDLEY, Frederick J., 44 North St., Exeter, Devon. C.G.B., Aden.
- 1224 CLARK, E. A., 2957, No. Brighton St., Burbank, Calif., U.S.A. SC. PS. C.
- 1136 CLEGHORN, J. R., 220 Prado Place, Riverside, Ont., Canada. C.
- 1170 CLEM, Lt/Col. W. A. J., Q.M. Subs School, QMTC, Fort Lee, VA.,
U.S.A. BL, P, E.
- 1016 CLEMENTS, E. H., 16 South Down Rd., Shoreham-by-Sea, Sussex. C.
- 1295 CLIST, L. F., Berkeley, Vicarage Road, Chelmsford, Essex.
- 802 CLOUGH, Thomas Smith, 687 Plessey Rd., Newsham, Blyth,
Northumberland. C. MO.
- 40 CLOUGHER, Nugent M., 26 Craven Street, London, W.C.2. C. P.A. PH.
- 458 CLOUGHER, Mrs. N. M., c/o 26 Craven Street, London, W.C.2. C., N., B.
- 1305 CLOW, F. J., 45 Osborne St., Bletchley, Bucks. PA, CR2—CS.
- 631 COBB, F. P., The Old Farm, Badsey, Evesham, Worcs. C.
- 1178 COFFIN, F. W., 6137 Oak St., Vancouver 13, B.C., Canada. S, P.
- 734 COHEN, Louis Charles, "Maldwyn," 11 Llwyn-y-Grant Rd., Penylan,
Cardiff. C.
- 72 COHEN, Stanley F., 51 Westfield Road, Egbaston, Birmingham, 15,
Warks. C.CQ.
- 953 COLE, Daniel G., 29 Crosby Rd., St. Annes, Lancs. PC. PS. CS. C.
- 708 COLE, James Edward, 20 Clematis St., Westway, London, W.12. CL.—CGC.
- 1258 COLLINGWOOD, Dr. W. P., Placentia, P.B., Newfoundland. C, N.
- 1036 COLLINS, S. G., Pentland, Birkenhead Rd., Hoylake, Cheshire.
CR to CQ P.C.
- 427 COLTMAN, James, "Belvedere," Thropton, Morpeth, Northumberland. C.
- 486 COLTON, C. H., Blackhill Cottage, Esher, Surrey. C., N., B.
- 328 COMBE, Andrew, 24 Orchard Drive, Edinburgh. C.
- 739 COMBES, E., 21 St. Aubyn's Road, Lowestoft, Suffolk. C.U.O.
- 860 COOK, Alfred P., Coy Glen Road, Ithaca, New York, U.S.A. C. N. BS.
- 475 COOKE, J. R., Stamp Collectors' Exchange Club, Arkona, Ontario,
Canada. C., B., N., P.L.
- 459 COOKE, Dr. Lorna, Westhay, Mount Avenue, Hutton, Brentwood, Essex.
- 737 COPP, D. A., 10639 146th St., Edmonton, Alberta, Canada. CR—CQ.P.P.E.
- 1065 COSTAIN, J. K., 18 Haffenden Rd., Lincoln. C, RPO, BC.
- 1056 COWLES, R. A., 1595 Yosemite Blvd., Birmingham, Michigan, U.S.A. SP, P.
- 625 COX, D. G., P.O. Box 18, Tighe's Hill, Newcastle, N.S.W., Australia. C.A.
- 448 COX, Theodore, 289 Broad Street, Salford, 6, Lancs. C., N., B.
- 1253 CRANE, D., R.R.I., Kelowna, B.C., Canada. CR2—C.S.
- 1037 CREED, E. G., 8 Embling Rd., Malvern, S.E.4, Vic., Australia. C, N.
- 1096 CRAWFORD, D. A., 2082a Queen St. E., Toronto 8, Ont., Canada. SC.
- 530 CROMWELL, R., 147 High Street, Tewkesbury, Glos. C.
- 454 CROSBY, Louis C., Banff, Alberta, Canada. B., CS.
- 997 CROUSE, W. V., Box 762, Amherst Burg., Ont., Canada. C.
- 686 CULHANE, James T., 119 Montgomery Avenue, Coleston, Norristown,
Pa., U.S.A. C.N.

D

- 216 DAGGETT, Harry M., 4078 West 37th Ave., Vancouver 13, B.C.,
Canada. C., N., B., PL.
- 1262 DALEY, R. C., 96 Kerr St., Mayfield 2N, N.S.W., Australia.
- 1260 DANE, Lt/Cdr., P. P. R., R.N., 128 Grainger St., Newcastle-on-Tyne 1. C.

- 807 DANKIN, Mark, 3 Tenterden Road, Botany, New South Wales,
Australia. C.V.
- 613 DARNELL, H. L., 54 Whitelands Ave., Chorley Wood, Herts. B.N.
- 723 DAVENPORT, Les. A., 230 Lonsmount Dr., Toronto 10, Ont., Canada.
C.N.B.
- 1156 DAVEY, W. J., Milnes Landing, Vancouver Island, B.C., Canada. SP.
- 1202 DAVISON, Mrs. M. O., 833 Valley Rd. Place, Birmingham, 8, Alabama,
U.S.A. C, N, B.
- 1196 DAWE, Miss H., Vancouver Public Library, Vancouver 1, B.C., Canada.
- 1275 DAWSON, A., 90 Park Row S, Hamilton, Ont., Canada. C.
- 1250 DAY, Dr. K. M., 3515 Fifth Ave., Pittsburgh 13, PA, U.S.A. CS.
- 272 DAY, Lloyd R., 22 Lorne St., Huntsville, Ont., Canada.
- 850 DEAN, N., 222 Goldhawk Rd., London, W.12.
- 1232 DE LISLE, I., 1891 University Ave. West., Windsor, Ont., Canada. C.
- 1140 DENT, G., 42 Vavasour St., St. James, Winnipeg, Canada. C.
- 624 DENT, G. W., The Vinery, Bury St. Edmunds, Suffolk. C.CR—CL.P.
- 1299 DENTON, B. K., 264 Yamate-Cho, Naka-Ku, Yokohama, Japan. CR—CS.
- 1270 DEW, E. H., 24 Lampton Park Rd., Hounslow, Middx. C.
- 541 DEWEY, G. F., Rev., 5124 Sherbrooke Street W., Montreal, 28, Quebec.
C.C.S.
- 135 De VOLPI, C. P., 109 Sunnyside Ave., Westmount, Montreal 6, Canada. C.
- 78 DICK, W. P., 89 Oban Drive, Glasgow, N.W. C.
- 1308 DICKSON, R. G. B., Q.C., 1034 Wellington Cresc., Winnipeg, Man., Canada.
C.
- 1223 DILWORTH, H. M., 4744 West 7th Ave., Vancouver 8, Canada. CS, SC.
- 794 DISTIN, Ronald Cecil, 128 Boundary Rd., Wallington, Surrey. C.
- 1217 DOBBIE, G. H., 45 Blair Rd., Galt, Ont., Canada.
- 820 DONNE, James Harold, "Highfields," Stamford Road, Kirby Muxloe,
Leicester. PS, CG.
- 1276 DOMINIK, L. P., 568 Romaine, Peterboro, Ont., Canada. C.
- 901 DORIAN, Miss Ann, 57 Teignmouth Road, London, N.W.2. CG.B.
- 1176 DOWNING, L. L., 10 Crescent Rd., Concord, Mass., U.S.A. CR—CS.
- 955 DRAKE, A. J., 32 Western Rd., East Finchley, London, N.2. C.
- 1013 DRAKE, E. N., 136a Walmer Rd., Toronto 4, Canada. C.
- 1071 DREW-SMITH, G., 28 Wentworth Ave., Galt, Ont., Canada. C, B, PC.
- 980 D'SOUZA, B. B. J., P.W.D., P.O. Box 10, Entebbe, Uganda. C.
- 94 DUNCAN, Robert J., F.C.P.S., Box 118, Armstrong, Brit. Columbia, Canada.
C, P., P.L.
- 1252 DUNCAN, J. J., Box 118, Armstrong B.C., Canada. C.
- 1173 DUVAN, J., 126 Logan St., St. Lambert, Montreal 23, Canada. C.
- 1313 DYKES, R. O., 11815—76 Ave., Edmonton, Alta, Canada. C.

E

- 305 EASTON, Daniel E. F., M.D., P.O. Box 233, Kentfield, Marin Co.,
California, U.S.A. C.N.
- 831 EATO, Henry Proctor, 179 Manthorpe Road, Grantham, Lincs. C. P.C.
- 1256 EATOCK, A. J., 43 Normandy Rd., Hamilton, Ont., Canada. C.
- 188 EATON, F. E., Lt.-Col., 3160 West 57th Ave., Vancouver 13, B.C.,
Canada. C, N, B.
- 106 EDMUNDS, G. A., "Cartrefle," 17 Anscombe Close, West Worthing,
Sussex. C, N, B., P.H.
- 755 EDMONDS, Henry A., Railway Cottages, Berwick Sta., Nr. Polegate,
Sussex. C.P.C.
- 1291 ELLIOTT, T. B., 188 Melbourne Ave., Toronto 12, Canada. SC, CL.
- 1022 ELLIS, J. P. M., Orley Farm School, Harrow-on-the-Hill, Middx. C.
- 421 ELSTON, T. Frank, Trent Villa, Trent Lock, Long Eaton, Notts. C, N, B.
- 1000 ERBACH, W., 140 Blucher St., Kitchener, Ont., Canada. C.
- 1271 EVEQUOZ, A., 3861 Barclay, Apt. S, Montreal, P.Q., Canada. C, P.
- 373 EVEREST, Dr. Arthur E., Church Bank, Kingston, Herefordshire. C.

F

- 593 FAIRBANKS, G. A., 54 Oakland Avenue, Montreal, Quebec, Canada.
C.R1, CR2, V.P.B., CL.
- 33 FAIRWEATHER, Frank H., 4 Struan Place, Newport, Fife. C.

- 50 FALCONER, W. L., Menie Park, Balmedie, Aberdeenshire. C., P.S., S.P.
 1186 FALKEN, Dr. S. R., Sr., 500 E. 4th St., Boyertown, PA., U.S.A. CR—CQ, P.L.
 1068 FARMERY, R. S., "Stanns," Pinfold Lane, Scarthe, Grimsby. PC, P, RPO.
 218 FARR, E. D., 33 Wheatcroft Road, Allerton, Liverpool. N., C., B.
 1221 FARROW, Miss D. H., "Westerly," Fairhaven Ave., West Mersea, Essex. P.
 1057 FEATHERSTONE, Capt. R., M.B.E., Box 248, Halifax, N.S., Canada. C, N, B.
 1160 FEERO, F. W., 343 Prince St., Lancaster, N.B., Canada. C.
 757 FENNING, J. O. D., 295 Cherry Hinton Rd., Cambridge. C.
 1112 FERGUSON, Mrs. W. P., 24 Granville Rd., Hampstead, P.Q., Canada. C.
 228 FIELD, David, 7 Vigo Street, London, W.1. C., N., B.
 259 FIELD, Francis J., Richmond Road, Sutton Coldfield, Warcks. A.
 690 FINDLAY, A. c/o P. M. Young Ltd., 30 Cowcaddens Street, Glasgow, C.2.
 1134 FISHER-JONES, G., Box K763, GPO Perth, W. Australia. C.
 1025 FORFAR, K., 2966 N. 41st Street, Milwaukee 10, Wis., U.S.A. S.P.
 936 FORRESTER, Reginald A. C., 25 Royal Crescent, Bath, Somerset. C.
 675 FORTNUM, David Leslie, 5 Sunbury Court, Bourne Ave., Bournemouth, Hants. C.B.N.
 335 FOSTER, G. E., 640 Perry Street, Trenton, New Jersey, U.S.A. C.L., C.S., B., P.E.
 456 FOWLES, George, 2 Cordwell Villa, Wem, Shropshire. C.
 451 FOX, Norman, 24 East St., Wareham, Dorset. C., N.
 839 FRANK, J. R., 101 Conrad St., Florida North, Transvaal, South Africa. C.
 881 FRASCH, Z., 9 Normandy Blvd., Toronto, Ont., Canada. C.S.C.
 1310 FRASER, A. G. J., 2426 Assinboine Cresc., St. James, Man., Canada. C, BL.
 215 FRASER, Douglas G., 5 Perth Street, Ottawa, 3, Canada. C., N.
 6 FRASER, O. A., F.C.P.S., Fonthill Road, Aberdeen. C., N., PA., A.
 696 FRESHWATER, William L., The Old Parsonage, Frilsham, Hermitage, Newbury, Berks. Siam.
 1209 FUNSTON, D., 24 Belsize Cresc., Hampstead, London, N.W.3. C, SP, O, A.

G

- 151 GABBITAS, Arnold, 56 Blair Athol Rd., Banner Cross, Sheffield, 11. C., P.A., P.H., P.
 430 GAMMIE, James I., "Highlands," 156 Pinner Road, Watford Heath, Herts. C., N., B.
 120 GARDEN, George D., 14 Church Road, Giffnock, Renfrewshire. C., N.
 582 GARDNER, Daniel, 56 Grant Street, Helensburgh, Dumbartonshire. C.
 43 GARDNER, David, M.B.E., F.C.P.S., Meikle Finny, Gartocharn, By Alexandria, Dumbartonshire. C., N., P.
 1210 GARRAWAY, F. C., 137 Nassau Ave., Freeport, New York, U.S.A. C.
 162 GARRETT, C. B. D., P.O. Box 8, Horseshoe Bay, B.C., Canada. C.Q., C.E., S.P., R., Brit. Col.
 702 GATES, H., 189-04 64th Ave., Fresh Meadows, 65 New York, U.S.A. C., CR.—CQ., P.E., P.H.
 1010 GATES, Mrs. M. E. M., 107 Stanhope St., W. Footscray, W.12, Vic., Australia. N.
 821 GEE-HEATON, Peter, Weald Dene, Weald Way, Caterham, Surrey. CGC.—CGE.
 1105 GELDERT, Dr. G. M., 516 Kenwood Ave., Ottawa 3, Canada. C.
 474 GELINAS, Major J. A., M.C., U.S. Army Hospital, Camp Leroy Johnson, New Orleans 40, U.S.A. CS.
 1033 GEORGE, C. H., 23 Boulevard Montparnasse, Paris 6, France. C, N, M.O.
 471 GEORGE, Edward, 59 Campsie Gardens, Clarkston, Glasgow. C., N.
 510 GEORGE, G. F., 40 Warwick Road, Coulsdon, Surrey. C.
 855 GERVERS, Brig. F. R. S., Sloane House, Littleworth Ave., Esher, Surrey. C.
 970 GIBBS, Dr. J., University, Edmund St., Birmingham, 3. C.
 125 GILL, Evan R., F.R.P.S.L., 11 Cheltenham Avenue, Liverpool, 17. C., P.
 568 GILLAM, L. F., 66 East Bawtry Rd., Rotherham, Yorks. C., P.C., RPO.
 833 GILES, Wilfred Venning, 44 South Croft, Henleaze, Bristol. C.
 356 GILLESPIE, John W. A., 40 Rubislaw Park Crescent, Aberdeen. C., N.
 231 GINN, Arthur E. F., 115 Moorgate, London, E.C.2. C., N., B.
 1233 GIRARD, A. A., 3175 Randolph St., Windsor, Ont., Canada. C.

- 22 GODDEN, Stanley H., F.C.P.S., 72 Woodland Drive, Hove, Sussex.
C., CR to C.S., B.
- 869 GOLDSMITH, Milton, 4331 Beaconsfield Avenue, N.D.G., Montreal,
Canada. C.
- 859 GOODMAN, K. G. W., 174 High Street, Henley-in-Arden, Warks. C. PC.
- 1095 GORDON, P. C., 158 South St., Halifax, N.S., Canada. CR—CQ, PS.
- 710 GOODY, Harry, 26 Carrwood Rd., Bramhall, Cheshire. N.
- 990 GOLDMAN, L., 2264 Gladstone Ave., Windsor, Ont., Canada. C, V.
- 714 GOWERS, Herbert H., 17 Turketel Rd., Folkestone, Kent. C.V.
- 817 GRANT, James A., 11 Gordon Road, Edinburgh, 12. C.
- 586 GRAY, W. B. C., Church Close, Church Lane, Oakley, Beds. C, B.
- 239 GREENE, Vincent G., 77 Victoria St., Toronto, 1, Ont., Canada.
C., N., B., P.H.
- 446 GREENHILL, R. S. B., The Shieling, Village Way, Little Chalfont,
Bucks. C.S.C.
- 520 GREENWOOD, C. H., Capt., Cornerways, Uplowman Road, Tiverton,
Devon. C.N.
- 846 GREGSON, James Drinkwater, 31 Glen Eldon Rd., Lytham St. Annes,
Lancs. C.
- 607 GREY, Sqn.-Ldr. P. R., "Ashleigh," St. George's Rd., Weybridge, Surrey.
P.B., R.P.O.
- 1273 GRIERSON, W. H., 104 Bristol St., Waterloo, Ont., Canada.
- 1043 GRIMBLE, R. W., 122 Wynwood Drive, Windybush, Wilmington 2,
Delaware, U.S.A. C.
- 941 GROMYKO, Nicholas, 4 Southwood Hall, London, N.6. C. B.
- 1032 GUTZMANN, W. L., 38 Vinet Ave., Strathmore, P.Q., Canada. C. P, PER.SC.
- 1277 GYORFI, Dr. A. W., 62 Harbor View Drive, Sydney, N.S., Canada. C, N, B.

H

- 952 HAIG, Alexander, W., 29 St. Swithin St., Aberdeen, Scotland. C.
- 788 HAKANSSON, Henning, Dispenentgatan 14 B, Malmö, Sweden.
P.CL.CS.CG. C., N.
- 283 HAMMOND, Capt. H. A., Holdfast Post, Upton-on-Severn, Worcs. C., N.
- 1314 HANDFORD, A. H., 20 Marine Crescent, Deganwy, N. Wales.
- 483 HANNAH, John, 150 Ashgrove Road West, Mastrick, Aberdeen. C.
- 175 HARD, A. A., 42 Irvine Road, Colchester, Essex. C.
- 769 HARDON, John, 28 Ennerdale Ave., Workington, Cumberland. C, N.
- 1292 HARE, H. J., 20 Wilmar Gardens, West Wickham, Kent. MPO.
- 621 HARMER, C. H. C., 41 New Bond Street, London, W.1. N.
- 651 HARMER, H. R., 20 The Drive, Hove, Sussex.
- 253 HARPER, G. Broughall, F.C.P.S., 53 Chesil Court, Chelsea Manor St.,
London, S.W.3. C., C.R., C.G., V.
- 874 HARRINGTON, Dr. Paul, 813 Bathurst Street, Toronto, Canada. C.
- 413 HARRIS, A. Leonard, 50 Victoria Road North, Southsea, Hants. C.
- 739 HARRIS, Edmund A., 7516 80th St., Edmonton, Alta, Canada. C.
- 381 HARRIS, Dr. H. C. A., 277 London Rd., Portsmouth, Hants.
- 904 HARRIS, Miss M. H., 1405 West 12th Avenue, Vancouver 9, B.C.,
Canada. B. P. PH.
- 886 HARRIS, Sidney J., 6 Carlos Place, London, W.1. N.
- 637 HARRIS, M. A., Buckley House, Holcombe Road, Greenmount,
Nr. Bury, Lancs. C.N.
- 479 HARRISON, A. N., C.V.O., O.B.E., 'White Oaks', Bloomfield Rd., Bath,
Somerset. C., N.
- 1177 HARRISON, H. W., P.O. Box 5780, Pikesville 8, Md., U.S.A. CL.
- 1278 HASSAN, W. J., 406 N. Tioga, Ithaca, N.Y., U.S.A. N.
- 942 HATTEY, Herbert J., 63 Earls Hall Ave., Southend-on-Sea, Essex. C.
- 983 HARRY, R. H. C., 235 Wickersley Rd., Rotherham, Yorks. C, P.
- 668 HARVEY, J. D. M., 27 The Chase, Stanmore, Middx. C.N.
- 906 HATFIELD, Major F. E., 15 Buttenshaw Ave., Arborfield, Berks. C.
- 1039 HAYES, H., 18 Field Hill, Batley, Yorks. C.
- 1131 HAYES, A. M., 62 Epping Way, Nth. Chingford, London, E.4. C.
- 1193 HAZELL, Dr. H. C., 119 Mornington St., Stratford, Ont., Canada.
CR—CQ, PA.
- 411 HAWLEY, Charles C. T., 23 Stevenson Crescent, Lower Parkstone,
Dorset. A.C.P.

- 211 HEDLEY, Richard P., 259 Delaware Ave., Buffalo 2, N.Y., U.S.A. C., N., B.
439 HEISSNER, Alfons, 4 Morven Drive, Clarkston, Glasgow. C., B., N.
934 HELLIWELL, Clifton, 9 Ridgway Place, Wimbledon, London, S.W.9. C.
1073 HELLIWELL, L. C., Keston, 19 Wood Lane, Timperley, Cheshire. C.
1051 HELLIWELL, M. S., 31 Drewstead Rd., London, S.W.16. CR—CS.
694 HENSMAN, Capt. M., D.S.O., South Hay House, Borden, Hants.
815 HERST, Herman J., Shrub Oak, New York, U.S.A.
1214 HETHERINGTON, A. E., 9 Parkview Blvd., Brockville, Ont., Canada.
BL, SC, PER, V.
84 HETHERINGTON, R. B., Beedings Cottage, Gay Street, Pulborough,
Sussex. C., C.R.2, P.C.
957 HEWSON, C. F. C., 30 Eppleworth Rd., Cottingham, East Yorks. C.
1279 HICKEY, F. J., 242 Lee St., Peterborough, Ont., Canada. CG.
743 HICKMAN, Kenneth M., 29 Aldren's Lane, Lancaster. CS—CG.
687 HICKS, George D., Listowel, Ontario, Canada. C.S.C.
1175 HIGGINBOTHAM, S., 93 SO. Central Ave., Wollaston 70, Mass., U.S.A.
C, RPO, SC.
1086 HILL, Dr. A. C., 309 Dufferin Ave., Sherbrooke, P.Q., Canada. C, N, B.
313 HILL, Ethelbert L., 29 Gorge Road East, Victoria, B.C., Canada. C., N.
956 HILL, G. M., 1612-50 Ave. S.W., Calgary, Alta, Canada. C, A, P.C.
304 HILL, Henry E., 42 Hillside Grove, Chelmsford, Essex. C.
1066 HILL, J. R., University Hospital, Saskatoon, Sask., Canada. C, B, PER.
1165 HILL, Miss L., 150 Finkle St., Woodstock, Ont., Canada. C.
1026 HILL, N., 34 Old Wortley Rd., Rotherham, Yorks. RPO.
919 HILLARD, F. G., 14 Moorcroft Rd., Liverpool, 18. CR—CE. PA. A.
806 HILLSON, Noel John A., 32 Pensford Avenue, Kew Gardens, Surrey. CG.
768 HINCHCLIFFE, John, 9 Broadgate Crescent, Almondbury, Huddersfield,
Yorks. C.
727 HINDE, H. E. W., Broomhurst, Shobley, Ringwood, Hants. C.
701 HINGE, Cyril A., Roslyn, Western Road, Margate, Kent. N.
950 HIPWOOD, John F. Woodlands, Potter Hanworth, Lincoln. CL—CQ. C.
910 HIRSCH, Willie, P.O. Box 918, Prestcott, Ontario, Canada. C.V.
563 HIRST, S. F. (Dr.), 59 Scarisbrick New Rd., Southport, Lancs. C.
1267 HISLOP, F. W., Rose Cottage, Linlithgow, West Lothian.
564 HITCHCOCK, H. N., Mowbray, Arundel, Sussex. C., C.G.C.
548 HOBSON, C., 1 Mountlands, Hardwick Sq. South, Buxton, Derbyshire.
C.B.N.
1024 HOLDEN, E. K., P.O. Box 399, Benoni, TVL, S. Africa. P.C, R.P.O.
771 HOLLAMBY, Wilfred A. E., 4 Wickham Crescent, West Wickham, Kent. C.
726 HOLLANDS, Hedley J., Apt. 512, 103 Avenue Rd., Toronto 5, Canada.
C.V.P.
288 HOLLOWAY, F. G., Rosslyn, 20 Lodge Rd., Walsall, Staffs. C.
424 HOLLINGSWORTH, Dr. C. W., 17 Mellish Rd., Walsall, Staffs. C.
96 HOLMES, L. Seale, M.D., Medical Arts Bldgs., London, Ontario, Canada.
C., N.B., P.L., P.S.
827 HOLMES, Dr. Ralph Jerome, Dept. of Geology, Columbia University,
New York, U.S.A. C.
1303 HOLMOK, Dr. E. H., 2 Amesbury Ave., Apt. 2, Montreal 25, Canada.
363 HOOD, Edgar J., 19 Douglas Road, Southbourne, Bournemouth, Hants.
C., N.
782 HOOKHAM, George W., 39 Bush Hill Road, Winchmore Hill,
London, N.21. C.
1245 HOOPER, A. R. S., 34 Holton Ave South, Hamilton, Ont., Canada. C.
349 HOPKINS, Major Adrian E., M.C., R.D.P., Ormond House, Sion Hill,
Bath, Somerset. C., N., B., P.H., P.B.
1135 HORBAY, M. W., 444 Bredin Drive, Winnipeg, Man., Canada. C.
947 HORNBY, Fred, 8120 East Jefferson Ave., Detroit 14, Michigan, U.S.A.
CR—CQ. C.B.
1049 HORNE, B., 2709 Montcalm Cresc., Calgary, Alta, Canada. C.
1153 HOROWITZ, P. S., P.O. Box 38, East Elmhurst 69, N.Y., U.S.A.
468 HOSKING, S. J., 18 Parc Letta, Heamoor, Penzance, Cornwall. C.
602 HOWARD, L. D., Ardmore Road, Papakura, Auckland, New Zealand. C.B.N.
316 HOWE, B., 16 Primrose Street, Leith, Edinburgh, 6. C.
961 HUNT, H. R., 3 Valley View Drive, Bloomfield, Conn., U.S.A. C, B.
447 HUNTER, S. C., 60 Harrington Road, Preston Park, Brighton, Sussex. C., N.

- 488 HURST, P. J., Apt. 329, 3445 Cote Des Neignes Rd., Montreal 25,
Canada. C.P.—C.O.
635 HUTTON, T. R., 5 Elm Close, Amersham, Bucks. N.
776 HYDE, Alexander, 337 Stagg Street, Brooklyn 6, New York, U.S.A.
C.P. PA. V.

I

- 995 INSLEY, A. H., 378 Melrose Ave., Toronto 12, Canada. C.
407 IRELAND, Harry, Lilybrook, Heughfield, Bridge of Earn, Perthshire. C.
412 IRWIN, George, 16 College Ave., Bangor, Co. Down, Northern Ireland. C.
200 IVRY, Sid, 4538 Kensington Avenue, Montreal, Que., Canada. C., N., B.
778 IZZETT, Rev. D. S. T., Malplaquet House, Duke of Connaught Rd.,
Aldershot, Hants. C, PC.

J

- 1235 JACK, J., 9 Hunter Cresc., Troon, Ayrshire. C.
1249 JACO, Dr. N. T., 142 McNaughton St., Sudbury, Ont., Canada.
417 JACOB, Dr. L. G., Bracondale, Bracknell, Berks. C.
1107 JACOBSON, B. S., P.O. Box 4194 Santa Barbara, Calif., U.S.A. C, S, C.
130 JACKSON, Arthur P., 14 Linden Way, Boston, Lincs. C.
245 JACKSON, F., 27 Weston Ave., Rochdale, Lincs. C, PC, O.
1058 JAMES, Dr. E. S., 790 Sherbrook St., Winnipeg, Canada. C, PC, O.
161 JAMIESON, R. A., Q.C., Box 235, Almonte, Ontario. P.L., P.
206 JARRETT, Fred, R.D.P., F.C.P.S., Box 302, G.P.O., Toronto, Canada.
C., N., B., P.
1226 JARVIS, L. E., 28 Lynn Haven Rd., Toronto, 19, Canada. PS. CS.
402 JEFFREY, George N., 11 Saltwell Road South, Gateshead-on-Tyne. C.
195 JEPHCOTT, Dr. C. M., 323 Rosemary Road, Toronto, Ont., Canada.
C., N., B.
1097 JEWETT, F. C., 89 Thursfield Cresc., Leaside, Toronto 17, Canada. C, B.
57 JOCKEL, Charles H., 61 Great West Road, Hounslow, Middlesex. C.
1126 JOHNSTON, Dr. E. A., 12 Muirfield Road, Inverness. CGC—CGE.
1264 JOHNSON, Col. J. M., Wharnecliffe Lodge, Rustington, Sussex. C.
918 JOHNSON, Reginald, 45 Hatherleigh Rd., Ruislip, Middlesex. C.
699 JOHNSTONE, Stuart, 2091 W. Broadway, Vancouver, B.C., Canada.
C.B. (B.C.)
1182 JOLY, G. E., 8350 Casgrain, Montreal, Que., Canada. C.
470 JONAS, Cyril, 8 Lingfield Drive, Cross Roads, Keighley, Yorks. C.
540 JONES, C. A., Miss, P.O. 1133, Halifax, N.S., Canada. C.N.B.
1228 JONES, N. L., Bruce Peebles, 56 Victoria St., London, S.W.1.
767 JOYCE, William Tom, 48 Deighton Road, Deighton, Huddersfield, Yorks. C.
367 JUDD, Allan F., Flat 1, 34 Adelaide Crescent, Hove, Sussex. C.
116 JUPP, E. W. Scott, 33 Victoria Street, Aberdeen. C., A.

K

- 1268 KAMCKE, T., 792 Washwood Heath Rd., Birmingham 8.
1110 KANEE, S., 122 Ash St., Winnipeg, Man., Canada. C, CR2.
679 KAY, Marshall, 175 Glenwood Avenue, Leonia, N.J., U.S.A. N.
88 KAYE, Bertram, 6 Park Road, Birstall, Leicester. C.
398 KEANE, F. W. L., Summerland, Brit. Columbia, Canada. C., P.S.
1129 KELLY, D. H., 365 Woodville Rd., Lancaster, N.B., Canada. C.
1104 KEMP, C. A., 134 Forest Hill Rd., Toronto 7, Canada. CS.SC.
199 KEMP, C. G., 4402 King Edward Avenue, N.D.G., Montreal, Que.,
Canada. C., N., B.
561 KENNINGTON, P., Ibis Lodge, Hellesdon Road, Norwich. C.
1061 KENYON, S. S., 10943 118 Street, Edmonton, Alta, Canada. CR—CL.
1117 KERN, K. F., 2700 Sunset Dr., Bellingham 27, Wash., U.S.A. C.
770 KIEFABER, Warner H., 634 Woods Road, Dayton 19, Ohio, U.S.A.
C.N.B., PE.
1236 KILLINGLEY, E., 21 St. James Rd., Bridlington, Yorks. C.
1133 KILPIN, R. M., 266 Flinders St., Mount Yokine, Western Australia. C.
482 KING, Chas. A., 43 Riddlesdown Rd., Purley, Surrey. C., B., N.
499 KING, A. E., 2 Temple Fortune House, Finchley Road, London, N.W.11.
C.N.B.

- 803 KING, Garfield A., 4636 West 8th Avenue, Vancouver 8, B.C. C.
 1029 KING, L. A., 12 Mount Ephraim Rd., Tunbridge Wells, Kent. C.
 1090 KIRCH, D. R., Pandora, New Rd., Esher, Surrey. C, P.
 1108 KIRBY, A. E., 19 Johne Ave., Willowdale, Ont., Canada. C.
 60 KIRBY, Harry C., "Acton Farm," Over Alderley, Macclesfield, Cheshire. C.
 724 KITCHEN, John M., Route 6, Woodstock, Ont., Canada. C.
 598 KNIGHT, E. H., 11 Cedar, Pointe Claire, Lakeshore, P.Q., Canada. C.B.N.
 264 KNIGHT, Ralph A., Hartford Lodge, Brompton Regis, Dulverton,
 Somerset. C.
 764 KNOWLES, David, Garthdee Villa, 47 Garthdee Rd., Aberdeen. C.
 1142 KOREL, G., 20 Blenheim Rd., London, E.2.
 1280 KOZAR, D., 86 Tolton Ave., Hamilton, Ont., Canada. C.
 736 KRAEMER, J. E., 18 Cambridge Avenue, Kitchener, Ontario, Canada.
 PC. R.A.P. PER. S.C.
 399 KROHN, Edward W., 151 Dorchester Waye, Hayes, Mddx. C.
 1055 KYFFIN, G. E., 66 Shaw Rd., Heaton Moor, Stockport, Cheshire. C.

L

- 923 LA LONDE, Louis F., 67 Athenlay Rd., London, S.E.15. C.
 1044 LAMONT, R. A., 21 Sang Rd., Kirkcaldy, Fife. C.
 915 LAMOUROUX, Louis M., 222 Lawrence Ave. West, Toronto 12, Canada. C.
 857 LAMB, Richard M., Box 573, Kitchener, Ont., Canada. CL.
 562 LANCE, Dr. G. N., "Wellan," Coombe Valley Road, Preston, Weymouth,
 Dorset. C., C.G.C.
 291 LANGLEY, Leslie, 12 Glenbank Road, Lenzie. C.
 987 LANGLOIS, Pierre, 98 Cours de Vincennes, Paris 12, France. C, P.
 1084 LANGSTROTH, Dr. R. S., 190 St. John St., Fredericton, N.B., Canada. CQ.
 500 LATHWELL, A. K., 33 Reginald Street, Luton, Beds. C.P.
 991 LA PIERRE, Leo, 339 McEwan St., Windsor, Ont., Canada. C.
 1118 LAVER, F. W., Goss House, Street, Somerset. C.
 638 LAW, J., 70 Frank St., Tilsonburg, Ont., Canada. C.N.B.
 928 LAYCOCK, Frank, Rombald's Stride, Maxwell Rd., Ben Rhydding, Ilkley,
 Yorks. C.
 504 LEA, W. E., F.C.P.S., 446 Strand, London, W.C.2. C.N.B.
 350 LEA, John A., 7 Cressingham Road, Stretford, Lancs. C., N., B.
 566 LEACY, J. G., 15 Shelburne Road, Calne, Wilts. C.B.N.
 429 LEITH, Thomas P., 46 Main Street, Tweedmouth, Berwick-on-Tweed. C.
 880 LEE, G. L., Dunleith, Bernardsville, N.J., U.S.A. C.
 896 LEE, George A. M., 78 Meo's Parade, Holylake, Ches. C.
 119 LEES-JONES, R. W. T., F.R.P.S.L., F.C.P.S., Merridale, Bank Hall Lane,
 Hale, Cheshire. C.R. to C.S.
 1259 LETO, A. J., 215 Baynes St., Buffalo, 13, N.Y., U.S.A. C.SP.
 1201 LESPERANCE, L. A., 238 Chambly Rd., Longueil P.Q., Canada. C.
 212 LEVINE, J., 209 Pine Tree Road, Oxford, N. Carolina, U.S.A. C., N., P., P.C.
 853 LEVITTON, Daniel, 129 Broadway, Herne Bay, Kent. C.V.
 453 LEWIS, Gordon P., 37 Eldomar Avenue, Brampton, Ont., Canada. C., B., N.
 1132 LIGHTBODY, H., 188 Albert Dr., Glasgow, S.I. C.
 1215 LIGHT, E. W., Wildrose Farm, Peers, Alta, Canada. C.
 588 LIGHTFOOT, E. G. H., 75 Pembroke Crescent, Hove 3, Sussex. C.B.N.
 589 LIGHTFOOT, O. M. (Mrs.), 75 Pembroke Crescent, Hove 3, Sussex. C.B.N.
 659 LINIKER, Capt. John Edwin, 1 Brantwood Ave., Monkseaton,
 Whitley Bay, Northumberland. C.
 834 LINTON, Humphrey Clement, 2714-West 31st Ave., Vancouver 8, B.C.,
 Canada. C. B.S. P.
 565 LISLE, F. B., 110 Fore Street, Kingsbridge, Devon. C.B.N.
 1159 LITTLETON, J. H., 13 Keldane Gardens, Newcastle-on-Tyne, 4.
 1241 LITTLEFIELD, L. N., 52 West Emerson St., Melrose, 76, Mass., U.S.A. C, CS.
 656 LOCKETT, Dr. John, 3 Church Road, Worthing, Sussex. C.
 1301 LONG, L. R., 24 Lowther Rd., Brighton 6, Sussex. C.
 1103 LONG, T. M., 491 Queenstown St., Winnipeg, Canada. C.
 946 LOVELL, Thomas S., 28 Arleston Drive, Wollaton, Nottingham. C. SP.
 759 LOWE, Robson, 50 Pall Mall, London, S.W.1. C.N.B. PE.
 616 LOXSTON, J., 38 Albemarle Road, East Barnet, Herts. C.P.

- 1157 LUDLOW, L. M., Jr., 300 W. Orange Grove Ave., Arcadia, Calif., U.S.A. CR—CQ, SC.
 732 LUKOW, Stanley, 472 McKenzie St., Winnipeg, Man., Canada. CR—CS.
 780 LUM, Stanley, 2 FTS, RCAF Station, Moose Jaw, Sask., Canada. C.CS.BS.O.
 487 LUSSEY, Harry W., 137 Voorhis Avenue, New Milford, New Jersey, U.S.A. C.
 959 LYFORD, C. D., 13 Ranelagh Rd., Sheerness, Kent. PC.
 1002 LYON, P. A., 1065 Victoria Ave., St. Lambert, Que., Canada. C.
 501 LYSTER, P. G., Major, The White House, Marazion, Cornwall. C.
 697 LYMAN, Robert W., 31 Front St., Marblehead, Mass., U.S.A. C.R. P.E. PH.

M

- 377 MACASKIE, James P., F.C.P.S., 23 Thornhill Avenue, Lindley, Huddersfield, Yorks C., PS.
 600 MACCALLUM, R. S., 8 Lafayette Road, Larchmont, New York, U.S.A. C.
 819 MACKIE, Alexander S., 11 Pittsruan Pace, Aberdeen. C.
 243 MACNAB, R. S., P.O. Box 1244, Station B, Ottawa, Ont. C., P.L., R.
 557 MACNAMARA, G., 22 Herbert Place, Dublin, Ireland. C.B.N.
 841 MacCONNALL, Mrs. E., Wilton Park House, Wilton, Cork. C.
 800 McCALLUM, John A., P.O. Box 214, Knowlton, Quebec, Canada. C.B.P.
 851 McCONNELL, Alex., 77 Garscube Rd., Glasgow, C.4. C.
 845 McCONNELL, Lamack Dennis, 20 Blenheim Drive, Allestree, Derby. C.P.
 973 McCUSKER, J. J., Jr., 81 West High Terrace, Rochester 19, N. York, U.S.A. C.S., P.
 641 McCUTCHEON, Dr. J. E., 156 Connaught Crescent, Regina, Sask., Canada. C.
 1254 MacDONALD, B. F., 158 Main St., Bible Hill, Colchester County, N.S., Canada.
 900 MacDONALD, Dr. John J., P.O. Box 38, Antigonish, Nova Scotia, Canada. B. CR—C.Q. P.SC.
 823 McDONALD, Kenneth, 9 North Bridge Arcade, Edinburgh, 1. C.
 1194 McGORMAN, J. W., 11 Elizabeth St., Stratford, Ont., Canada. CR—CO. PA.
 1077 McGRATH, E. J., 37 Chaplin Ave., St. Catharines, Ont., Canada. CL. RPO.
 683 McGREGOR, A. F. L., 8 Kirk Crescent South, Cults, Aberdeenshire. C.
 21 McGUIGAN, Edward, 26 Morley Crescent, Borestone, St. Ninians, Stirling. C., P., S.P., C.G.
 1227 McINTOSH, R. T., 2234 Harvard Ave., Montreal 28, Canada. C.
 1149 McINTYRE, A. W., 10918—84th Ave., Edmonton, Alta, Canada. C, N, B.
 994 McKANNA, A. G., 41 Saybrook Ave., Toronto 18, Canada. CG.SC.
 105 McLAREN, Robert H. G., Hestercombe Ho., Chedden Fitzpaine, Taunton, Somerset. C., P.H.
 480 McLELLAN, Col. Duncan, 30 Rostan Road, Hillpark, Glasgow, S.3. C.
 1076 McLELLAN, G., 30 Roston Rd., Hillpark, Glasgow, S.3. C.
 1198 McLELLAN, R. F., P.O. Box 45, Truro, N.S., Canada. C, N, B, BL.
 907 McLENNAN, Lindsay Milne, 184 Arkell St., Hamilton, Ontario, Canada. C. PC. PER. SC.
 740 McLEOD, J. M. H., 12203 115th Ave., Edmonton, Alta, Canada. CR2.
 1238 McMILLAN, A., P.O. Box 81, Lockerby, Ont., Canada. C, N, B.
 680 McMURRICH, J. Ronald, St. Lawrence Steele and Wire Co. Ltd., Gananoque, Ont., Canada. CNB. CS. PV.
 1098 McNEIL, C. R., 833 Kingsway Drive, Burlington, Ont., Canada. O, PER, V.
 9 McNEIL, Harold, B.Sc., A.R.I.C., 71 Finnart Street, Greenock. C., A., V.
 31 MAIR, A. W. R., Wellesley, 45 Westburn Road, Aberdeen. C., N.
 1138 MALCOLM, A. P. C., Coolvalley, Lucan Co., Dublin, Eire. C.
 968 MALCOLM, C. G. S., c/o Canadian Bank of Commerce, 48 Berkeley Square, London, W.1. C.
 327 MANLEY, G. E. L., 151 Ebury St., London, S.W.1. P.C.
 1212 MANNERS, G. S., 46 Iverna Court, London, W.8. PH, PS. P.
 1179 MANNING, K. J. A. O., Undermoor, Chagford, Devon. P.H.
 706 MARLER, Hon. George C., F.C.P.S., 1517 Royal Bank Building, 360 St. James St. West, Montreal. C.CG.
 1281 MARESCH, W. H. P., 628 Yonge St., Toronto, Ontario. C.
 154 MARR, Alexander, 38 Cattofield Place, Aberdeen. C., N.
 392 MARS DEN, Philip S. S. R., 8 Meadow's Lane, Saughall, Nr. Chester, Cheshire. P.S.

- 55 MARSHALL, William, 748 Waterloo Street, Winnipeg, Canada. C.
 240 MARTIN, T. Stuart, F.R.S.A., Westwood, 323 Chesterfield Road South,
 Mansfield, Notts. C.
 824 MARTIN, J. Stanley, 465 Nyberg Street, Kitchener, Ontario. C.
 1106 MARTIN, W. F. B., 249 Argyle Ave., Ottawa, Canada. C.P.
 643 MARTINDALE, E. L., 70 Shakespeare Street, Southport, Lancs. C.L. C.S. V.
 1219 MARTINDALE, W. O., 459 Sprague St., Winnipeg, 10, Canada. C.
 1282 MATEJKA, Dr. J. J., 10 No. La Salle Ave., Chicago 2, Ill., U.S.A.
 615 MATON, N. E., 4 St. Michaels, Courtenay Rd., Newton Abbot, Devon. C.
 525 MATTHEWS, W., 114 St. Stephen's Road, East Ham, London, E.6. C.N.B.
 925 MELHUIISH, Major L. J., The Queen's Own Hussars, 14th Internal
 Security, BFPO 69, Aden. C.P.
 773 MELLOR, Godfrey, "Lynton," Elmfield Road, Birkby, Huddersfield.
 B.C.N. PE.
 419 MELVILLE, D. G., 51 Duddington Rd., Edinburgh 15. N.
 1220 MELVIN, G. H., 3407—30 Ave., Vernon, B.C., Canada. S.C.
 1192 MENZIES, R. W., 513, 21st Street, Owen Sound, Ontario, Canada. C.
 20 MEREDITH, C. W., Drumaston, 7 Bayfield Gdns., Broughty Ferry,
 Dundee, Angus.
 1180 MERRIKIN, E., R.R. No. 3, Williamsburg, Ont., Canada. C.
 29 MERRYLEES, J. S., 5 Williamfield Avenue, Stirling. C., N., U.O.
 234 MEYERSON, D. C., 69 Fenimore Drive, Harrison, N.Y., U.S.A. C.N.B.
 765 MICHAEL, Albert L., 7 Woodbury Close, Croydon, Surrey.
 445 MIDDLEMAS, R. J., Roseworth, Kelso, Roxburghshire. C., B., N.
 720 MILLER, Dr. James H., 32 Kingslynn Rd., Toronto 18, Ont., Canada. C.
 927 MILLER, Ridley R., 57 Seacrest Ave., Cullercoats, N. Shields. C.
 1294 MILNE, B. F., 14350 San Jose St., San Fernando, Calif., U.S.A. SC.
 1075 MITCHELL, L., 57 Hemingway, Blackpool, Lancs. CG, N—P.
 46 MITCHELL, Dr. T. J., 41 Kelly Street, Greenock. C., V., P.
 1293 MITERMAN, I., 190 Windmill Rd., Willow Grove, PA, U.S.A.
 515 MONRO, H., M.A., 140 Gray Street, Aberdeen. C.M.
 1080 MOORBY, H. A., Aberlady, Wrotham Rd., Meopham, Kent. C.
 1059 MOORE, F. M., 68 South Parade, Belfast, N. Ireland. C.
 1283 MOORE, R. G., 88 Dunkirk, St. Thomas, Ont., Canada.
 1092 MOORE, R. R., 180 Prospect St., East Orange, N.J., U.S.A. C.
 1203 MOORE, C. A., 64 Oakmount Rd., Toronto, 9, Canada. C.
 1218 MORRISON, A. R., C.Q. Inn, 33 Sefton Rd., Addiscombe, Surrey. C.
 1161 MORSE, L. R., 151 King St. E., Saint John, N.B., Canada. CR—CS.
 79 MORTON, W. L., 11 Morven Road, Bearsden, Glasgow. C.
 1213 MOSER, H. W., 2 Redman Ave., Haddonfield, N.J., U.S.A. C.
 772 MOSS, R., 159 Graham Rd., London, E.8.
 916 MOUNTAIN, Joseph H., 212 S Franklin St., Chicago 6, U.S.A.
 C. PA., PH. B.
 1162 MUNRO, J. E. R., 711 Sherbrooke St., Peterborough, Ont., Canada. C.
 343 MUSK, George, 449 Central Drive, Blackpool, Lancs. C.
 1034 MYERS, Mrs. M., 20 Armley Grange View, Leeds, 12, Yorks. N, CGE.

N

- 837 NARATH, Prof. Dr. Albert, Darmstaedter St. 7, Berlin W.15, Germany.
 C. P.H. P.
 969 NICHOLSON, C. S., 97 Chudleigh Rd., Higher Crumpsall, Manchester, 8. C.
 513 NICHOLSON, E. A., Box 439, Nechako P.O., Kitimat, B.C., Canada.
 P.C., R.C.
 1048 NICKLE, S. C., 3015 Glencoe Rd., Calgary, Alta, Canada. CR—CQ.
 1012 NOBLE, Major J. E., Military Hospital, Waringfield, Moira, Co. Down,
 Ireland. C.
 385 NICOLL, Miss Dorothy, 9 Montague Road, Burnley, Lancs. C.
 28 NISBET, Dr. Alex F. R., 15 Berryhill Drive, Giffnock, Glasgow. C.
 85 NORTON-TAYLOR, Arthur C. B., St. Margaret's, Beaumont, Jersey, C.I. C.

O

- 10 OGDEN, Miss B. Lndhurst, F.C.P.S., c/o The Toronto Dominion Bank,
 3 King William St., London, E.C.4. C., P.A., A., N
 1143 OKIN, A., 288 Hackney Rd., London, E.2.
 517 ORKIN, Mrs. P., 220 Westburn Rd., Aberdeen. C.N.B.

- 1053 OROBKO, Dr. W., 300 Birks Bldg., Edmonton, Alta, Canada. C, B.
 1312 OWEN-DAVIES, S., Cloverfield, Aber Drive, Craigsid, Llandudno.

P

- 347 PAINE, H. L., R.R. No. 1, Brechin, Ontario, Canada. C.
 1020 PARK, P. A., 21 Evelyn St., Frankston, Vic., Australia. C.
 705 PARKER, Harry Douglas, 23b Park Cresc., Southport, Lancs. C.
 1093 PARKER, Dr. W. B., 29 Queen's Rd., Wimbledon, London, S.W.19. C.P.
 1261 PARKINSON, R. D., 35 Berkeley Rd., Galt., Ont., Canada.
 509 PARSONAGE, J. S., 50 Greenfield Drive, Huyton, Liverpool, Lancs. C.N.B.
 634 PARSONS, B. K., Upper Rosemullion, Cliff Rd., Livermead, Torquay,
 Devon. C.
 1146 PARSONS, Mrs. W. R., 10428—76th Ave., Edmonton, Alta, Canada. A.
 1067 PASCOE, H. A., 153 Helmsdale Ave., Winnipeg 5, Manitoba, Canada.
 C, B, PC, R.
 822 PAYNE, Charles William, 84 Kenilworth Road, Coventry, Warks. C.
 1008 PATERSON, J. A., 52 Hampton Court Ave., East Molesey, Sussex. C.
 333 PATTINSON, E. Harold, Quarry Howe, Windermere, Westmorland. N.
 783 PEARCE, Harold N. W., 138 Wincheap Street, Canterbury, Kent. C.P.C.
 721 PELLETIER, Narcisse (Mr.), 34 Blandford St., Toronto 10, Ont., Canada.
 C.N. Canadian Air Mails.
 1088 PENMAN, E. G., C.B.E., "Lindover," 2 Sunte Ave., Haywards Heath,
 Sussex. C.
 348 PETERMAN, Wm. C., 153 Westville Ave., Caldwell, New Jersey, U.S.A. C.
 789 PETRI, Pitt, 378 Delaware Avenue, Buffalo 2, N.Y., U.S.A. C.
 572 PETT, E., 41 Abbey Park Road, Grimsby, Lincs. C.
 685 PHILLIPS, Sidney W., 27 Franks Avenue, New Malden, Surrey.
 CS—CGC. V
 963 PICKERING, I. T., Sutherland House, New Herrington,
 Houghton-le-Spring, Co. Durham. C.
 943 PINION, George R., 8 The Plat, Horsham, Sussex. C.B.
 1222 PIKE, J. A., c/o Dawson Mining Co., Ford, Washington, U.S.A. B.
 449 PIPER, H. J., 12 Church Road, Willesborough, Ashford, Kent. C., B., N.
 153 PLATT, Donald L., 4 Granville Avenue, Newcastle, Staffs. B.S., C., D.C.
 1082 POLLARD, W. H., 167 Cordova St., Winnipeg, Canada. C.
 507 POLE, W. V., Dr., 44 Polworth Terrace, Edinburgh, 3. C.N.B.
 1123 POLLITZ, W. T., 45 Bromfield St., Boston 8, Mass., U.S.A. C.
 280 POLLOCK, F. Walter, 1019 Haddon Place, Teaneck, New Jersey, U.S.A. C.
 1158 POOLE, W. J., 1 Adelaide St., Strand, London, W.C.2. C.
 1302 PORTER, A. E., 70 The Avenue, S. Moulsecombe, Brighton 7.
 623 PORTER, C. A., Suite 2, 10528 Transcanada Highway, N. Surrey, B.C.,
 Canada. C.C.S.
 1200 POTTS, G. H., Merry Island, Halfmoon Bay, B.C., Canada. CL, BL, S.P.
 1124 POWELL, E. C., 10340 Wadhurst Rd., Edmonton, Alta, Canada. C, N, B.
 892 POWELL, George Arthur, 181 Mayor's Walk, Peterborough, Northants. C.
 1115 PRATT, J. T., Box 240 D, Route 3, Wayzata, Minnesota, U.S.A. B.
 414 PRICE, H. J., "Westholme," 79 Weston Road, Runcorn, Cheshire. C.

Q

- 577 QUINN, D. J., c/o The National Bank, 34 College Green, Dublin, Eire. C

R

- 56 RAE, George D., 43 Gray Street, Aberdeen. C.
 1266 RANDALL, R. W., 200 Eton Rd., Ilford, Essex. C.
 891 READE, John Alfred D., 124 Whitstable Rd., Canterbury, Kent. C.
 255 REESE, Joseph, Flat C, 101/102 Marylebone High St., London, W.1.
 C., N., B.
 1119 REEVES-BROWN, G., M.B.E., 7 Calverley Park Cresc., Tunbridge
 Wells, Kent. C, PA.
 647 REICHE, Hans, 22 Chapleau Ave., Apt. 3, Ottawa 2, Canada. CG.V.
 38 REID, Edwin G., 13 Salisbury Terrace, Aberdeen. C., N.
 560 REID, J. S., 29 Giffnock Park Avenue, Giffnock, Glasgow. C.
 1083 RENNIE, D. W., 117 Charles Ave., Valois, Quebec. C, N.
 709 RENNIE, Ernest, "Bowstones," Off Bridle Rd., Woodford, Stockport,
 Ches. C.N.

- 1318 REZANOWICH, A., 4527 Bellechasse, Montreal 26, Canada. C.
 210 RICHARDSON, E. A., 303 Pin Oak Drive, La Marque, Texas, U.S.A. C.B.N. SC.
 603 RICHARDSON, R. M., Box 292, Westville, Pictou Co., Nova Scotia, Canada. C.B.N.
 1050 RICHARDSON, S. T., 410 11th Ave., N.W., Calgary, Alta, Canada. C, B, S.
 1206 RICHES, F. C. H. R., 27 Manchester Rd., Altringham, Cheshire. C.
 1297 RIMINGTON, T. G., The Manor House, Heather, Leics. CR, C.S.
 1030 RIVIERES, Guy des, 71 St. Pierre, Quebec 2, Canada. C.
 1014 ROBERTS, A. G., 9 Parkview Rd., Hove 4, Sussex. CGE, P.C., R.P.O.
 542 ROBERTS, T. V., Hill House, Melbury Rd., Newcastle-on-Tyne 7. C., C.Q., P.B.
 717 ROBERTSON, Alan W., M.B.E., "Ranworth," St. Lawrence Dr., Eastcote, Middx. PH. esp. Maritime.
 469 ROBERTSON, D. G., Little Werneth, Claremont Road, Redhill, Surrey. C.
 481 ROBERTSON, W. A., 56 Mansewood Road, Hillpark, Glasgow, S.3. CS.
 374 ROCKE, S. F. Parry, The Old Smithy, Lea-by-Bockford, Nr. Mollington, Cheshire. C., V.
 1284 ROCKETT, W. C., 2030 Overlook Ave., Willow Grove, P.A., U.S.A. R.
 371 RODGERS, J. F., 49 Great Junction Street, Leith, Edinburgh. C.
 1101 ROITMAN, N. C., 490 Belmont Ave., Winnipeg, Man., Canada. C, B.
 1011 RORKE, W., 206 Clarke Bldg., 10162 102nd St., Edmonton, Alta, Canada. CR to CO.
 1315 ROSENBLAT, D. G., 3247 Washington St., San Francisco, Calif., U.S.A. CS.
 1230 ROTH, A. D., Fairways, Mona Crescent, Newlands, C.P., South Africa.
 604 ROUS, O. (Miss), 19 Ersham Road, Hailsham, Sussex. C.G.C.O.
 1265 ROY, Mrs. P. E., 40 Myrand Nord, Apt. 6, Ste. Foy, Quebec, P.Q., Canada. C., P.A.
 884 RUSHTON, E., 105 Main Street, Simcoe, Ontario, Canada. C.
 345 RUSSELL, Ernest C., 17 The Avenue, Lewes, Sussex. C., N.
 1111 RUSSELL, W. H., 7 Vinton St., Melrose 76, Mass., U.S.A. C.B.P.
 1127 RUTTER, S. R., 1 Woodfield Rd., Tonbridge, Kent. C.

S

- 865 SADLER, Alex., 371 St. Josephs Boulevard West, Montreal, Canada. C.
 1069 SALENIOUS, J. F., "Longcroft," Station Rd., New Waltham, Grimsby, Lincs. C, PH.
 1006 SALTER, T. H., Devon Constabulary, Ivybridge, Devon. C, PH.
 1272 SALVATORE, R. J., 800 1/2 Perry St., Watkins Glen, New York, U.S.A. C, P.
 268 SANDERS, H., 43 Bothnia House, Hartford Street, Stepney Green, London, E.1. C., B.S., A.
 811 SANDERSON, A. D., Selsdon Park, Sanderstead, Surrey. C.N.B.
 508 SANDERSON, C. W., Birnieknowes, Cockburnspath, Berwickshire. C.N.B.
 909 SARA, Stanley E., 2 Handside Green, Welwyn Garden City, Herts. C.
 390 SARGEANT, K. S., 18 Roselands Ave., Eastbourne, Sussex. C.
 1017 SATTINGER, R. H., 111 South Third St., Brooklyn 11, New York, U.S.A. C, R, P.S.
 1122 SCHIEWICK-SMITH, E. F., Box 123, Hudson Heights, Que., Canada. C, N. B.
 649 SCOTT, Bernard, 6F Wellington Court, Halifax, N.S., Canada. C.N.B.S.C.
 1139 SCOTT, J. W., 18 Strathmartine Rd., Dundee, Angus.
 176 SEARLES, George R. C., 191 Sandgate Road, Folkestone, Kent. C., V.
 1285 SHANTZ, S., 763 Green Lane, London, Ont., Canada.
 1070 SHARPE, L. W., 7 Hughson St. South, Hamilton, Ont., Canada. C. Mil. P.
 1216 SHEA, J. L., P.O. Box 292, Chicopee, Mass., U.S.A. CS, P, CG.
 518 SHEARER, J. L., 5 Mayfield Gardens, Aberdeen. C.N.B.
 533 SHEPPARD, F. S., 23 Hawthorn Gardens, Gosforth, Newcastle-on-Tyne, 3. C.N.B.
 1286 SHERRIN, S. C., Petrolia, Ont., Canada.
 219 SHIPTON, Charles E. C., The Old Forge, Hightown Green, Rattlesden, Bury St. Edmunds, Suffolk. C., P.C.
 1018 SHORT, C. J., 55 Manitoba St., St. Thomas, Ontario, Canada. C, N.
 945 SHOWERS, J. Grant, 377 Nelson St., Sarnia, Ontario. CS—CB.

- 1205 SIMMONS, A. R., 500 Brook St., Winnipeg 9, Canada. C.
847 SIMPSON, David, 20 Granby Rd., Edinburgh, 9. C.
1263 SIMPSON, W. L., 374 King St. W., Chatham, Ont., Canada. CR—CS, PE.
645 SINGMASTER, J. A., 46 Durham Road, Bronxville, 8, N.Y., U.S.A.
809 SIRETT, Mrs. J. E., 372 Waterloo Street, Winnipeg, Man., Canada. C.
126 SISSONS, James N., 204 Glenrose Avenue, Toronto, 5, Ont., Canada. C., N., B.
698 SIVERTS, John S., Box 425, Wilmington 99, Delaware, U.S.A. C.CR—CS. R.P.S.
1244 SIZE, D. C., 113 Glen Rd., Hamilton, Ont., Canada. C.
1255 SKOFAC, M., 100 Garside Ave. S., Hamilton, Ont., Canada. C.
378 SLADEN, C., Woolacombe, Broad Oak Lane, Penwortham, Preston. C.
1269 SLATE, W. H., 599a Bloor St. W., Toronto 4, Canada.
391 SMEATON, Alex. M., 35 Regent Park Square, Glasgow, S.I. C.
591 SMILLIE, I. S., East Mains of Auchterhouse, by Dundee, Angus. C.B.N.
41 SMITH, A., 29 Beechgrove Avenue, Aberdeen, Scotland. C., A., A.G., S.P.
1019 SMITH, A. F., 16 Woodill St., Halifax, N.S., Canada. C.
787 SMITH, Clarence C., 23 Charlton Village, Andover, Hants. C.N.
735 SMITH, Cyril Lyndon, 119 Lonsdale Rd., Barnes, London, S.W.13. C.
731 SMITH, Trafton C., 2756 Mortenson Blvd., Berkley, Mich., U.S.A. CL.—CGC. V.P.
351 SMITH, D. W., 387 Torbay Road, Ratners Lane, Harrow, Mddx. C.
1287 SMITH, F., 96 Humbercrest Blvd., Toronto, Ont., Canada. CS, P.
190 SMITH, G. W., 63 Galleywood Road, Chelmsford, Essex. A., C., P.H., P.S.
808 SMITH, Joseph Raymond, 42 Beech Grove, Ashton, Preston, Lancs.
1141 SMITH, M. D., 42 Hind Ave., St. James, Winnipeg, Canada. C, FDC. CE.—CGC.
840 SMYTHIES, Evelyn Arthur, C.I.E., F.R.P.S.L., Castle Morris, Tralee, Co. Kerry. CR—CS. P.P.A. C—MO.
1251 SODEN, F. H., P.O. Box 1259, Clearwater, Fla, U.S.A. C—MO.
1081 SOLEM, O. J., 26 Fulham Cresc., Winnipeg 9, Canada. C.
712 SOLENDER, Joseph D., 121 Ferney Rd., East Barnet, Herts. CG.—CGC. M.O. CR2
1307 SOLMI, Angelo, Via Pascoli 60, Milan, Italy.
1195 SOMERVILLE, Dr. J. C., 9 Hillhaven Rd., Barassie, Troon, Ayrshire. CQ—CGA.
1189 SONNE, C. C., Hotel Cecil, Moose Jaw, Sask. P. RPO.
1171 SOUTHEY, C. F., Young, Sasks., Canada. CS, SC, PH.
44 SOUTTER, A., 2 Wellpark Terrace, West Newport, Fife. C.
113 SPALDING, W. A., 9 Park Valley, The Park, Nottingham. C., N., P.H.
1288 SPARROW, W. G., 64 Lynngrove Ave., Toronto 18, Canada.
19 SPENCE, Albert W. D., 22 Adelaide Place, Dundee. C.
799 SPIER, J., 1817a St. Catherine St. W., Montreal, Canada. C.
1237 SPOONER, S. T., 2017 2nd Ave., Trail, B.C., Canada. C.
766 SPRY, Maj. Gen. D. C., C.B.E., D.S.O., C.D., c/o Boy Scouts International Bureau, Commonwealth Building, Metcalfe St., Ottawa 4, Canada. C.N.B. S.C.
1309 STEELE, A. C., 87 Ennerdale Rd., Walkerdene, Newcastle-on-Tyne, 6.
1 STEPHENSON, Alfred E., F.C.P.S., Cragview, West End, Colinsburgh, Fife. C., P., P.H., P.B., P.A.
1169 STERN, A., 216 McIntyre Bldg., Winnipeg, Canada. C, M, O.
1113 STEWARD, A. W., 116 King St. W., Yorktown, Sask., Canada. C, N, B.
876 STEWARD, M., 1 Daisy Hill Grove, Heaton, Bradford, Yorks. C.
972 STOKES, A. D., 396 Main St., Toronto, Ont., Canada. C.
1239 STOKL, F. P., 22 Organ Cresc., Hamilton, Ont., Canada. C, N, B.
1028 STOTT, A. J., Halecroft, Hale Rd., Hale, Cheshire. N.
814 STORRS, Godwin V. F., Abbey Lodge, Ashurst Wood, East Grinstead, Sussex. P.
630 STRINGER, K. E., Grove Lea, Lansdown Road, Bath, Somerset. C.
1243 STROUD, H. G., 53 Gage St., Hamilton, Ont., Canada. C.
75 STUDD, Brig. M. A., D.S.O., M.C., R.D.P., F.R.P.S.L., F.C.P.S., Whitewalls, Sunninghill, Berks. C., C.R., C.S., B., P.H., P.E.
1064 SWAILES, J. G., West Lea, 161 Manchester Old Rd., Middleton, Lancs.
1289 SWAN, D., 134 Belmont Ave., Hamilton, Ont., Canada. C.
804 SYMONDS, Clement, 8 Palmer Avenue, Willerby, Near Hull, Yorks. C.V.

T

- 432 TALKES, F. H., 65 Caledon Road, Sherwood, Notts. C.
 790 TALLISS, Albert E., 24 Acheson Road, Hall Green, Birmingham, 28, Warks. C.
- 1172 TARDIF, D. G., 55 Emmerson St., Edmunston, N.B., Canada. CR—CR2, C.L.
 441 THEEUWISSEN, R. F., 10 Rue du Moulin, Nossegham (B.T.), Belgium. C.
 1190 THOMAS, A. R., 31 Linnaean St., Cambridge 38, Mass., U.S.A. C.
 1060 THOMAS, P., "Hedsor," 104 Callington Rd., Saltash, Cornwall. C, N, B.
 342 THOMPSON, C. G., 66 School Rd., Hall Green, Birmingham, 28, Warks. C.
 587 THOMPSON, J. E. R., 1 Westholme, Orpington, Kent. C.N.
 1211 THOMSON, R. T., 168 Evelyn Ave., Toronto 9, Canada. C.
 954 THORMAN, W. P., 3407 West 40th Ave., Vancouver, B.C., Canada. C.
 849 TIERNEY, J., 24 Green Lane, Patricroft, Eccles, Lancs. C.
 464 TILLEY, E. W., 210 Old Road West, Gravesend, Kent. C, B, N.
 1229 TINCKNELL, D., 242 Superior Ave., Calgary, Alta, Canada. C, MPO, RPO.
 185 TITFORD, Miss Rose, Caymans Cottage, Ridgmont, Bletchley, Bucks. C, N, B.
- 812 TODD, Charles T. W., 18 Craig Terrace, Easington Village, Co. Durham. C.
 1151 TODD, J. D., "Reninghelst," 5 Greystoke Ave., Sunderland, Durham. C, PH.
 633 TODD, Norman, 74 Linden Road, Bognor Regis, Sussex. C.
 1035 TOMKINS, E. J., 95a Marshall Ave., Bognor Regis, Sussex. C.
 74 TOMLINSON, Frederick, F.R.P.S.L., F.C.P.S., Coombe Leigh, 56 Chestfield Road, Whitstable, Kent. C.S., P., 1898 MAP
 344 TOMLINSON, Leslie G., Betley, Nr. Crewe, Cheshire. B.
 1005 TONGUE, W. F., Wyvern House, Newington College, Stanmore, N.S.W., Australia. C.
 626 TONKIN, R. T., 285 Willoughby Rd., Naremburn, N.S.W., Australia. C.C.S.—CG.P.
 779 TOTTEN, Mrs. Eleanor A., 4600 Bruce Ave., Minneapolis 24, Minn., U.S.A. C.N.B. PS.
- 1046 TRAQUAIR, R. S., 1836 27th Ave., S.W., Calgary, Alta, Canada. C.
 1003 TRAVERS, J. W., 39 Cardigan Rd., Toronto 18, Canada. C.
 875 TREVOR, G. W., 17 Rothschild St., Glenhuntly, S.E.9, Victoria, N.S.W., Australia. C.
- 1311 TRUDEAU, R., 82 St. Denis, St. Lambert, Que., Canada. CR—CQ
 1047 TUNNA, N. C., 720 Poplar Rd., Calgary, Alta, Canada. C.
 1174 TUTTLE, G. M., Main St., Youngstown, PA., U.S.A. C. P.H.
 878 TYLER, John P., 218 Lakeshore Rd., Pointe Claire, Que., Canada. C.

U

- 1304 UNWIN, G. W., 111 High St., Rayleigh, Essex. P, V.

V

- 1094 VAN OUDENOL, P. D., Suite 4, 2717, 38 St. S.W., Calgary, Canada. C.R.
 1062 VAN NESS, Capt. W. O., 248 Gerry Rd., Hancock Village, Chestnut Hill, 67, Mass., U.S.A. C, N.
 423 VAN SICKLE, W. P., Burvan, 23 South Close Green, Merstham, Surrey. C.
 554 VARLEY, H. B., 23 Ellercroft Ave., Lidgett Green, Bradford, 7, Yorks. C.
 692 VAUDREUIL, David, Cmdr., R.N.V.R., Hollocombe, Strete, Nr. Dartmouth, South Devon. C.N.B.
 1109 VINCENT, V. H., 4944a Delmar Blvd., St. Louis 8, Mo., U.S.A. C.O.

W Y Z

- 832 WAINWRIGHT, Richard William, 51 Victoria Street, Aberdeen. C.
 998 WAKEHAM, P. T., 425 Belle Isle View, Riverside, Ont., Canada. C.
 177 WALBURN, H. G., Walburn Rd., R.R.S., Kelowna, B.C., Canada. C, P.C.
 400 WALKER, Alan R., 46 Griffiths Ave., Cheltenham, Glos. C.
 1120 WALKER, C. T., 14350 Ravine Drive, Edmonton, Alta, Canada. C.
 350 WALKER, Frederick, June Cottage, North Street, Petworth, Sussex. C.
 289 WALKER, P. G., F.R.P.S.L., Long Spinney, Cragg Lane, Huby, Nr. Leeds, Yorks. N., E.P.
 917 WALKER, James G. B., Crieff Hydro, Crieff, Perthshire. C.

- 473 WALLACE, R., "Eildon," Old Edinburgh Road, Inverness. C., B., N.
609 WALLIS, L. A., 56a High Street, Whitstable, Kent. C., B., N.
715 WALTERS, Edwin P. F., Dormy House, 12 Harold Rd., Deal, Kent. C.
763 WARD, Murray John, 11125, 60 Street, Edmonton, Alberta, Canada. C., U.O., P.C. PER.
1199 WATERS, P., Austin, Manitoba, Canada. C.
1102 WATKINS, H. G., 581 Portage Ave., Winnipeg, Man., Canada. C, B.
932 WATMOUGH, W. W., 118 Balmoral Ave. S., Hamilton, Ontario, Canada. C.
506 WATSON, J. C., 35 Woodburn Avenue, Airdrie. C.N.B.
129 WATSON, Dr. V. M. M., 3 Albyn Terrace, Aberdeen. C., N.
868 WATSON, R. J., R.R., 1 St. Marie Road, St. Anne de Bellevue, Quebec, Canada. C.P.S.
929 WATSON, Major Robert M., 7004 Somerled Ave., Montreal 29, Canada. C.
519 WAY, C. B., Miss, Garthmyl Hall, Montgomery. C.
795 WEBB, David N. A., 87 Eastern Ave., Mitcheldean, Glos. C.
1041 WEBB, Lt.-Col. R. H., 25 Melgund Ave., Ottawa, Canada. C, P.
948 WEISS, Harry L., 5615 Monkland Ave., Montreal 28, Canada. C.
254 WELLBURN, Gerald E., R.D.P., F.R.P.S.L., F.C.P.S., Deerholme, Duncan, B.C., Canada. C., N., B., G.B., P.H.
848 WELLESLEY-ASHE, H., Flat 3, 6 Augusta Gardens, Folkestone, Kent. C.
1191 WESTHAVE, C. A., 11 Spafford Rd., Milton 86, Mass., U.S.A. P, BL.
975 WHEADON, R. O., No. 13 Caravan Site, R.A.F., Benson, Oxford. C, O.
1181 WHIPPLE, A. E., 239 17th Ave., St. Eustache Sur le Lac, Que., Canada. C.
81 WHITE, W., 82 Mitchell Street, Glasgow. C.
529 WHITE, W. T., 6312 Marguerite Street, Vancouver, 13, B.C., Canada. C.B.
611 WHITEHEAD, A. (Dr.), 52 Havelock St., Amherst, N.S., Canada. C.P.V.B.N.S.C.
1248 WHITEHEAD, K., 76 Vere Rd., Peterborough, Northants. C.
981 WHITEHEAD, Miss A., Flat 3, 16 Palmeira Ave., Hove, Sussex. C, P.
1128 WHITEHOUSE, Maj. F. R. B., C.B.E., 22 Barlows Rd., Edgbaston, Birmingham, 15, Warks. CR—CS.
543 WHITLEY, E., 25 Harker Terrace, Stanningley, Pudsey, Yorks. C.P., C.Q.
100 WHITWORTH, Geoffrey, Westfield, Greetland, Halifax, Yorks. C., C.R.2.
364 WIDDOWSON, H. J., Clinton Hse., Pelham Rd., Sherwood Rise, Nottingham. C.
681 WILDE, P. A., 36 Alfreda Road, Whitchurch, Cardiff. P.
784 WILDING, Harold W. S., 135 Trail Avenue, Winnipeg 12, Man., Canada. C.P. CS.
1137 WILKINS, D. F., 36 Edward Ave., Aldridge, Staffs. C.
1290 WILKINSON, Mrs. G. E., 90 Elgin St. N., Port Hope, Ont., Canada. C.
437 WILLAN, Dr. R., F.C.P.S., Oak House, Shaw, Lancs. N.
599 WILLCOCK, W. M. C., Apt. 308, 5020 MacDonald Ave., Montreal 29, Canada. C.S.C.
620 WILLIAMS, Wm., 53 Central Road, Wembley, Middx. C.P.
890 WILLIAMS, Philip David, 20 Blenheim Rd., Old Basing, Basingstoke, Hants. C.P.C.
636 WILLIAMSON, Sir George A., Investment House, 6 Union Row, Aberdeen. C.N.P.
574 WILLINGTON, K., 13 Elmhurst Close, Lowestoft Road, Gorleston, Norfolk. C., CR—CQ.
410 WILLMOTT, Mrs. M. L., 28 Park Hill Rise, Croydon, Surrey. C.
879 WILMAN, P. D., Heathwood, 50 London Road, Buxton, Derbyshire. C.
856 WILSDON, J. F., Box 458, Hamilton, Ontario, Canada. C. P. PB.
1131 WILSON, F. L., 499 Quebec St., Sherbrooke, P.Q., Canada. C.
1148 WILSON, J. C., 10332—114th St., Edmonton, Alta, Canada. FDC.
551 WILSON, R., 42 Eton Ave., Hampstead, London, N.W.3. C.
1015 WODEHOUSE, N. E., 47 Woodland Ave., Hove, Sussex. C.
792 WOOD, Dr. Arthur Brian, 19 Southbourne Road, Bournemouth East, Hants. C.P. (R.P.O.s)
415 WOOD, Stanley A., 25 Ronari Rd., Mission Bay, Auckland E.1, N.Z. N.
1242 WOOD, J. A., 67 Albury Road, Aberdeen. C.
496 WOODALL, R. G., Forest Cottage, Holtwood, Wimborne, Hants. C., B., N., P.H., P.A., P.
1001 WOODHEAD, C., 123 Albertus Ave., Toronto 18, Canada. C.
895 WOODMAN, Murray M., P.O. Box 20, Dixville, P.Q., Canada. C.

- 663 WOODS, James Edward, 2 Hengrave Road, Honor Oak Park, London,
S.E.23. CR. CR2. CQ.
- 877 WOOLLEY, Robert J., 1520 Bathurst St., Apt. 405, Toronto 10, Canada. C.
- 585 WORSELL, J. M., The Nutshell, 7 Princess Gdns., Cliftonville, Margate.
C.G.C.
- 646 WORWOOD, W., 1462 17th St. North, Charny, P.Q., Canada. C.
- 536 WRESSELL, M., Mrs., 134 Newsome Rd. South, Huddersfield, Yorks. C.
- 758 WRIGHT, G. H., 23 Palmerston Road, Boscombe, Hants. C.
- 971 WRIGHT, G. B., General Delivery, Elliott Lake, Ont., Canada. C.
- 1317 WYNCOLL, J. F., 239 Wake Green Rd., Moseley, Birmingham 13, Warks.
P.V.
- 1188 YAFFE, I., 1612 West Franklin St., Baltimore 23, Mo, U.S.A. P. PRO.
- 774 YEATON, Vinton R., 8 Third Street, Dover, New Hampshire, U.S.A.
C.N.B.U.O.
- 1116 YOUNG, J. H. M., 305 Stewart St., Peterborough, Ont., Canada. C, B, SC.
- 863 YUILE, J. Watson, 1509 Sherbrooke St. West, Apt. 67, Montreal 25,
Canada. C.
- 960 ZUCKERMAN, B. M., Cranberry Express Station, University of Mass.,
East Wareham, Mass., U.S.A. C, N.

Total Membership—836

THE POSTAL HISTORY AND STAMPS OF PRINCE EDWARD ISLAND (contd.)

by Leslie F. Tomlinson, F.R.P.S.L.

Let us now consider the various issues of the stamps. There were 13 values. Gibbons' simplification brings in the three values of the fifth issue making 16, and detail 48 main varieties plus another 26 sub-types for specialists, giving a total of 74 varieties. My own reference list contains 85 varieties as will be seen, and I think it is quite likely that others will yet come to light.

The first issue consisted of three values, 2d., 3d. and 6d. perforated by Machine A. They were designed by Chas. Whiting, or for him anonymously, and were electrotyped, as were all Whiting's values for this country. The 2d. value was printed in sheets of 60 stamps, six horizontal rows of 10. The other two values, and the three remaining pence values which came later, were printed in sheets of 30, six horizontal rows of 5. There is only one secondary type in the pence values, namely in the 2d. The fifteenth cliché on the sheet gave out during the preparation of the plate, and a second mould was used. This type is constant in all reprintings, and is seen on the original plate.

The authorities realised prior to this issue that they had omitted to provide for 1d. and 1½d. rates. A 1d. stamp was needed for the internal rate for books, pamphlets or periodical publications, as well as for soldiers' and sailors' letters from Canada, New Brunswick and Nova Scotia, and a 1½d. stamp for newspapers to Newfoundland and Bermuda. They therefore announced that the 2d. and 3d. values would be accepted postally if they were bisected diagonally. A 1½d. value was never made. Having once been allowed to bisect stamps, the islanders formed the habit of bisecting any value which they required, even horizontally or vertically, and the Post Office always accepted them. However, they are rare when genuine, and as many faked bisects are found, great care should be taken in forming an opinion. The type of cancel used is a help, as are also sub-office stamps. In this connection, a knowledge of the sub-offices is very helpful. There were over 700 of these at various times, of which rather more than 100 remain.

A major variety comes next and should really constitute a separate issue. I refer to the 2d. rouletted. So many complaints were made of the difficulty of separating the stamps of the first issue that it is thought that Whiting submitted one or two sheets of these for trial. The only stamps which have been recorded came from one batch of correspondence, and six or seven of these were reported, at least one on original cover. King says they should rank among the great rarities. Bartlett says they are far rarer than a Canada 12d.

The second issue came in 1862 and consisted of 1d. and 9d. values, perforated by Machine B. There are no plate varieties or perforation variants.

The third issue was for bulk reprinting of all five values, perforated on Machine C and issued between 1864 and 1868. While the colours were apparently intended to be the same as for the previous issues, they differ quite widely in some cases. In the 1d. value of the 2nd issue, the main shade was orange-brown, while in the 3rd issue it was yellow-orange occasionally verging on yellow. In the 2d. value of the 1st issue the colour was dull rose verging to deep rose and claret, while in the third issue the stamps are carmine-pink. The 3d. value of the 3rd issue appears to be generally brighter in colour than that of the 1st issue. In the 6d. value, the colour is substantially the same in the two issues, yellow-green, though there are also distinctive blue-green stamps which may even comprise a separate issue as they are found from 1869 onwards. The 9d. stamps of the 2nd issue are dull mauve in colour; in the 3rd issue they are lilac, though there are also found stamps of a reddish mauve shade, which again may have come from a separate printing.

The 4d. value is a mystery. I have read 28 articles about its date of issue, and they range from Dec. 1860 to May 1870. I believe that it was printed at the same time as the other stamps of the third issue, yet it had not been recorded before 1869, except for one unchecked report. The postal charge to U.S.A. was reduced from 6d. to 4d. in Nov. 1868, and it would have been useful for overweight internal letters throughout, but I do not think it was put on sale before the spring of 1869. I have classified this as the 4th issue.

All four issues were printed on unwatermarked, yellowish toned paper, and apart from the main variations of shade already detailed, there are further variation of shade caused by inking density. The gum also varies considerably.

The fifth issue consisted of reprintings of the 2d., 3d. and 4d. values, and these are scarce used though common unused. They were issued in 1870-1 as the earlier stamps were used up. This issue is printed on a very different paper. It is a coarse wove bluish-white paper, which usually gives a different appearance to the stamps, though sometimes when it has discoloured with age or stain it appears at first sight to be the original paper. However on examination it will be found that there is a mesh to be seen on holding the stamp up to a light. Sometimes the mesh is faint and indistinct, usually it is pronounced, but the appearance is quite different from the toned paper, which is always clear and never leaves any doubt. The stamps have quite a different appearance—they seem harder, coarser and more metallic.

All six values are known bisected. The 3d. value is found doubly printed. The 2d. TWC has achieved catalogue status but is not a true secondary variety, as it is not constant even in the one issue. Many

perforating varieties are found, some of which are catalogued.

The sixth issue consisted of the beautiful 4½d. stamp, which was issued in 1870. It was printed by the British-American Bank Note Co. in sheets of 120—two panes of 60 with a gutter between. No trace of an order for this stamp has been found, nor does the warrant for payment of the stamps appear in the account books. It was ordered for the occasion of the reduction in the postal charge to Great Britain from 9d. to 4½d. cy. The Chalon head is different from those used for Canada, New Brunswick and Nova Scotia.

(to be continued)

DETAILED EXAMINATION OF THE NUMERAL ISSUE (1898-1902) OF CANADA (contd.)

by H. H. Brown

Constant Plate Markings. Transfer from the die by Transfer roll.

HALF CENT. A constant fine dot at top left corner ½mm. out from the centre line of top frame.

TWO CENTS. An extremely fine line with fine centre dot at centre of right frame, in the middle of white oval frame (outer). This constant marking from the original die soon wears off, and when found signifies an early state of the particular plate. Fine traces however may be found in the late plates, and even in the booklets which come from a special plate and possibly from a second die.

THREE CENTS. A well defined dot in the centre of the bottom frame, just inside the fine frame line.

FIVE CENTS. Nothing positive, but there is a slight break at the bottom corner of right numeral box, which may have either come from a defective die or from a break in relief of the transfer roll.

SIX AND SEVEN CENTS. Nothing that is certain.

EIGHT CENTS. A short vertical line just outside the right frame, and about 0.3mm. long opposite top end of A of POSTAGE.

TEN CENTS. A short horizontal line in the space between top of right numeral box and the inside of frame.

TWENTY CENTS. A sign of damage to the transfer roll transmitted to some but not all prints is a pinching of the top frame at right over maple leaf.

Constant Plate Markings Made upon the Plate:—

Positional guide lines are much in evidence, as the plates were not all properly "burnished off". The following are noted:—

HALF CENT. Guide dots near top left corner of all stamps on the left file of the left hand pane. A similar dot near centre of left frame on same file. A series of divergent dots at the bottom left corner of the same file—these gradually "drift" apart progressively from being close at the first (top) subject. Vertical guide lines were placed at the bottom left corners of all subjects of this vertical file, but they were mostly burnished off and the traces are found only on the early printings. A small dot is to be found, also restricted to early printings, at the top right corner of the top row of the left pane.

On the right pane a much better job was made of removing the guides, and little remains of the original marks.

ONE CENT. Guide lines and a very short vertical line were marked on

one plate near to the centre of the left frame on the left file of both panes, but traces only remain on early prints. Top row subjects on both panes of all plates show positional dots at the top left corner, while some stamps may be found with traces still of vertical lines at bottom left.

TWO CENTS (purple violet). For the most part all traces of guides have been removed, but a very bold double dot and vertical guide line is to be found at the top left. This obviously came to mark the top left line and file of as yet an unidentified plate.

TWO CENTS (red—both types). Guide lines and dots are mostly on the left side, longer lines being vertically placed to mark the bottom left, with shorter markers for top left corners. Left hand files also had dots and horizontal lines, but wear soon removed traces, and only early prints have these bedding marks.

FIVE, SIX, SEVEN, EIGHT AND TWENTY CENTS. Not sufficient observation.

TEN CENTS. Guide dots are found on a few subjects just over the right corner, also near the centre of left frame. At the bottom may sometimes be found a vertical line which extends nearly to the top and which came probably from the left file.

(to be continued)

CONVENTION EXHIBITION

At the Llandudno 1960 Convention, the displays provided an even higher standard of study and thought than have been seen for a number of years. A noteworthy point is the care and neatness that was apparent in the mounting and write-up of the sheets submitted.

In the research class, Dr. Hollingsworth put up a very well arranged display of Rail Post Office markings, many of which are rarely seen in England. The Rev. Izzett showed what appeared to be a very concise study of pre cancels. Mr. J. Hannah had a very well arranged and written up display of the Admiral War Tax issues. Beyond the ordinary overprinting he had discovered quite a number of re-entries which had not previously been published.

In the Study Group class, the Manchester circle had put together the history of Canada as depicted on postage stamps. This made a very fascinating study and was certainly very original. The London group displayed a selection of cancellations as found on the small Queen stamps, while the Pre Cancel Study circle submitted a few sheets of early pre cancels, many of which had not been seen before. The West Riding group carried their small Queen study a stage further by making a very comprehensive display of the 10 cent value. It was interesting to note that they had based their colour names on Stanley Gibbons colour chart, and the descrip-

tions were very apt.

In the contributed Class A section, Mr. Bonar had a very interesting display of registration rates and stamps of the small Queen period. There were a number of unusual items, and as usual, Mr. Bonar had made a very thorough investigation into this subject. Mr. J. Bird put up a short display of re-entries found on early Canadian stamps. Considering the vastness of the field, it was very satisfying to see the selection he had made covering the main range of known re-entries. Dr. Hollingsworth displayed a very compact study of the Flag cancellations as found during the period 1897 to 1900. There were quite a number of new items here that we had never seen before.

In the class B Section Mr. R. Woodall submitted a number of sheets showing the cancellations of the closed Post Offices of the Northwest Territory. This was a very unusual display and proved of great interest to many people. Mr. A. E. Stephenson submitted a study of the $\frac{1}{2}$ cent 1908 stamp, showing many large mint blocks and pieces. Mr. Bartlett of America sent us a very tidy and well written up display of the King George V Scroll issue of 1928. We were also able to see this issue in imperforate blocks which is very rare in England. Mr. H. H. Brown put up a very thorough study in the booklet stamps of the Queen Elizabeth issue. We are also very grateful to Mrs. Barrett who contributed a number of her Newfoundland

sheets which did not appear to duplicate previous years displays.

Dr. Willan and Professor Kaye of New York displayed some rare proofs and stamps of Newfoundland and Mr. D. Robertson put up a selection of sheets of the Admiral issue. Mr. Smythies of Tralee had a very comprehensive display of unusual cancellations of the small Queen period, many of which had not been seen before. The whole exhibition proved of great interest to our members, and we were complimented on it by the members of the local North Wales Philatelic Society who came to one of our evening meetings.

REPORT OF THE FELLOWSHIP SUB-COMMITTEE

The Sub-Committee met and considered the various nominations put forward.

Some concern was expressed in the fact that the enormous amount of **very original research** done by members of the Society, both in this country and overseas, had not resulted in members putting forward a greater number of worthy names.

It is not the Sub-Committee's take to make nominations, their job is to give an unbiased judgment of the nominations before them and then recommend what they consider the best of them to the General Committee.

It is surprising the number of nominations which are put forward which should never be nominated at all.

A complete lack of detail and information is noticed on the nominations put forward. This makes the work of the committee arduous. The committee would be grateful if members would in the future give as much detail as possible to substantiate their nominations.

To sum up:—

- (a) The quality of many of the nominations put forward is not good, whilst a number of more worthy names are not put forward.
- (b) More names should be put forward to create more competition for the very few vacancies.
- (c) It should be noted that the nominees not recommended one year do come forward for further consideration in later years.

Fellowship Sub-Committee.

THE UNCONVENTIONAL CONVENTION

by Jack Canuck

Jack Canuck booked in early to the Convention H.Q. only to find J. E. Bielby already in possession of the Imperial Hotel, Llandudno, new ground for the Society, never having ventured into Welch Wales before.

By Tuesday a host of members had arrived ready for the official opening of Convention on the Wednesday. There appeared to be all nationalities.

This prompts us to ask what are the ingredients for a Q.P.S. Convention. From what we make out it comprises

Two Canadians, One American Canadian, Three Irish, One Welch Welshman, and a bundle of mere Sassinachs, plus one Aberdonian, still looking for his bawbee.

It was pleasing to see the flow of members make their way to Herb. Bucklands table in the dining room to greet him. It took poor Herb. two days before he could sit down to a meal in peace. Incidentally this is his third visit in four years to be with us. You can't keep a good man down.

We were delighted to welcome back to Convention Phil. Marsden, he would be a great asset to the Manchester Group. We also were pleased to have Louis Lamouroux of Toronto with us and hope he is infected with Herb's desire to come back and see us. The same applies to Marshall Kay, but we have not yet decided whether we accept him as a Citizen of the U.S.A. or a Canadian, though I expect the Professor will be very decided in his answer to that one.

We also had our beauty chorus Bunny and the three Barratt Sisters, could we help it if folks forgot stamps while they were about.

One of our ladies was rather alarmed when some of the townfolk on seeing her Convention badge stopped her and asked "Are you here on the Old Age Pensioners trip." On the prom we saw Miss Walker taking Celia the Bull terrier for a walk, and wondered who was taking who.

The very bracing air appeared to have its effects for on arrival at hotel lounge we found the sleeping figure of H. F. Bleas with what appeared to us to be a "Don't disturb" notice across his chest.

On Thursday we were off on a delightful trip round Snowdonia where we had difficulty in restraining our Geologist Marshall Kay from taking Snowdon and the Llanberis Quarries back to U.S.A.

as specimens. We also became alarmed when Don Avery started a strip tease act and only stopped him in time or he would have given us the "Dance of the Seven Veils."

While on the subject of laundry, we still want to know why Margaret put Geof Harper in the Drip Dryer. Did she forget he was still inside the shirt.

On Friday a trip to the Swallow Falls, and then to a Welsh Woollen Mill where Jim Cater decided to hold up the bus while he bought his winter woollies, his return being accompanied by the Kruschew slow hand clap. By now everybody appeared to be wearing Tweed neckties made in Wales. We had the spectacle of Geof Harper coming back from what he says was a walk round the Great Orme, we still say he took a bus.

During the morning sessions we had some very interesting Study Circles, Dr. Willan leading the Newfoundland Circle. While Geof Harper and Charles Hollingsworth brought out some very interesting points for the Edwardian students.

We were also regaled by "Heffie" with Pre Cancels, but the most courageous man at the Convention was J. J. Bonar, fancy starting off a discussion on the shades of the Large and Small Cents. Well we had the inevitable war of what exactly is Indian Red which was only resolved when P. G. Walker decided to cater for "Ladies Choice" in the colours and shades of the Small Cents.

We were also regaled by a very fine discussion on the Plating of the 5c. Beaver by Geof. Whitworth who is a master of his subject.

A very fine display was given by our new President Stanley Godden of the Large and Small Cents. Guide us through the next year Stanley in the same style as your display and we will be happy.

Incidentally, this reminded us that the first Invitation Display ever given to the Society was by Stanley at Perth in 1947.

On Friday L. F. Gillam gave us a wonderful and most interesting display and talk on "R.P.O.s". His wonderful sense of humour set the talk off and did not allow interest to lag. Mr. Gillam's deep knowledge of Canadian Railways appears to vie with Winn. Bogg's knowledge of British Railways.

The Banquet was its usual brilliant show and everybody in happy mood. The Toasts were all put over in really witty speeches, but the best humour of the evening was when Mrs. Whitworth

replying for the "Ladies" turned the tables so nicely on Dr. Willan. While Sir George Williamson in his Scot's Doric proposing the "Guests" leaving our Welsh speaking Councillor Roberts of Llandudno wondering, in his own words, what the "Element."

We had the colourful ceremony of the "Signing of the Fellowship Roll" by our now Past President J. P. Macaskie, and who could have been a more worthy nominee than "Mac" who has done wonders for the Society.

The early hours saw a very tired gathering making for bed with Robin Hood Avery the last man on his feet.

The "Weeping and Wailing Meeting" on Sunday when we found that, when the usual time for departure came many refused to go and many were still hanging on till the bitter end and Monday.

Jack Canuck.

A FEW RANDOM NOTES ON THE 14th ANNUAL CONVENTION AT LLANDUDNO

By Jim Cater

This Convention attracted a nucleus of about 60, which was swelled by a few other philatelists who resided within reasonable travelling distance, and who came to participate in one or more of the varied items.

The displays, which were full of interest, attracted a great deal of attention, though possibly the intrinsic value was considerably less than on some previous occasions. Many of the exhibits proved that much can be done by a careful study of some of the commonest Canadian stamps, booklets, etc.

The Study-circles were greatly enjoyed and a difficulty here was the impossibility of being at 2 Study-circles at the same time! Much useful information was brought out in the varying discussions, including the "Hardy perennial" of shades on the Small Cents. Perhaps Mr. Smythies could be persuaded to write an article describing his procedure for picking it out.

Proceedings opened on Wednesday, 28th September, but some members had arrived earlier. Many old friends, including a strong Scottish contingent, were waiting to greet the later arrivals, and a few new acquaintances were soon making themselves known, including Professor Marshall Kay from U.S.A., who combined some Geological Research with his philatelic activities. Other Transatlantic visitors included

Louis Lamouroux from Toronto and the younger than ever Herb Buckland who we were glad to find in fine form in spite of his dreadful ordeal by fire since his visit to us last year.

During Wednesday evening the visitors were officially welcomed in both Welsh and English by the Chairman of the Llandudno U.D.C. (Councillor Robert Roberts, J.P.) in a most homely and pleasing manner.

Two excellent coach tours were thoroughly enjoyed by those taking part. On Thursday afternoon the trip covered the area of Swallow Falls, Capel Curig, Snowdon and Llanberis. Friday's trip was kindly arranged by the Llandudno U.D.C. and included a visit to the Trefriw Woollen Mills, where the various processes were extremely interesting to everyone except the Yorkshire members, to whom all this was already well known, and they were able to give much helpful information to those making the tour. After tea the return was made by a most picturesque route, with views of Anglesey, Beaumaris, etc.

The evening display after dinner was on "R.P.O.'s of Canada" by Lionel Gillam of Rotherham, whose excellent knowledge of the subject was ably demonstrated.

Stanley Godden now takes over the Presidency and he took the opportunity to announce the venue of the Convention for 1961 which will be held at the Metropole Hotel, Brighton, 4th-7th October.

Names of the winners of the various competitions were announced and

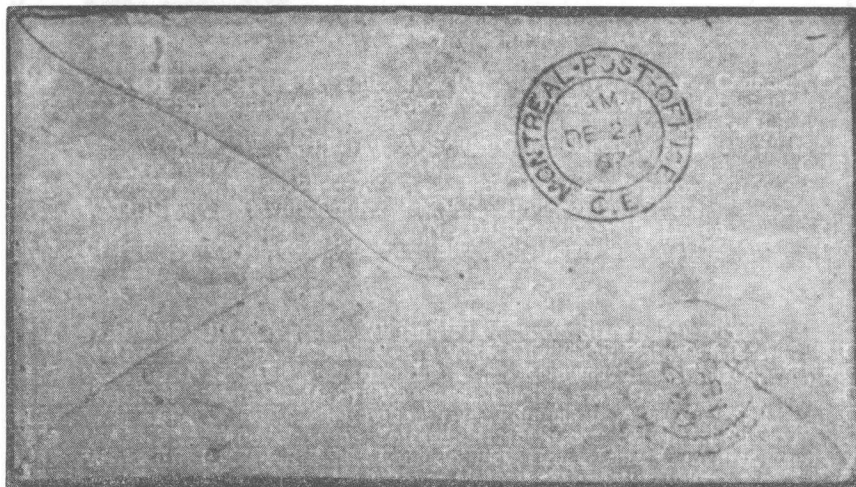
hearty congratulations were extended to them all.

After Lunch the Auction Sale was ably conducted by David Fortnum, the realisations creating a record for the Society.

Saturday evening saw the commencement of the Annual Banquet. Speeches were excellent, the toast of the Society being moved by Mr. J. Alfred Birch, President of the North-West Federation of Philatelic Societies, whose "ten commandments" for running a Society caused great amusement. He made it quite clear that the C.P.S. of G.B. needed no such advice and was confident that we would go on from strength to strength. He believed the Society was quite a model for other Societies and it was certainly getting itself talked about in other philatelic circles. Dr. Willan's toast "The Ladies" occasioned much hilarity, as did Mrs. Whitworth's able acknowledgment. Sir George Williamson, now recovered from the shock of having to judge the competitive exhibits, ably proposed the toast of the Visitors. Our New Fellow, Jim Macaskie, was brought forward by "Stevie" to sign the Roll of Fellows and then "Auld Lang Syne" terminated the proceedings. Mention must be made of the "philatelic" garment purchased by Bill Lea, which swelled the Society funds by a fiver: no one will now dare to call Bill a "Square"!

Sunday brought the usual sad farewells and many went home with pleasant memories of a Convention which fully measured up to previous high standards.

LETTERS TO THE EDITOR



EARLY CANADIAN POSTMARKS

Dear Mr. Woods,

The above illustrations may be of interest to collectors of early Canadian Postmarks.

It showed up among a few odd covers the writer was lucky enough to run across, a short time ago.

The cover mailed at Lacolle C.E. on the 24th December, 1867, bears a 5c. beaver stamp is addressed to Ayr C.W. which shows as a back stamp but the transient postmark of the Montreal Post Office C.E. is without doubt a very rare avis.

No local collector to whom I showed the cover had seen this before and I had again to consult Mr. Frank Campbell of Royal Oak, Michigan, and here are his comments:

"The Montreal Post Office C.E. Gothic Double circle you enclose is as scarce or scarcer than the tombstone marking which generally sells for plenty at auctions on account of its odd designation. I had this double circle listed for 1867-8 but had not seen it before. Such a perfect Strike too and even as a transient marking it certainly is rare."

W. M. C. Willcock.

19th CENTURY CANADIAN CANCELLATIONS

Dear Mr. Woods,

A Study Group, entitled NINETEENTH CENTURY CANADIAN FANCY CANCELLATION GROUP, has been formed, with members in U.S.A., Canada and Great Britain, and I have been asked to act as liaison member on this side of the Atlantic.

The Group is aiming to collect data on all types of fancy cancellations, and in particular to locate the P.O.'s of origin, and they have already made about 600 photographs of covers, cards, and pieces, showing this.

If any members in Great Britain have any covers, cards, etc., showing P.O.'s of origin of any interesting or unusual fancy cancellations—such as Leaves, Stars, Letters, Crosses, Faces, Masonic Signs, Geometrical designs, etc., which they would like to bring to the notice of the Group, would they please contact me at Castle Morris, Tralee, Ireland, in the first instance, with a brief description (or tracing) of such material. The ultimate aim is to produce a handbook recording and describing all known types.

Yours sincerely,

E. A. Smythies.

BOND STREET AUCTIONS

always include

CHOICE B.N.A.

many of our clients are B.N.A. collectors and specialists and through our catalogues are able to obtain the many fine properties which come up for auction at the Bond Street Auctions. If not on our mailing list NOW is the time to write for a subscription form. Reduced rates are available for B.N.A. collectors, and these include Prices Realised. Single rarities and choice collections are also available through out Private Treaty Service. Full particulars of current offers on request.

H. R. HARMER, LTD.

INTERNATIONAL STAMP AUCTIONEERS

41 NEW BOND STREET,

LONDON, W.1. - - Tel. MAYfair 0218

