

# MAPLE LEAVES

Journal of

THE CANADIAN PHILATELIC SOCIETY OF GREAT BRITAIN  
FOUNDED 1938 INCORPORATED 1946

Edited by JAMES E. WOODS

2 Hengrave Road, Honor Oak Park, London, S.E.23.

Opinions expressed in the various articles in this journal are those of the writers, and not necessarily endorsed by the Society.

Published Every Second Month by the Canadian Philatelic Society of Great Britain

Issued Free to Members.

Additional copies, 3/- each.

---

Vol. 9 No. 3

FEBRUARY 1962

Whole No. 75

---

## EDITORIAL

At the time of writing these notes we are in the middle of a 'go slow' by workers in the General Post Office, so if this particular issue is exceptionally late I must apologise for circumstances beyond the control of anyone.

## SUBSCRIPTIONS

Owing to space commitments it was not possible to report on one of the main items at the Committee and A.G.M.

The matter of financing has been a debating point for some while and after earnest discussion it was unanimously decided to raise the subscription to £1 per annum as from **1st October, 1962.**

It is obvious that this decision will not be popular with some members, but several factors have forced this upon us. A recent wage agreement in the printing trade has increased costs of production, administrative costs have risen, postage, etc.

The only obvious answer to this would have been a reduced size of each issue of "Maple Leaves" and worse still a possible reduction in the number of issues a year. From the very kind words of praise spoken at the A.G.M. and banquet it is obvious to all that we now have a journal second to none. We want to keep it this way so **please** continue to support us with your membership.

## PUBLICATIONS

Recently some very interesting publications have appeared through the letter-box which I know will be of great interest to members.

Firstly from J. N. Sissons, a superbly produced Private Treaty list, amply illustrated and a handy work of reference. Some very fine early Pence Issues, Large and Small Heads and right though to the modern Inverted Seaway issue are, Newfoundland and the Provinces are not forgotten and the offers are enough to whet any demand.

From Mr. G. Drew-Smith, President of the Galt Stamp Club, has been received the first two Digests on Canadian Stamp Issues. These are very attractively published and each digest concentrates on a particular study. The two already received cover the Booklet Panes of the Admiral Issue, and the Booklet Panes, also of the Admiral Issues.

In future issues it is hoped that illustrations may add lustre to their appearance but even in their present state there is a mine of information to be gathered. Further details may be obtained from Mr. Drew-Smith, 28, Wentworth Ave., Galt, Ontario, Canada.

The present two digest are available at a cost of .75 cents each (\$1.00 by airmail).

Mr. Drew-Smith is to be congratulated on a very fine project.

### LONDON REUNION

As intimated in the last issue plans have now been formulated for another of these popular gatherings.

The meeting will be held at the Kingsley Hotel, Bloomsbury Way, London, W.C. on Saturday, March 17th, between the hours of 2.0—6.30 p.m.

The main display will be given by **Mr. W. E. Lea, Junior**, on the Small Heads of Canada and their associated cancellations..

There will also be the usual general display and an auction will be held to cover expenses incurred at the meeting. Mr. G. F. George, 40, Warwick Road, Coulsdon, Surrey, will be very glad to welcome voluntary lots and he would also like to hear from you if you intend coming.

Please ensure the success of the meeting by making a point to come along.

### E. ARNOLD BANFIELD

It is with deep regret that we have to announce the death of Arnold Banfield.

Arnold has been a keen supporter of many philatelic societies showing an enthusiasm which gained him friendship with collectors all over the world. He never lacked vigour and energy and often he would work late into the night either on his stamps or writing his philatelic correspondence.

His great interest lay in the 10 cents Consort stamp of Canada which also resulted in the accumulation of much historic material concerning the Prince Consort himself. His displays have gained him many awards including a silver gilt at the London International Exhibition in 1960.

He was always on the lookout for good material and he will be long remembered by his friends for his cheerfulness, generosity and good humour.

To his widow and family we send our most sincere sympathy.

G. W.

# CANADIAN NATIONAL PHILATELIC EXHIBITION

WINDSOR, ONTARIO, May 3—5, 1962.

The Committee for the Canadian National Philatelic Exhibition, "CANPEX" have been most fortunate in obtaining ideal accommodation and facilities for presenting an important exhibition and convention in the new Cleary Convention Hall at Windsor, Ontario, on the occasion of the 34th Annual Convention and Exhibition of the Royal Philatelic Society of Canada. "CANPEX" will be staged under the General Chairmanship of Dr. N. O. Boyd of Windsor with the Windsor "Y" Stamp Club acting as hosts to the Convention.

The Cleary Convention Hall is situated in the heart of downtown Windsor on Riverside Drive overlooking the Detroit skyline and is convenient to the main shopping area and within easy walking distance of downtown hotels. It has parking facilities for 1,200 cars. The Exhibition Committee is planning to present one of the most important exhibitions ever to be held in Canada and it is anticipated that the quality of the material on display will be of a very high standard. More than usual security arrangements have been made. Exhibits will be received by and stored in the vaults of the Canada Trust Company in Windsor until mounting time when they will be transferred to the Exhibition Hall under armed guard, where they will be mounted under the personal supervision of Fred Jarrett, R.D.P., F.C.P.S., F.R.P.S.C., of Toronto who has consented to supervise the mounting of the exhibition. A constant twenty-four hour guard will protect the exhibits while they are on display.

A number of other Societies are arranging to hold special meetings at Windsor in conjunction with "CANPEX" at this time and already the following societies have intimated that they will hold special gatherings at this national convention. The Canadian Philatelic Society of Great Britain, following the successful gathering at the Royal Philatelic Society of Canada's Convention at North Hatley last May, which was attended by over 50 members of this British specialist society, will hold a meeting of its Canadian and American fellows and members at Windsor. The President of the Society, Sir George Williamson of Aberdeen, Scotland, will be coming over to Canada and will attend the Convention.

The Philatelic Specialists Society of Canada will also hold a meeting in Windsor, being their first gathering ever to be held outside of Toronto and the Peninsula State Philatelic Society of Michigan will also hold a special meeting at the Convention. Several other societies are planning to arrange special meetings of their members at Windsor at this time.

A Prospectus will be published in January giving full particulars of the exhibition. The Exhibition Committee report that they have already received the assurance of the active participation of many of the leading philatelists in North America. A special invitational Court of Honour limited to a selection of the classical issues of Canada is also being arranged. There will be an extensive Bourse and a brochure is being prepared giving full particulars of the space available.

The official catalogue of the exhibition will be available on the opening day and also by mail from the General Chairman, Dr. N. O. Boyd, 1175 Kildare Road, Windsor, Ontario, to whom all correspondence concerning "CANPEX" should be addressed.

Ideally situated across the river from Detroit, with a population of over three million within a ten mile radius, it is confidently expected that "CANPEX" will draw to Windsor one of the largest crowds of philatelists ever to assemble in Canada.

---

## *Subscriptions now due*

If you require a Bankers' Order, please contact the  
Treasurer now.

CONSTANT VARIETIES OF THE  
1868 ISSUE OF CANADA

The fifth article in a series by Horace W. Harrison  
B.P.S., B.N.A.P.S., R.P.S.C., C.P.S., of G.B.

The 12½c. Value                      24,300 Plate Impressions                      1868—1887

**Figure 1**

Illustrates the well known variety, found at plate position No. 67, of the outer frame line missing from the left value tablet. This has been noted on a plate proof, and is probably the result of a poor transfer when the plate was originally laid down.

**Figure 2**

Shows the companion variety, plate position unknown, of the outer frame line missing from the right value tablet. This variety is probably the result of some damage to the plate and probably occurred around 1872. One copy has been observed dated September 9, 1873; and all copies examined so far are in the milky blue shade which first appeared in the spring of 1870, probably amongst the fourth order of December 17, 1869. Note that this variety has a prominent dot in the margin just beyond the upper end of the slant sign in the value tablet.

**Figure 3**

Denotes a flaw in the vignette frame under the "PO" of Postage. The drawing is rather poor, but the flaw stands out prominently once you know where to look. This has been observed on the vertical wove paper characteristic of the Bothwell Wmk. paper used in the fall of 1868, so the damage occurred quite early in the life of this plate. Position unknown.

**Figure 4**

Indicates the approximate shape of the flaw in the "A" of Half. It is believed that this flaw occurs on all printings of this value.

**Figures 5, 6, and 7**

Denote the locations of prominent dots in the numerals of the right value tablet. These flaws occurred rather early in the life of the plate, but the exact positions are unknown.

**Figure 8**

Illustrates the "balloon flaw" in the lower left margin. This minor plate damage is thought to have occurred in late 1868 or early 1869. Plate position unknown.

**Figure 9**

Shows the location of a position dot in the lower right margin. It has been suggested that this is either plate position No. 10 or No. 100, where the siderographer began his operation in laying down the plate, but no definite position has been established.

12½¢



FIG. 1.



FIG. 2



FIG. 3



FIG. 5



FIG. 6



FIG. 4



FIG. 7



FIG. 8



FIG. 9

*Don't forget the London  
Re-union*

KINGSLEY HOTEL,  
Bloomsbury Way,  
London, W.C.

*March 17th, 1962*

2.0 to 6.30 p.m.

A SUPERB COLLECTION

of

# CANADA

offered on the instructions of

**EVERETT A. BLAUVELT, Esq.**

**OF TAHOE VALLEY, CALIFORNIA**

will be Sold by Auction

on

**FRIDAY, 16th MARCH, 1962**

commencing at 2 p.m.

Lots on view on Thursday, 15th March from 10 a.m. to 5 p.m.  
and on the Sale day from 10 a.m. to 1.30 p.m.

The collection comprises the rare essays and plate-proofs and  
the issued Stamps from 1851 with many splendid examples of  
the nineteenth Century and subsequent issues.

Send for de-luxe, fully illustrated catalogue, 2/6, post free.

## **HARMER, ROOKE**

**AND COMPANY, LIMITED**

**2 ARUNDEL STREET, STRAND, LONDON, W.C.2**

Telephone: TEMple Bar 7941 : Telegrams: Philators, Estrand, London

Cables: Philators, London, W.C.2.



# LETTERS TO THE EDITOR

## "SOS" CANCELLATION

Dear Sir,

I refer to the letter to the Editor on page 10 of the October 1961 Edition concerning the cover bearing the strike, "SOS to Canada".

During the Second World War a member of the Canadian Army might have been returned to Canada for any one of a number of reasons. In accordance with the normal procedure, he would proceed from his unit (e.g. 5th Anti Tank regiment, Royal Canadian Artillery), to a hospital, a reinforcement unit etc., in the United Kingdom, thence he would go to 1 NETD (No. 1 Non-effective Transit Depot) where he would remain until a draft could be readied for return to Canada by ship or plane.

Each major unit of the Army had one or more postal orderlies who were kept informed of any departure of unit personnel and were responsible for forwarding mail as required to them.

The cover accompanying Mr. Anderson's letter indicates that the addressee had been S.O.S. (struck off strength) 5th Anti-tank Regiment and posted to 2 C.A.R.U. (2 Canadian Artillery Reinforcement Unit) in the U.K. By the time the letter reached there, the soldier had been moved on to 1 N.E.T.D. It was then re-forwarded but again missed the addressee who must have been lucky in getting placed on an early ship or plane to Canada. The letter was accordingly returned to the sender by the postal orderly at 1 N.E.T.D.

As re-forwarding directions were placed on letters by postal orderlies operating in accordance with instructions and equipment issued to them by the Canadian Postal Corps, strikes such as "SOS to Canada", "Return to Sender", etc., are definitely military postal cancellations. The two World Wars have produced a fairly large variety of such cancellations and an interesting military postal history collection can be made of them.

Yours very truly,

R. H. Webb, 1041.



## MONTREAL NUMERAL DUPLIX CANCELLATIONS

Dear Mr. Woods,

For some time I have been trying to obtain information relative to Montreal numeral duplex cancellations in use during the First World War 1915 to 1918.

Jarrett lists these under No. 180 in his record of numerical cancellations as follows—"Numerals 1 to 9 designating Montreal sub offices 1917 all georgian stamps".

From what information I have the numerals in use were Nos. 1 to 13 and covers indicate that the Montreal Post Office only made use of these cancellations.

The numerals were definitely not time markings and one can assume that they were "numbered hammers". In regard to this mention may be made that No. 5 is quite rare and Nos. 10-11-12 and 13 are scarce. Possibly No. 5 may have been lost or mislaid and the higher numbers were probably added to cope with the volume of mail to be handled.

Some reader of Maple Leaves may have information to confirm these comments and cancellation collectors doubtless will find these and other 20th Century markings of interest.

W. M. C. Willcock (599)

# CANADIAN FORCES MAIL

## GROUP III

### MILITARY/NAVAL POST OFFICES (Contd.)

by Lt. Col. R. H. Webb

By 1950, it became apparent that the facilities offered by the civil postal authorities were inadequate to meet all the needs of the Armed Forces situated as they often were, in rural and remote areas and overseas. After protracted negotiations between the Department of National Defence and the Post Office Department, an agreement was made whereby the CPC became a corps of the Regular Army on 1 Nov '50 and given the responsibility of operating a military postal service for all the Armed Forces at home and abroad at locations where civilian facilities were non-existent or inadequate. Since then, this service has grown extensively until it now embraces a base post office, several MPOs at Army and RCAF stations, a postal tracing section, fleet mail offices, ship post offices (HMCS Naden and HMCS Stadacona), unit mail rooms and the overseas CAPO/CFPOs. At the same time, a new code for identifying MPOs was adopted, based on the five geographic commands of the Army which had replaced the former military districts.

Command	Military Districts Replaced	New MPO Numbers
Eastern	6, 7	100, 101 etc.
Quebec	4, 5	200, 201 etc.
Central	1, 2, 3	300, 301 etc.
Prairie	10, 12	400, 401 etc.
Western	11, 13	500, 501 etc.

Note: On 1 Sept '59, Prairie Command was absorbed into Western Command.

The first MPO established under the new regime was No. 500 at Camp Wainwright, Alta, opened on 1 June 51, to serve the Army reinforcement group for the Canadian Forces serving in Korea. The expansion of the Armed Forces consequent to Canada's participation in UN operations and in the North Atlantic Treaty Organization, resulted in the opening of several more MPOs to serve mostly RCAF stations but also to serve Army formation during summer or winter manoeuvres. It will be recalled that the Cdn "contingent" for Korea concentrated at Fort Lewis, Washington in the late autumn of 1950 and it might be pertinent to add here that no MPO or CFPO was opened at that location. Personal mail was handled through the civil post office at Tacoma, while official mail was trucked to the Base Post Office, then operating at Vancouver, B.C.

### POSTAL CANCELLATIONS

Type 3.01—Location indicated by number only.

a. Circular date stamps





1



2



3



4



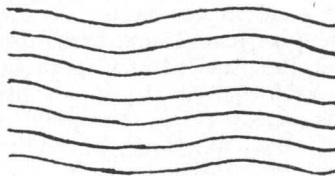
5



6

Description	Dimensions		
	Circle	Letters	No. of bars
(1) 'Military Post Office' in full	23 or 24mm.	3½mm.	-
(2) as for (1) but no separating dots and 'NO' instead of 'no'	24 mm.	3½mm.	-
(3) as for (1) with duplex	23mm.	3½mm.	7
(4) 'MPO' or 'NPO'	23 or 24mm.	3½mm.	-
(5) 'MPO' or 'NPO' with duplex	23 or 24mm.	3½mm.	7
(6) 'FPO'	24mm.	3½mm.	-

- NOTES: 1. Width of letters of 'NPO' in varieties 4 and 5 may be found to measure 2, 2½ or 3mm.  
 2. Variety 6 has been included since the two POs concerned are identified according to the MPO/NPO numbering system.



**b. Machine cancellations**

Description	Dimensions		
	Circle	Letters	No. of bars
(1) 'NPO'	22mm.	2½mm.	7—55mm.

To be continued

**DUPLEX CORNER**  
**PORT HOPE CORK DUPLEX**

By E. A. Smythies, C.I.E., F.R.P.S.L.

On page 23 of the Duplex Handbook I described five cork insertions, dated between October 1869 and April 1870, in the Port Hope duplex, and three of these were illustrated in plate VIII. The note in the handbook ended with the following remark: "Whether there were any further changes is not known at present, as the available evidence stops there."

Now a sixth change has turned up, on a cover dated April 11 1870 tying a very deep shade of 3c. Indian red. The strike is a bit smudged, but the letter H can be seen (possibly standing for Hope?). This is illustrated below, and also the two inserts which were not illustrated in the handbook for lack of room.

If any reader of this note has a specimen of the H insert, I shall be very grateful for details of it.

E.A.S.

The subjects of seven new postage stamps to be issued in 1962 were announced recently by the Postmaster General, the Honourable William Hamilton. Of the seven new issues, four will be commemorative and three will form part of the regular issue of stamps.

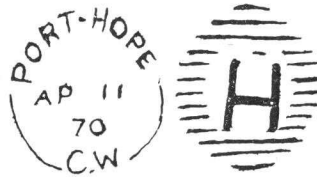
The four commemorative and special issues will all be of the five cent denomination, and the first will be to emphasize the role of Education and its importance to the individual and to the nation. The Provincial Education authorities have designated 1962 as "Education Year," and are planning extensive programmes to be initiated during the year.

In 1812, Lord Selkirk founded the Red River Settlement where the metropolis of Winnipeg now stands. The second stamp will commemorate the one hundred and fiftieth anniversary of the founding and will serve to focus attention on the exploration and development of the Western Plains.

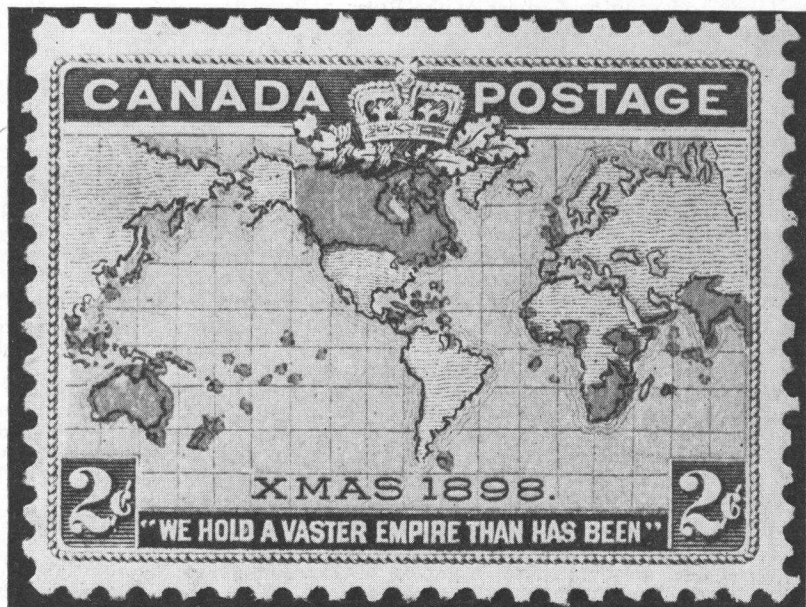
A further issue in the series of stamps honouring explorers and founders will feature Jean Talon, first Intendant of New France.

Another in the Provincial Capital Series will appear to mark the Centennial of Victoria, the capital of British Columbia. Two previous stamps in this series were the 1949 issue for the two hundredth anniversary of the founding of Halifax and in 1958, a stamp commemorating the 350th anniversary of the founding of Quebec, showing Samuel de Champlain, the founder of the city.

A one dollar stamp of new design, but part of the regular issue, will appear during 1962. Canada, as a great international trading nation, will be the subject of this stamp. Two of the new series in the one to five cent denominations also will be distributed during the year. As is traditional in Canada, this series will portray Her Majesty, Queen Elizabeth, but will use a new portrait set in an original design.



# CANADA THE 1898 MAP STAMP



*Have you ordered your  
copy yet, of our  
Second Handbook?*

The subject being the 1898 Map Stamp, the Author, Frederick Tomlinson, F.C.P.S., is well known for his studies on this fascinating issue. The contents are right up to date and the Handbook is profusely illustrated. An ideal guide to the beginner and specialist alike. Copies are now available from the Editor at 12/6 each (\$2 00) post paid. Order your copy now and **Please make all remittances payable to the CPS of GB.**

# ESCOPEX, 1962

The Edmonton Stamp Club is holding its Second Annual Exhibition—ESCOPEX '62—on March 16th and 17th, 1962, in the Corona Hotel, Edmonton. The Exhibition held in the Spring of 1961 was such an outstanding success that it was decided that this should become an annual event.

We attach a copy of the Rules & Regulations governing Exhibitions held by our Club and would ask that you draw them to the attention of Club members or collectors, who would be interested in an exhibition of this type. Requests for entry forms and additional copies of the Rules & Regulations plus any questions you might have in connection with ESCOPEX '62 should be directed to:

Mr. Jack Goodall,  
Exhibits Manager,  
13068—124th Avenue,  
EDMONTON, Alberta.

We are planning a first class show with an International flavor and believe real competition can be expected in every class. Last year some 600 pages from over fifty exhibitors were on display and we expect to better both marks this year. The award winners in ESCOPEX '61 give an example of the competition that could be expected. The Gold Medal was won by Mr. Louis Lamoureux with his French exhibit of the 10 Centimes "Red Sower", while the Silver Medals went to Mr. Frank S. Evans of Sedro-Woolley, Washington, with his 19th Century study of B.N.A. issues, and Mr. Edmund A. Harris, Edmonton, for his exhibit on Postal History.

An added feature this year will be availability of colorful cacheted covers and an official slogan cancel for the event. The Edmonton Stamp Club will provide service on these for out of town collectors unable to attend.

We would like to suggest that collectors who are planning entries for Canpex, Centrex, or any of the other Spring shows, should use ESCOPEX '62 as a testing ground for their entries. Make your arrangements now to exhibit at ESCOPEX '62 and if it can be arranged, plan to visit the Exhibition and Auction yourself. We would like the opportunity of showing you our version of Western Hospitality. May we hear from you?

## **RULES and REGULATIONS FOR EDMONTON STAMP CLUB EXHIBITIONS**

### **1. ENTRY**

Entries are not limited to members of the Edmonton Stamp Club, but exhibits must be the property of the exhibitor, and must be so verified on the entrance form. Entries shall be limited to one in each class, and each entry shall not exceed six frames (24 pages). Regulation album pages only may be used mounted vertically in frames. Former Grand Award and Gold Award winners in a previous Edmonton Stamp Club Exhibition may not exhibit the same type of material, in the same class, a second time.

### **2. CLASSIFICATIONS**

#### **GROUP I—CANADA**

Class A—19th Century

Class B—20th Century

Class C—Specialized collections—(Registrations, Coils, Booklet panes, Officials, Covers, Postal stationery, Airmails, Revenues, Etc).

Class D—B.N.A. (Not included above)

#### **GROUP II—BRITISH EMPIRE (As Listed in Scott's Part I)**

Class A—Single Country or Colony

Class B—General

Class C—Any Specialized Collection

#### **GROUP III—FOREIGN**

Class A—U.S.A.

Class B—Europe (Single Country and/or Colony)

Class C—Asia and Oceania (Single Country and/or Colony)

Class D—Africa (Single Country and/or Colony)

Class E—Western Hemisphere (Single Country and/or Colony)

#### **GROUP IV—TOPICALS**

Class A—A thing (Horses, cars, boats, sports, etc).

Class B—Telling a Story (Histories, Biographies, Religion, Anthology, etc).

Class C—Thematic Issues (Europa, Rotary, Marion Year, Geophysical Year, etc).

## GROUP V—SPECIALITY COLLECTIONS

Any collection not otherwise provided for. This basically covers collections that cut across dates and boundaries such as World Wide Perfins, World Wide Booklet Panes, Postal History, etc.

## GROUP VI—JUNIORS—16 OR UNDER

Any subject.

A Display from any Club, Society, or where more than one person is involved, will be exhibited in a non competitive class. This also includes exhibits by invitation.

### 3. AWARDS

There shall be no awards other than those approved by the Permanent Exhibition Committee. Awards available for presentation shall be:

**Grand Award**—A Silver Tray Suitably Inscribed.

**Gold Award**—A Medal of Gold-filled Metal Suitably Inscribed.

**Silver Award**—A Medal of Silver Plated Metal Suitably Inscribed.

**Bronze Award**—A Medal of Bronze Metal Suitably Inscribed.

The maximum number of Club Awards to be presented shall be 10, and may include 1 Grand Award, 1 Gold Award, and 2 Silver Awards. If, in the opinion of the judges, the calibre of exhibits does not warrant the presentation of the senior awards, or the presentation of 10 awards in total, the number and type of medals awarded may be reduced to the number the judges consider reasonable. Every effort will be made to present one award in each group.

### 4. JUDGES

There shall be four Judges who shall be selected by the Permanent Exhibition Committee. Judges shall vote awards from the above groups sanctioned by the Edmonton Stamp Club, and in case of a dispute, the President will cast the deciding vote. An exhibitor shall not be permitted to judge any class in which he is exhibiting. Decisions and rulings of Judges are final.

### 5. JUDGING

Exhibits will be judged on the following basis:

Philatelic Knowledge .....	35%
Coverage and Completeness of Subject .....	25%
Writeup and Presentation .....	25%
Condition .....	15%

### 6. GENERAL

The safety of an exhibit is the responsibility of the owner and no liability whatsoever shall be attached to the Edmonton Stamp Club, its officers, or members for loss or damage of any kind. The signature of the Exhibitor on the Entry Form indicates and attests to the acceptance of these Rules and Regulations.

## CANADA POST OFFICES SEALED PLASTIC PACKAGES OF POSTAGE STAMPS

Attractive, transparent, sealed packages of postage stamps to sell for one dollar each have been distributed for sale from all Canadian post offices. These packages are also available from the Philatelic Section of the Department, Ottawa. The packages are a new service feature, an original Canadian innovation and they will be available from post offices for sale throughout the year. These packages are convenient to carry in one's pocket or purse and the stamps, after the package is opened, remain clean and unsoiled.

One type of package contains a block of twenty 5c. regular issue stamps and another type contains two blocks of

twenty-five 2c. stamps. Each package sells for \$1.00.

Plastic bags are filled with stamps by the Post Office Department. In addition, the Canadian Bank Note Company, Limited, is supplying packages that are slightly different in method of sealing and wording from those prepared by the Department. The blocks of stamps in each package have unperforated, straight edges on all four sides. The Bank Note Company's style of package can be identified by the perforated edge and heat sealing on four sides. The Post Office Department package is heat sealed on one edge only with a notch for opening. Philatelists may wish to order one or both denominations of these packages now available from the Philatelic Section, Post Office Department, Ottawa.

Director of Financial Services.

## Amendments to Membership to 9th JAN., 1962

### New Members.

- 1375 McQUADE, T., 173 East 91st Street, New York 28, N.Y., U.S.A.  
C,N  
1376 BOOTHE, G. B., 3202 W. Concord Way, Apt. 465, Mercer  
Island, Washington, U.S.A.  
1377 WARMAN, C. H., 22 Charles Ave., Grimsby, Lines.  
1378 THOMAS, R. L., 23 Ashbourne Dr., Islington, Ont., Canada BL  
1379 GRACE, J. P., 194 McDonnel St., Peterborough, Ont. Canada

### Deaths.

- 667 E. A. Banfield.  
1291 T. B. Elliott.  
96 L. S. Holmes.

### Removed from Membership under Rule 24.

- 800 J. A. McCallum.

### Change of address.

- 914 BROWN, P. L., 21 Nelles Rd., South, Grimsby, Ont., Canada.  
1070 CARSTAIRS, Capt. M. W., Officers Mess, Bradbury Barracks,  
Krefeld, BFPO 34  
497 CANHAM, H. E., Suite 5, Sans Souci, 40 Gorge Rd., Victoria,  
V.I.B.C, Canada  
901 DORIAN, Miss A., 14 St. Andrews Rd., Ilford, Essex.  
1252 DUNCAN, J. J., P.O. Box 860, Revelstoke, B.C., Canada  
94 DUNCAN, R. J., P.O. Box 860, Revelstoke, B.C., Canada  
1320 FLETCHER, J. R., 29 Pennine Way, Bants Lane, Northampton.  
607 GREY, Sqn/Ldr P. R., Officers Mess, R.A.F. Luqa, BFPO 51  
668 HARVEY, J. D. M., 26 Upper Park Rd., London N.W.3.  
1104 KEMP, C. A., Apt 101, 10 Benevenuto Place, Toronto 7, Canada  
565 LISLE, F. B., 2 Waterside, The Promenade, Kingsbridge.  
963 PICKERING, I. T., c/o C. N. Perry, 6 Elmsleigh Gardens, Cleadon  
Sunderland  
1070 SHARPE, L. W., 47 Grant Blvd., University Gardens, Dundas,  
Ont., Canada

### Information required of new address.

- 971 G. B. Wright—late of Elliott Lake, Ont., Canada  
Net Change +1. New Total 824.