

MAPLE LEAVES

Journal of

THE CANADIAN PHILATELIC SOCIETY OF GREAT BRITAIN

INCORPORATED 1946

Founder:

A. E. Stephenson, F.C.P.S.

Edited by L. F. Gillam, F.C.P.S.

66, East Bawtry Road, Rotherham, Yorkshire

Opinions expressed in the various articles in this journal are those of the writers and are not necessarily endorsed by the Society

Published Every Second Month by the Canadian Philatelic Society of Great Britain

Issued Free to Members

Additional copies, 3/6 each

Vol. 13 No. 2

December, 1969

Whole No. 122

EDITORIAL

Occasionally, but all too infrequently, we receive letters from members which suggest lines along which we should work with a view to improving the content of *Maple Leaves* or widening its appeal. Such a welcome letter was recently received from Mr. C. D. Blair who suggests that 'appeals for contributions' are not specific enough. He goes on to venture the opinion that the authors of the many fine 'research type' articles which are published from time to time are the 'cannons' which tend to silence the 'pop-gun' contributors and that what is wanted are guidelines to help the latter.

We are certainly willing to supply these and would also wish to be able to share his optimistic assumption that it is ignorance of the technicalities of article presentation which deters members from taking the plunge into authorship rather than anything else.

Without being more specific than this we beg leave to doubt whether anyone is really deterred from contributing because he or she does not possess a typewriter, is uncertain how many words would be acceptable, or how to space them. Neither do we believe that anyone who is really burning with ambition to contribute to *Maple Leaves* is prevented from so doing because of ignorance of the ideal size for illustrations or because it is not known whether original material or photographs thereof are required.

If guidelines of this kind are required we can furnish them simply and in a very few words: providing handwriting is legible and illustrations are plain enough to serve the writer's purposes (i.e., the required detail can be seen), the rest can be left to us. In other words dear potential contributors you look after the writing, illustrating or photography and we will look after the publishing. It is as simple as that with the added qualification that the format of *Maple Leaves* (4¼in. typeface width) cannot be exceeded, at least without sacrifice to appearance. Illustrations which are less than that in width can be 'blown up' if necessary; conversely illustrations which are too big have to be scaled down by the blockmakers. This, of course, applies equally to photographs. One last word NO printing block can be better than the original illustration or photograph from which it is made.

So much then for our 'guidelines'. 'Pop-gun' contributors, potential cannons or what have you—all are equally welcome, and this we repeat with some hesitation since it has all been said (or implied) before.

When we come to the kind of article at which 'minor cannons' (we cannot resist this pun; it helps to relieve the grimness of editorial life!) might try their philatelic hands we encounter some difficulty. A number of contributors have helped in the past with 'introductory' articles of a general nature on various issues with a view to helping 'non specialists'. In this way the 'Maple Leaves and Numeral Issues', Edward VII, 1928–32, and the 1934 Cartier issues have been dealt with. They were, however, contributed by members who specialised in these issues and who were experienced writers. The type of article which they contributed may, however, point the way for those who wish to try their hands at philatelic journalism. In this way new contributors might well be as able to help those of our members who do not claim to be specialists and for whom introductory 'general' articles on specific issues, or stamps, would be of interest. In addition it may be as well to remember that postmark and postal history articles of the type which have recently appeared in our columns would meet a demand which is undoubtedly present.

We are enclosing with this issue a brief questionnaire which has been designed to help those who may wish to contribute articles but who are uncertain as to the type of article which may be acceptable and which would serve the most useful purpose to members. If there is sufficient response we shall then be able to publish details of the kind of articles at which new contributors might like to try their hands.

A FEW MINUTES SPENT IN ANSWERING THE ENCLOSED QUESTIONNAIRE WOULD BE OF CONSIDERABLE HELP TO US AND TO THOSE OF OUR MEMBERS WHO WISH TO CONTRIBUTE USEFULLY TO OUR JOURNAL. PLEASE SPARE THOSE FEW MINUTES AND A FOURPENNY STAMP AND SEND THE COMPLETED QUESTIONNAIRE TO YOUR EDITOR. THANK YOU.

president's message

My first words, as your President for the ensuing year, are very sincere, when I say 'Thank you'; not only for the honour you have now conferred upon me, but also for the seventeen years I have enjoyed as a member of our Society.

It was not until 1958 that I plucked up sufficient courage to attend the Convention held at Eastbourne and to meet the experts, but my wife and I were soon at ease and quickly appreciated the good humour and repartee. May this spirit of Stevie remain with us at all our Conventions.

The friendliness and good humour continues and at Harrogate we, in our turn, were delighted to meet some venturesome newcomers. Although Harrogate lies on a ridge of volcanic disturbance, the Convention atmosphere was quite relaxed; this, of course, was due to Eric's quiet efficiency and perhaps somewhat helped by the Spa Water which 'mitigates nervous exhaustion from worry and overwork'. To Eric and his helpers it should only be necessary to quote the Yorkshire expression 'luvly'.

While on the subject of Conventions I feel I should say that it has proved very difficult to arrive at a decision with regard to our next venue, particularly as some of our members wished it to take place at the same time as 'Philympia 1970'. Our main difficulty was that so many of our members were either taking active parts or full time duties at the Exhibition that they would be unable to attend our Convention, even if it was held in or near London at the same time. It was eventually decided to return to Eastbourne for the 7th to 10th October 1970, and our 'man on the spot' is Dorland Carn who has kindly agreed to deal with the bookings for the Burlington Hotel.

It is hoped that, by fixing the date of the Convention shortly after 'Philympia'—allowing the 'necessary breather' in between—some of our overseas members will be able to stay over, but for the benefit of those unable to do so, a 'Get Together' is being arranged during Philympia and Mr. O. H. Downing, the Chairman of our London Group, hopes to fix up a suitable time and place.

Full details as to the 'Get Together' and the Convention will appear in future issues of *Maple Leaves*.

Members are, of course, aware that the well being of our Society depends on the constant supply of new members and we very much appreciate the contribution made by our friends in Canada and the U.S.A. Having made some 'market research', I believe that many new members would be obtained if there were more local Groups. While we all know that *Maple Leaves* on its own, is well worth the subscription, many collectors appear to be only interested in joining a Society when there is an opportunity for regular personal contact.

I shall be pleased to hear from any member who would like to undertake the formation of a new local Group and as I have been Secretary of the London Group for several years, I may be able to help in some way. I am, of course, always at your service, so please do not hesitate—just write to me.

My wife joins me in sending to you and your families our most sincere good wishes for a Happy Christmas and a prosperous New Year.

BILL WILLIAMS

Memorial to the Society's Founder A. E. Stephenson

It was decided at the Annual General Meeting that a fund would be set up to provide a President's badge of Office as a Memorial to 'Stevie'. This will take the form of the Society's badge as used on the cover of *Maple Leaves* which will be suspended from a ribbon, and which will be worn by the President on formal occasions. The precise finish of the badge will naturally depend on the response to this appeal and it is suggested that donations should not exceed 10s. or \$1.50. It is hoped that this form of a memorial to 'Stevie' will appeal to all those who met him in person and those who have enjoyed any of the Society's facilities which were initiated by him, by founding it.

Members are asked to send their contributions to the Assistant Treasurer, A. F. L. McGregor, 339 North Deeside Road, Cults, Aberdeen AB1 9SN.

In the event of the amount necessary for the purchase of the badge being exceeded, any surplus will be used by the Committee within the Society for the furtherance of B.N.A. philately in any appropriate manner.

Enlarged Stamp Prints

The Secretary still holds supplies of enlarged stamp prints for illustrating varieties etc. as follows:—

- 3 cents small queen.
- 2 cents and blank 'Numeral' in pair.
- 2 cents and blank 'Edward' in pair.
- Blank value 'Admiral'.

Until the present supplies are exhausted the price including postage is:—

- 40 (20 pairs)—5s.
- 100 (50 pairs)—10s.
- 250 (125 pairs)—£1.

These may be mixed as required. If the demand warrants it, the production of prints of other stamps will be considered.

Message from Eric Bielby (Immediate Past President)

I would like to thank the many members who wrote to me following Convention, expressing their thanks for an enjoyable time. I was very pleased that my inexperienced and hard working team, and I, were able to maintain Convention at the high standards of the past.

I feel that I should mention a letter which I received immediately after Convention. This was from Mrs. Mary Willan, who wished us all a happy Convention this year. She asked to be remembered to all her old friends, and reminded me that she had many happy memories of the enjoyable times she and Doc. Willan had with us at Convention. She hopes to join us again at some future Convention even for a short stay. I am sure that we will all look forward to that day.

I regret to tell you of the news recently received from Mr. L. D. Carn, that Mrs. Carn passed away on the 24th October. I am sure that you would all wish to join me in expressing our sympathy to Mr. Carn at this time.

Mrs. Carn was a regular attender at Convention along with Mr. Carn, and they were both at the recent Convention in Harrogate.

I feel that in her passing the Society has lost a very faithful supporter and I have lost a dear friend.

J. E. BIELBY.

*S. Cockburn & Son Ltd., the Printers of your journal,
send you all the Compliments of the Season. We are
always at your service at Station Road, Ossett, Yorks.
Telephone Ossett 3077.*

ALL of CANADA Service

FROM

NORMAN TODD

74, LINDEN RD.
BOGNOR REGIS

NEWEST

BILESKI Plate Block Cat. 1969 24/- post paid
Canada Basic Cat. 1969 24/- post paid

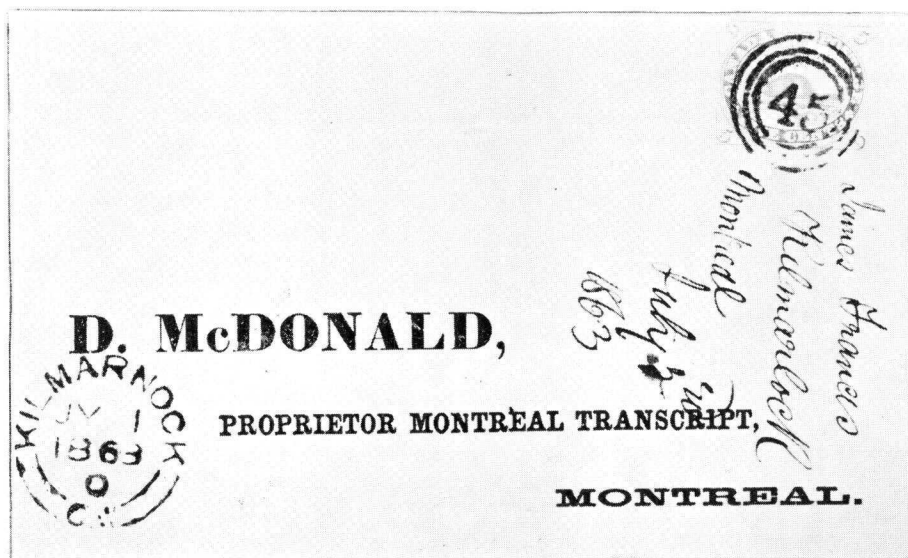
not so much a postage stamp
. . . . more a way of franking

by
S. F. Cohen, F.C.P.S.

Part XII 'MORE UNUSUAL NUMERALS'

One of the less spectacular but none-the-less exciting pieces from the recent Glassco collection Sale is the 1863 entire from Kilmarnock, C.W., dated 1st July 1863 and backstamped Montreal, 3rd July 1863.

The cover carries a 5cts. Beaver, obliterated and well tied with a hitherto unrecorded strike of '45' in three rings. The figures are larger than the official 2-Ring and smaller than the average 4-Ring types. The mark has all the looks of an authentic official type and not that of an unofficial and locally made device (*see below*).



The '45' of Stanstead in the 4-Ring range is completely different, and, it too, has some unique aspects. It certainly survived longer than any other in the series, for it is relatively common even on the small queens, which can be said of no other 4-Ring Numeral, and it has been found as late as the Jubilees. It is by no means so easy to find, though, on the early issues and Large Heads. It is struck in bright green, pale blue as well as black.

Small Queen Oddities

An extraordinary assortment of fancy type Numeral markings, hitherto unrecorded in the main, are now safely housed in the collection, as a result of rich pickings from the recent Glassco and Hicks Sales. Many of these were found in the mixed Lots of small queens and thanks are due to the auction describers for not having spotted them first and highlighting them.

Much as I would like to illustrate them all, this is not possible, so I will endeavour to describe the markings of some of them.

(1) 3ct. S.Q. with large intaglio '1' struck in bright green to add to the S/Day series 47/52.

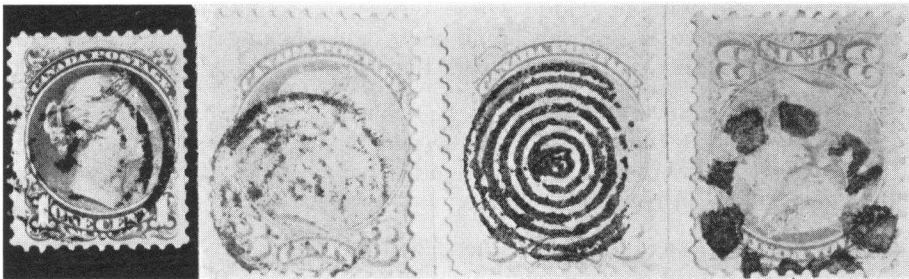


Fig. 1

Fig. 2

Fig. 3

Fig. 4

(2) 1ct. S.Q. Figure '1' surrounded by three concentric rings (*Fig. 1*).

(3) 3ct. S.Q. with very small figure '2' solid within 5 rings (*Fig. 2*).

(4) 3ct. S.Q. An even smaller, in fact a minute intaglio '3' in 6 concentric rings (*Fig. 3*).

(5) 3ct. S.Q. A geometric with '2' at right side centre. Could be Toronto new fancy type, but unlike any other I have seen (*Fig. 4*).

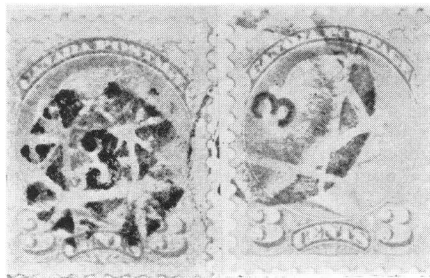


Fig. 5

Fig. 6

(6) 3ct. S.Q. Block of 4, of which one stamp only is illustrated (*Fig. 5*) at first sight looks like S/Day 46, the '3' in geometric design of Barkerville, B.C. (*Fig. 6*) This new one has a different surround of small triangles positioned to form squares . . . very neat.

(7) 3cts. S.Q. with block '99' or '66'; Large '10' with line under; '25' in irregular oval design; an '8' in what resembles a flag pattern; an unusual '20' solid as S/Day 64.

(8) 3cts. S.Q. More 'dates' in the S/Day 87/93 range including fancy 1881 in bright blue; clear large 1879 within a thick circle; 1895 with each figure set out in corners of stamp.

(9) 3cts. S.Q. Two very unusual figure '8's which are to the side and part of a larger c.d.s. obliterator. One is solid, the other intaglio '8. I am told that these are R.P.O. markings, but certainly new to me on small queens.

(10) A variety of earlier 'Paid' type *numeral* markings predominantly '3' '5', with and without 'Paid'. These types are straight line and also in circles. The variety is startling as all these truly belong to an earlier era and one would think that by the 1870's they would have lapsed into disuse.

(11) 3cts. S.Q. Several copies struck in black and also bright mauve of . . . 189? I don't think this one is a partial date (189?) but may be a Railway, as is also the '13' to be found attached to an RPO c.d.s. circa 1895, also struck in black and mauve.

I hope that these, and many others, will be eventually incorporated in some new edition of existing handbooks.



AT AUCTION—CHOICE B.N. AMERICA

Many of our clients are B.N.A. collectors and specialists and through our catalogues are able to obtain the fine properties which are scheduled for sale in our fortnightly auctions. If not on our mailing list NOW is the time to write for a subscription form. Reduced rates are available for B.N.A. collectors, and these include Prices Realised.

We will be holding a British America sale in the Spring, details of which will be found in our next advertisement. If YOU are thinking of selling NOW is the time to contact us.

**H. R. HARMER LTD. THE INTERNATIONAL
STAMP AUCTIONEERS**

41 New Bond Street, London, W1A 4EH

Telephone No. 01-629 0218

SINCERE GOOD WISHES

To ALL Members and their Families

We are looking forward to the pleasure of
meeting many old and new friends during

PHILYMPIA 1970

THE LONDON 'GET TOGETHER'

and at the

EASTBOURNE CONVENTION

(October 7th to 10th)

from

BILL and RUTH WILLIAMS

(When in London just dial 902-6442)



Alan McGregor

sends

Best Wishes

to all Members

for a

HAPPY CHRISTMAS

and a Prosperous

NEW YEAR



BEST WISHES

for

CHRISTMAS

and the

NEW YEAR

— **Heffie**

(As a result of my appeal
last year for the 'Gunner
Stamp Fund', ONE member
sent me some stamps—
Once again I ask for
your support)

Gifts to—

R. B. Hetherington

**104A BROADWATER STREET WEST
WORTHING, SUSSEX**

Thurlow Fraser the unorthodox philatelist

By JACK FISHER

By his own definition, our member Thurlow Fraser is not an orthodox collector. In a talk prepared for stamp clubs, he notes, 'The strictly orthodox collector is one who collects stamps from everywhere, sorts them patiently into countries, fits them into certain issues and mounts them in an album.'

Like his fellow members of the Columbia Philatelic Society and most serious collectors around the world, Thurlow does not collect from everywhere. In fact, an absorbing section of his hobby is not even concerned directly with stamps at all. But more of that later.

In the late '40s, Thurlow looked at stamps as a hobby for his sons. But while the boys turned their attention elsewhere, father found himself becoming increasingly interested. Joining a stamp club, he learned early to be satisfied with limited areas of collecting. Even so, he started work on a collection of Canadian issues, broadening it to include other parts of the Commonwealth. He is also a collector of Danish issues, the United Nations, and has a special interest in wartime stamps from the Channel Islands.

Reading a magazine on stamp collecting one day many years ago, Thurlow learned about railway post office cancellations. These travelling post offices, in British Columbia at least, used certain marks, called ornaments, to identify the individual clerks. This led to Thurlow's collection of ornaments that is reproduced opposite.

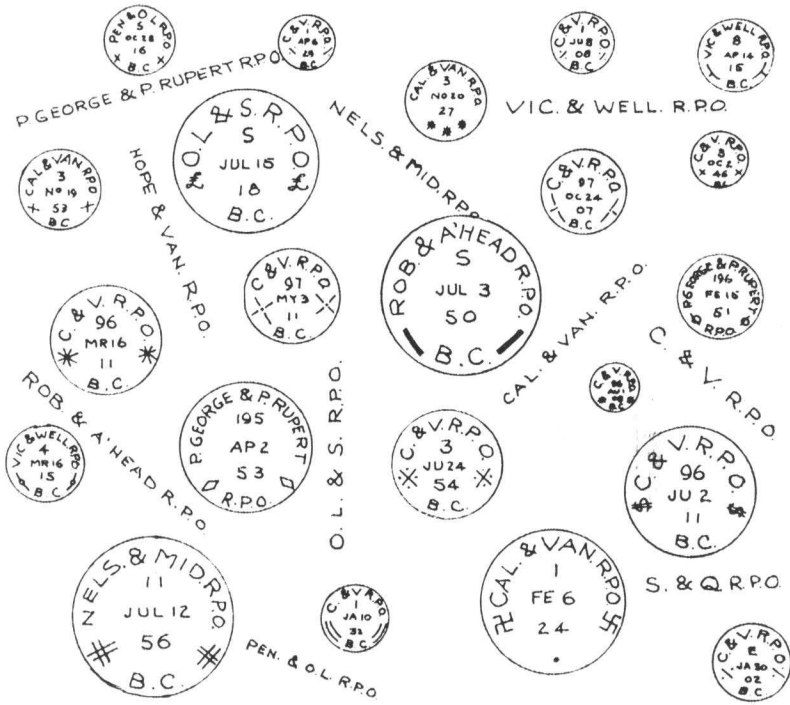
From British Columbia railway post offices to small community post offices in the Kootenay and Boundary country was a logical step, as many of the post offices were established on railway lines. In this field Thurlow has developed a history of the area through its post office cancellations. Such largely-forgotten names as Myncaster, Alamo, Cody, Brooklyn, Anaconda and Porto Rico were once places on the Kootenay map with their own post offices.

'There used to be five sub-post offices in Trail alone,' said Thurlow, 'and I still have to find some samples of their cancellations. I'm also on the lookout for such names as Paterson, Camp McKinney, Deadwood, Waterloo and even Beaver Falls, which had a post office until quite recently. But what would be really worthwhile finding would be a Fort Shepherd or a Trail Creek.'

Ontario-born, Thurlow has been with Cominco Purchasing in Trail since 1935, and is now a senior buyer. Serving overseas during World War II, he retained his interest in the Army and was appointed honorary aide-de-camp to Lieutenant-Governor George Pearkes last year. Accompanying the Queen's representative through the Kootenays, Thurlow found the conversation did not lag. 'You see, Mr. Pearkes happen to have quite a stamp collection, and . . .'

(With acknowledgements to the COMINCO MAGAZINE.)

RAILWAY POST OFFICE ORNAMENTS
OF BRITISH COLUMBIA



SOME OF THE ORNAMENTS

Jack Canuck II at Harrogate

The Convention was well supported by Members from 'Outposts of the country'—the Celtic fringe being well represented by Cornwall and Scotland, and a very welcome return by an exiled Celt from Uncle Sam's Country, in the form of Dr. Ian Taylor—and our ever faithful Herb Buckland.

On Thursday morning the ladies were seen driving off for a visit to a stately home—Rudding Park—but one driver confused by the occasion (or what have you?) was seen to drive 'OUT the IN' entrance.

Two very enjoyable excursions were undertaken though the weather was not very kind to us, on our visit to the Dales and Grassington, and on our return 'J.J.' led us to believe he had been leading a study group, but I suspect this was just another name for an afternoon snooze.

The excursion on Friday saw us in the Castle Museum in York which was obviously enjoyed by many, as members were seen rushing in to the Castle Post Office to purchase 'Id Blacks' and post them there!

Dr. Carstairs is thought to be lost. He was last seen talking to a prisoner in the Museum who had not sent back the Exchange Packet at the correct time!

In the evening after various displays and talks had taken place, many members were seen walking about in a daze armed with, albums, magnifying glasses and tweezers, though one of our Senior Citizen members, Mr. Bird, was seen to enjoy varied company, one moment at a display, the other surrounded by admiring ladies giving a display himself!

The Auction was again well attended and we hope it will be a benefit to the Society's coffers.

A most enjoyable evening was spent at the Banquet on Saturday evening with the usual feast of excellent speeches and the reading of a telegram by the President, from the Queen. The toast to the Ladies was again given by our Editor, Mr. Gillam, and ably matched by Mrs. Whitworth who proved that we ladies can get anything we want as long as it keeps us quiet while in the presence of the 'Holy Stamp'.

A fine interval entertainment was given to us by the Leeds Branch of the Royal Scottish Country Dance Society.

The final part of the evening saw about 6 members consuming Glenfin-glass whisky and asking a horrified waiter for water with which to dilute it.

Sunday morning saw the usual sad good-byes and a patient Mr. and Mrs. McGregor waiting to get their car out of the tangle in the car park. Are you both still there?

A Celtic-Trans-atlantic 'Caravan' was seen setting off for the North, but the last person seen was Heffie waving a forlorn hand as we all departed after four very happy days.

The
LONDON SECTION

*send all good wishes
for Christmas and
the New Year
to all members of
the Society*

O. H. Downing
— Chairman

**SINCERE
GREETINGS**
and
BEST WISHES
*To all Friends
Old and New*



from
L. D. CARN

*Christmas Greetings
to all
my friends
and
Good Hunting
in 1970*



J. J. Bonar

A Merry
CHRISTMAS
and a Happy
NEW YEAR



from
Leo Baresch
MANFIELD HOUSE,
376/9, STRAND,
LONDON, W.C.2

Canadian Airmail Notes

By Major R. K. Malott

Part VIII

LAURENTIDE AIR SERVICE

(Continued from Whole No. 119).

When the season first started, the service was operated from Angliers, Que., the terminus of the Canadian Pacific Railway line in the district direct to Lake Osisko, a distance of about 45 miles. It was then found that the railroad connections at Haileybury were better as well as the facilities for handling the machines. The Company therefore transferred their main base to Haileybury. Trips were made from there on the arrival of the through trains, one aircraft calling regularly at Angliers to pick up mail, telegrams, freight, express, and passengers en route every day and stopping on return for a similar purpose. At the Rouyn end, Lake Asisko was made the main base, though passengers and freight were delivered on the shores of any waterways in the district, as required by customers.

A contract for the transportation of the treaty money paying party, from the National Transcontinental Railway down the Albany river to James Bay, was entered into with the Department of Indian Affairs. This flight was carried out in the beginning of August by the Viking Lion amphibian in ten days, the flying time being about 12 hours. The distance covered was over 1,000 miles. The expedition started at Remi Lake, a few miles from Moonbeam station, proceeding north-west as far as Martin Falls on the Albany river, thence following its course to Fort Albany on James Bay, thence, north along the coast, to the mouth of the Attawapiskat river, then by the coast to Moose Factory and south again to railroad by the Mose, Metagimi and Groundhop rivers. The only alternative to making this expedition by air was to follow the canoe routes, which would have meant several weeks' hard travel by canoe.

The Company also carried out several contracts for forest type sketching in conjunction with the James D. Lacey and Co. of Canada, the largest of which was in the district of Algoma for the Spanish River Pulp and Paper Company, for whom similar work has been done in previous years. This sketch survey covered an area of 2,000 square miles of forest land. The following extract from a report by Mr. B. Avery, forester for the Spanish River Company, shows their opinion of the value of this work and gives an interesting comparison of the results of aerial sketching with ground cruising:—

'We use the aerial sketch method of survey for economy as well as for speed in obtaining required information. Although the ground work necessary to complete the report on the area surveyed has not yet been done, we are confident that we shall effect a saving of one-third of the cost of our regular 2½ per cent strip survey, by this method.'

The map gives us more complete information of the areas of watersheds, the location of lakes and type boundaries than we are able to obtain by our strip surveys, and although ground work is necessary to obtain an estimate of merchantable types and the size and density of unmerchantable stands this information can be obtained by sample plot surveys. Useless expenditure of time and money is obviated by knowing the location and extent of uniform types, previous to undertaking ground survey.

Of the area covered during the past season, two townships, one east and one centre, had been previously covered by a 2½ per cent strip survey. Through a comparison of the information given by the two methods we found some variations, but the variation was so slight that for our purposes the differences are negligible.

No. 1—

	Ground Survey Per cent	Air Survey Per cent
Water	12	13
Cut and burn	3	5
Timbered	85	82
	—	—
	100	100

No. 2—

Water	5	5
Cut and burn	35	29
Farm	1	1
Timbered	59	65
	—	—
	100	100

'We are very much pleased, not only with the information obtained but also with the excellent map and report submitted. We intend to continue the use of the aerial method of forest surveys.'

Work of the same nature was also carried out in the province of Quebec, including an operation in the difficult and mountainous country northeast of the city of Quebec, and another in the Upper Gatineau region. They also contracted to supply the flying required on one of the photographic operations for the Fairchild Aerial Surveys Company in northwestern Quebec.

The Company employed five licensed pilots and seven licensed ground engineers. Their total flying time for the year was 933 hours, miles flown approximately 66,000, and the number of flights, 894. The distribution of the flying time was: freight, mail, express, and passenger service, 516 hours; test and instruction 12; cross-country flights, 220; survey and reconnaissance, 127; photographic survey, 55; miscellaneous, 3. During the whole of this work no accident occurred involving injuries to anyone.

The airmail flights of this Company as listed in AAMS Catalogue Volume II, 1947 Edition are as follows:—

- (a) 11 September 1924. Haileybury—Rouyn and returns (AAMS Nos. 50 and 50b). Envelopes bearing this Company's first semi-official green stamp rouletted at the left are stated to have been flown on this flight but none are known to exist (AAMS Nos. 50a. and 50c). The pilot is listed as C. B. Cardinet, on whom there is no data available.
- (b) 3rd October 1924. Haileybury—Rouyn and return (AAMS Nos. 51 and 51a). Pilot C. B. Cardinet.
- (c) 17th October 1924. Haileybury—Rouyn and return. (AAMS Nos. 52 and 52a). Pilot C. B. Cardinet.
- (d) 21st January 1925. Larder Lake—Rouyn and return. Envelopes have a large oval cachet applied in purple, reading 'Laurentide Air Service Ltd. Air Mail Larder Lake—Rouyn. First Winter Flight 1924.' (AAMS Nos. 53 and 53a). Pilot W. Wiltshire who now lives in New York, U.S.A.
- (e) 22nd January 1925. Three Rivers—Rouyn and return. Envelopes have a large oval cachet applied in purple reading 'Laurentide Air Service Ltd. Air Mail Three Rivers—Rouyn. First Winter Flight 1924.' (AAMS Nos. 54 and 54a). Pilot H. L. LePot (now deceased).

Envelopes exist bearing later dates but are not first flights. Envelopes exist with a large rectangular cachet applied in green, reading 'Trans-Canada Flight 1925 Vancouver—Montreal'. These envelopes were intended for a flight which was cancelled. The reason for the cancellation is not known.

The date of the postmarks on the envelopes Nos. 53, 53a, 54 and 54a are most confusing and do not coincide with the indicated routes. Research in this area is being conducted by Mr. Daniel Rosenblat, 660 Hillsdale Road, San Mateo, California, U.S.A. Anyone having data on any of these flights is requested to contact Mr. Rosenblat.

Subscriptions (Overseas Members)

United States and Canadian members are asked to note that remittances of subscriptions to the Assistant Treasurer (Mr. A. F. L. McGregor) should be at the rates of \$3.80 and \$4.00 respectively. Remittances by Bank Money Order and Postal Drafts in Sterling, charges for account of the remitter, would help the Assistant Treasurer greatly. Subscriptions should be sent to him at 339, North Deeside Road, Cults, Aberdeen, Scotland.

The Stamp Advertiser

In our June issue a reviewer, commenting on the spate of new books on facets of philately, reminded us that 'of making many books there is no end.' He might well have added that the supply of new philatelic magazines is scarcely a trickle either. They all claim to be 'the new philatelic journal with a difference' although what the difference really is does not appear always to be immediately apparent. Not so with *The Stamp Advertiser*, however, issue No. 2 of which is just to hand by courtesy of the Editor, Mr. D. C. Stubbs of 31, Oxford Row, Leeds, 1. This really is different in so far as every issue is made up entirely of dealers' lists.

We should imagine that this is just what the doctor ordered as far as many collectors are concerned; for if philatelists do read anything it is certainly the advertisements in their favourite stamp magazine, if nothing else (and it very often is nothing else!).

Apart from Canadian new issues we notice nothing specifically attractive to our members in this issue, which is devoted almost exclusively to Great Britain, BUT since many will have at least 'a sneaking regard' for 'G.B. issues' there is no reason why *Maple Leaves* should not publish a reminder that the service of philately knows no bounds. Interested readers should write to the Editor, Mr. D. C. Stubbs at the above address when further information and possibly a specimen copy will be forthcoming. (Please enclose a stamped and addressed foolscap envelope.)




S.G. 04

We regret it was not possible to illustrate the larger and somewhat heavier overprint 'O.H.M.S.' about which Mr. Hetherington wrote in our last issue. We are now able to reproduce the variety (right hand stamp) together with the normal for comparison.

**CHRISTMAS
GREETINGS**
and Best Wishes
for the
NEW YEAR
to all Members



from
Eric Bielby


**Geoffrey and Constance
Whitworth**
Wish all Members
A
MERRY CHRISTMAS
and a
Happy and Prosperous
NEW YEAR



A
HAPPY
CHRISTMAS
and a
PROSPEROUS
NEW YEAR
to
Everyone

from
YOUR EDITOR

**CHRISTMAS
GREETINGS**
and
Best Wishes for
the New Year
to all Members



from
**Charles and Dorothy
Hollingsworth**

International Postcard Market

Within the last year or so a new venture in philatelic journalism has been launched under the above title. It is, as the name suggests, 'a magazine for the collectors of Picture Postcards.' Issue Number 6 which we received recently by courtesy of the Editor, Mr. J. H. D. Smith, marks the end of the first year of publication, a year which has undoubtedly been very successful.

So successful, indeed, it has been that as from issue number 6 ALL sales of postcards advertised will be by auction. As many as 10 requests for many of the items previously advertised have been received, a situation which has not made life any the easier for the organisers and inevitably has occasioned much disappointment to many collectors.

All this has no direct bearing on Canadian philately, of course, but we notice Canadian items from time to time and postal history items are also available frequently. The latest issue contains a collection of Canadian topographical cards (50) valued at 10s. and representing selected street scenes or good local views. THEY ARE UNUSED, however, but in search for collateral material items such as these should not be overlooked. They are not always readily available.

A request to the Editor, Mr. J. H. D. Smith, 94, Idmiston Road, West Norwood, London S. E. 27, will bring you a specimen copy of the magazine which (forgive the cliché) fulfils a long felt want.

If you feel like sending the annual subscription of 10s. at the same time there is little reason to expect that you will regret the expenditure.

Reminder

YEAR BOOK 1969-1970

Please check your entry in the Year Book which accompanies this issue, and notify the Secretary of any errors that may appear.

VOLUME 12—BOUND COPIES

An index to Volume 12 accompanies this issue: Copies for binding should be sent to:

S. COCKBURN & SON LTD.,
38, STATION ROAD, OSSETT, YORKS.

Price 44/- (post free).

CANADA 1851 - 1897

- | | | |
|-------|--|------|
| 1. | 1851. 3d. red/laid paper. Very fine horizontal pair on attractive cover to Buffalo in 1852. S.G.1. R.P.S. certificate. | £250 |
| 2. | 1852-7. 6d. greenish grey/wove. Superb used example of this stamp with large margins on all sides. Cancelled with grid cancel in black. S.G.13. | £115 |
| 3. | 1852-7. 6d. reddish purple. Very attractive used copy of this stamp on thick soft paper. S.G.17. R.P.S. certificate. | £110 |
| <hr/> | | |
| 4. | 1857. 7½d. pale yellow green. Attractive example neatly tied to cover by black grid cancellation. Rare. S.G.22. | £300 |
| 5. | 1857. 7½d. deep yellow green. Attractive, lightly cancelled example of this stamp. Scarce. S.G.22a. | £125 |
| <hr/> | | |
| 6. | 1857. ½d. deep rose. Imperf. Brilliant mint unmounted example with good to large margins on all sides. S.G.23. | £70 |
| 7. | 1859. 12½c. pale yellow green. Superbly centred block of four in mint condition. One stamp has a small tear but very rare in a multiple. Ex. Boyd Dale. S.G.40. | £225 |
| 8. | 1862. cover to Gibraltar from Montreal bearing 17c., 5c. and 1c. stamps to complete the 23 cent rate. Fine and very scarce. S.G.30, 31, 43a. (Ex. Codrington Corr.) | £200 |
| 9. | 1868-71. 2c. deep green. Mint horizontal strip of five. Slight crease but very rare in a mint multiple. S.G.56. | £200 |
| 10. | 1877. 15c. lilac grey. Fine used example of this stamp showing portion of the 'Pirie' script watermark. S.G.72a. | £110 |
| 11. | 1870. 3c. indian red. perf. 12½. Fine used example of this scarce perforation variety on neat cover addressed to Newport on the 11th April. S.G.83a. | £125 |
| 12. | 1870. 3c. pale rose red. Superb mint marginal block of four. Attractive. S.G.84. | £110 |
| 13. | 1893. 20c. vermilion and 50c. blue in fine mint block of four—the 20c. with sheet margin at left. S.G.115-6. Rare in multiples. | £135 |
| 14. | 1897. Jubilee set in fine mint condition, ½c.—\$3 bistre. Scarce lot. S.G.121-138. | £160 |

Write for illustrated brochure of other fine stamps we have in stock.

W. E. LEA
(Philatelists) Ltd.

1 Adelphi, John Adam Street, Strand, London W.C.2.

Tel. 01-930 1688/9

Canadian R.P.O's.

Addendum to Shaw's Handbook

Serial No.	Route	Type	Direction	Period	Rarity Factor	Reported By
W-26P	Cal. & Van. R.P.O. Serial No. of Despach Jan. 24, 1922	1E		128	200	107A
28H	Cal. & Van. R.P.O. S. D. Scherk	23F		390	100	32
-32A	Coronation & Lacombe	17A		135	200	16
-51C	Hope & Van.	17		129	200	107A
-51D	Hope & Van. R.P.O. Tr. 706 May 19 1928 Mead	22H		146	200	119
-60B	Jasper & Prince George	17		394	100	111
-61A	Kam. & N. Batt. R.P.O. No. 4	17B		129	200	107A
-62M	Kam. Sask. R.P.O.	6D		134	200	107A
-65B	Kirkella & Saskatoon	17D		197	200	107A
-66D	Lasqueti-Irvinnes Landing SDD. Fannicol	3D		134	200	107A
-70A	Mary & M. Jaw R.P.O.	6D		134	200	107A
-77E	Med. Hat & Nel. R.P.O. No. 11	6G		129	200	107A
-86B	Moose Jaw & Calgary	17A		114	200	16
-87T	M. Jaw & Cal. R.P.O. No. 12	18	W	108	200	107A
-91J	Moose Jaw-Shaunavon S. Rivers	7E		292	150	103
-91K	M. Jaw & Shaun. H. A. Miles	7E		274	150	103
-91L	M. Jaw & Shaun. R.P.O.	6D		134	200	107A
-91M	Moose Jaw Terminal R.P.O.	17	P.M.	105	200	107A
-97B	Nels. & Mid. R.P.O. B.C.	17F		129	200	107A
-100M	N. Batt. & Ed. R.P.O. D. Warkentin	17J		29L	150	103
-100N	N. B. & E. Tr. 5 Oct. 17 C. A. Scharff	22G		?	150	103
-102J	Nor. Port. & M. Jaw R.P.O.	6D		134	200	107A
-112F	P.G. & P.R. R.P.O.	6		134	200	107A
-112G	P. George & P. Rupert	17A	A.M.	143	200	107A
-115A	Reg. & Col. R.P.O. No. 1	6D		141	200	107A
-116I	Reg. & Gron. R.P.O. E. H. Kipper	7B		304	150	103
-115B	Reg. & Mel.	17A		241	200	107A
-122A	Regina, Sask. Despach	15E		390	150	16
-125D	Rev. & Van.	17		140	200	107A
-125E	Reston, Wolsley R.P.O. No. 1	17B		97	200	107A
-127I	Riv. & S'toon R.P.O. No. 4	177		358	100	107
-127J	Riv. & Sask. R.P.O. No. 4	6D		134	200	107A

(Continued from Whole No. 121)

NOTE: Reporters' Number 107A refers to postmarks in the Post Office Proof Book. There is no evidence that the postmarks have been brought into use although instances of actual usage on mail may subsequently be discovered.

*precancels on the
admiral issue*

**R. B. Hetherington and
F. W. L. Keane part VIII**

	MONTREAL	Precancel					
		Type 2	Type 4	Type 5	Type 6	Type 7	Type 8
1 cent green	Original die, 1912 Original die retouched, 1913	n a	n a b n a b c	n a b c	n a		
1 cent yellow	Original die retouched, wet, 1920 Original die retouched, dry, 1926 New die, dry, 1925		n n n	n a n a b n a	n a b n n	n n n a	
2 cents red	Original die, 1912 Original die retouched, 1913	n	n a c n a	n a c	a		
2 cents green	Original die retouched, wet, 1922 Original die retouched, dry, 1924 Original die re-engraved, dry, 1925 Thin paper, 1924		n n n	n a	n a n n	n n n	
3 cents brown	Original die, wet, 1918 Original die retouched, dry, 1922		n n		n a		
3 cents red	Original die retouched, 1923 New die, 1924		n		n a n	n n	
4 cents bistre	Wet, 1922 Dry, 1925		n a n a		n n	n n	
5 cents blue	Marler Type 1: Reiche Type 1, 1912 Marler Type 1A: Reiche Type 1a, 1913 (?) Marler Type 2: Reiche Type 2, 1914 Marler Type 3: Reiche Type 3, 1916		a n a n a	a			

5 cents violet	Marler Type 4; Reiche Type 1, 1922 ... Marler Types 5 & 7; Reiche Types 2 and 4, 1922-24 ... Marler Type 6; Reiche Type 3, 1923 ... Marler Type 8; Reiche Type 5, 1925 ... Thin paper, 1924 ...	n n a n	a	n n n	n n n
7 cents red-brn.	Wet, 1924 ... Dry, 1926 (?) ...	n a n		n	n
10 cents plum	Marler Type 1; Reiche Type 1, 1912 ... Marler Type 2; Reiche Type 2, 1920 ...	n a			
10 cents blue	Wet, 1922 ... Dry, 1925 (?) ...	n a	n		
20 cents olive	Marler Type 1; Reiche Type 1; wet, 1912 ... Marler Type 1; Reiche Type 1; dry, 1924 ... Marler Type 2; Reiche Type 2; dry, 1925 ...	n		n	n
50 cents black	Original die, wet, 1912 ... Retouched die, dry, 1925 ...	n		n	n
1 dollar orange	Wet, 1923 ... Dry, 1925 (?) ...	n		n	n n

BOOK REVIEW

Stamp Year Book 1970

(Pub: Link House Publications Ltd., Dingwall Avenue, Croydon, Surrey)

In February the reviewer of *Stamp Year Book 1969* suggested that for a modest sum of 7s. 6d. it was scarcely reasonable to expect a great deal, but that this publication was a notable exception. We shared this opinion at the time and wondered how it was possible to produce so much that was attractive and interesting to a wide range of stamp collectors and postal historians. And still the wonders grows. For the same price the publishers are to be congratulated on at least maintaining a very high standard previously set; although many would argue that this time they have improved upon what was then a superlative effort. To say that the 122 pages (excluding the semi-stiff covers) are packed full of interesting reading would be a well worn cliché and an understatement to boot. Both contributors and advertisers have undoubtedly set their stalls out with the object of compelling attention and in this they must have succeeded. Even your reviewer could not resist 'China' about which we knew nothing and cared less. This surely is the acid test of a publication of this kind: that it can open the eyes of the blinkered 'one country man' and not only make him sit up and take notice but make him sit down and read with rare attention and growing interest about wartime aerogrammes, philatelic literature, postmasters general of the past, varieties, thematics and so much else. The publishers *do not* promise 'your money back if dissatisfied'. They might well have very safely done so. If you want to give yourself a treat order now and if you can bring yourself to do so give it away as a Christmas present to *any* stamp collector, young or old, general or specialist. They will certainly thank you and you will be able to congratulate yourself that for 7s. 6d. you have two satisfied customers. We notice one thing, however. Why does the Canadian Philatelic Society of Great Britain, with 30 years of history behind it and 700 members all over the world, *not* deserve a mention among the long lists of 'Societies for the Specialist'? Here is something for our editor to do something about and if we may say so, 'something for the publishers to think about, too'.

Precancels on the Admiral issue

Readers are please asked to note that the details of the precancels on the Admiral issue published in our last issue refer to Moncton, N.B. We regret the omission of this heading from the article which appears on page 21.

Stamp Quiz

The Quiz which was used at the 1968 Convention is still available for use by local groups for their own meetings. It consists of 60 questions, together with the answers and will be sent on request to the Secretary.

A
MERRY CHRISTMAS
 and a
GUID NEW YEAR
T' ANE AN' A'



from
**Sandy and Marjory
 Mackie**



J. A. Grant
 sends
Good Wishes
 for
CHRISTMAS
 and
THE NEW YEAR



Philip Walker
 wishes
Everyone
A HAPPY
CHRISTMAS
 and a
Prosperous
NEW YEAR

HAPPY
HUNTING
 in
'70
 to all
C.P.S.G.B.
 and **B.N.A.P.S.**
Members



from
Stanley Cohen

C.P.S. of G.B. 23rd Annual Convention

EXHIBITION AWARDS

Convention Awards

Godden Trophy	G. Whitworth	1859 proofs
Bunny Cup	Dr. C. W. Hollingsworth	Montreal flags
Admiral Cup	A. S. Mackie	3 cents brown retouches
Members Trophy	J. M. Parkin	1930 issue
Aikins Trophy	S. F. Cohen	'Not so much a Postage Stamp . . .
Founders Trophy	H. W. Harrison	Cancels on Large Heads, Canada's Registration system

Diplomas

Class 1. Research and Study

1st. Dr. C. W. Hollingsworth	Montreal flags
2nd. E. A. Smythies	Crown, Way Letter and Jubilee Forgeries

Class 2. Groups

1st. London	Postmarks on Jubilee Issue
2nd. Kent and Sussex	Large Heads

Class 3a. to 1897

1st. G. Whitworth	1859 proofs
2nd. J. J. Bonar	Prestamp covers

Class 3b. after 1897

1st. E. Killingsly	Commercial Airway stamps
2nd. D. G. Robertson	Admiral War Tax stamps

Other entries were:—

Class 1.

J. L. Bacon	Study of File marks on Admiral Issue
J. Hannah	2 cents red plates 1-4
P. Walker	Newfoundland Pence
W. Williams	Map stamp
J. P. Macaskie	Line engraved postcards
G. F. George	5 cents Registered

Class 3a.

S. F. Cohen	Postmarks on Large Head Issue
P. Walker	Newfoundland Postal Stationery
J. A. Grant	19th century postmarks
G. F. George	3 cents small queen Montreal printings
F. Laycock	Pence Issues
A. H. Downing	1859 postal rates
M. W. Carstairs	Letter and Initial cancels

Class 3b.

L. D. Carn	Special Deliveries 1898-1946
C. W. Hollingsworth	1913 slogan covers
I. Taylor	Modern slogan errors
M. W. Carstairs	Booklet panes
P. Walker	Newfoundland postal stationery
R. B. Hetherington	Winnipeg precancels
J. Ashcroft	History of Canada on stamps

Non-competitive

R. G. Woodall	'The story of the R.M.S. Nascopie'
---------------	------------------------------------

post offices of

Saskatchewan

By Dr. J. G. Byth

'W' continued	113. Wood Mountain	3. Yellow Grass
98. Winter	114. Wood Mountain Station	4. <i>Yeomans</i>
99. Winthorpe	115. <i>Woodrock</i>	5. <i>Yonker</i>
100. Winton	116. Woodrow	6. Yorkton
101. <i>Winton Hill</i>	117. Worcester	7. <i>Yorkton R.C.A.F.</i>
102. <i>Wirral</i>	118. Wordsworth	8. Young
103. Wiseton	119. <i>Wrightville</i>	9. <i>Ypres</i>
104. Wishart	120. Wroxton	Z.
105. <i>Witchekan</i>	121. <i>Wycollar</i>	1. <i>Zala</i>
106. <i>Wiwa Hill</i>	122. Wymark	2. Zelandia
107. <i>Wolfe</i>	123. Wynot	3. Zehner
108. Wollaston Lake	124. Wynard	4. Zelma
109. Wolseley	Y.	5. Zeneta
110. Wood Hill	1. Yarbo	6. Zénon Park
111. Woodley	2. Yellow Creek	7. <i>Zorra</i>
112. <i>Woodlight</i>		8. <i>Zumbro</i>

N.B. Italics indicate 'office closed'

changes of address

A number of notices for the payment of subscriptions have been returned recently marked 'Gone away'. Would members please note to advise the Secretary as soon as possible of any change of address. In this way they will ensure that their copies of *Maple Leaves* are received safely.

1 annual 9 general 6 meeting 9

Secretary's Report. Dr. C. W. Hollingsworth said that the total number of members remained the same as 45 new members balanced 45 removals. The figures for the year were as follows:—

	1968-69	1967-68
New members	42	78
Rejoined	3	5
	45	83
<i>Removals:</i>		
Deaths	9	15
Resignations	16	16
Rule 6	20	20
Net change	Nil	plus 32
Total	681	681

He again requested that members writing to Society officers print their names and give membership number and that all members check their year book entry and report any errors. Anyone holding supplies of the society application forms was asked to amend the subscription from £1 to 30s.

Exchange Packet Secretary, Dr. M. W. Carstairs reported a drop in business—during the year ended 30th September 1969, 16 packets valued at £2,534 were returned from circulation. Sales averaged at just under £56 or 36 per cent bringing in a total of £919.

Last year's figures were: total sales £1,236 from 22 packets valued at £3,566 giving a 34 per cent sale rate. Commission was £92 and surplus for the year £66, but in spite of the lower figure £100 was transferred to the General fund.

Mini packets of 12 books in light plastic box were well received and there were fewer delays due to holidays.

The Editor, L. F. Gillam, said that it is intended to maintain the present format for at least the duration of volume 13; rising costs would necessitate increased printing charges with effect from February 1970; contributions were urgently needed for future issues; and a questionnaire asking for members wishes on future articles would be inserted in the December issue.

Mr. Bruce Auckland, the first Editor of *Maple Leaves*, regretted that the cover only bore one Maple Leaf and asked if the original state could be restored. The Editor said a change of cover would be considered when and if the format were changed.

Mr. Cohen suggested that a competition might be run to encourage articles from new authors.

Convener of Study. It was decided that this post should now be dropped and members were referred to leaders of appropriate study groups.

The Handbooks Manager, S. F. Cohen, said that during the year almost all the remaining handbooks were sold and the Society would suffer a decline in income from this source. The Committee are considering various reprints and new editions but nothing definite was decided.

The Advertising Manager, G. F. George, said two new trade advertisers took space, and 13 members took small ads., of whom 5 had 2 or more repeats.

The Librarian, R. S. B. Greenhill, reported that 79 members borrowed 132 books—mainly new members: It was not proposed to reprint early out of stock *Maple Leaves*, but a waiting list for missing copies is kept.

Financial Report. The Treasurer, J. A. Grant, said there was a surplus of £65 for the year. The Life membership fund is almost exhausted and further transfers from the Convention or General funds would not be made to the Life Membership fund after 30/9/69 and that transfers from the Life Membership fund to the General fund would be made only in respect of those becoming Life members after 1/10/68.

President's Badge of Office. It was decided to open a fund to provide a president's badge of office, suggesting a maximum donation of 10s. or \$1.50. A notice appears in this issue.

Exchange Packet in Canada. In answer to a query on this point it was decided that it was not a practical proposition to run a packet circuit in Canada.

Convention Photograph—It was left to each President to decide whether he wished to arrange a Convention photograph.

Decimal Currency and the exchange packet. After June 1970 all new books sent in for the packet should be marked in £. s. d. and decimal currency.

Air Mail for Maple Leaves. It was decided that it was not a workable proposition to send *Maple Leaves* to overseas members by airmail.

Fellowship Award. No nominations for Fellowship had been received.

Appointments.

	<i>President</i>	<i>Nomination</i>	<i>Proposer</i>	<i>Seconder</i>
Vice-President (South)	W. Williams	J. E. Bielby	R. S. B. Greenhill	
Scotland	J. J. Bonar	J. Hannah	J. Grant	
North	I. T. Pickering	C. W. Hollingsworth	J. E. Bielby	
South	R. B. Hetherington	W. Williams	M. W. Carstairs	
Treasurer	J. A. Grant	J. J. Bonar	J. Hannah	
Asst. Treasurer	A. F. L. McGregor	G. Whitworth	W. Williams	
Secretary	C. W. Hollingsworth	J. E. Bielby	A. S. Mackie	
Auditor	J. P. Macaskie	R. S. B. Greenhill	I. T. Pickering	

Yorkshire Group

Mr. J. P. Macaskie has very kindly suggested that this Group is reformed with the centre in the Leeds/Bradford area, for the benefit of some of the newer members of the Society.

The first meeting will be held at 7.30 p.m. on Monday, 5th January at:—

Goosewell Gallery, Westbourne Drive,
Menston in Wharfedale.

Would any interested members please contact:—

F. LAYCOCK, Rombalds Stride, Maxwell Road,
Ilkley.
Tel: Ilkley 2053

who will willingly send a map and directions. All West Riding members do please come and bring a friend to get this new Group off to a good start.

S.O.S. (Mayday)

In our June number we reminded members that a few of our number are not as fortunately placed as the majority in so far as they live in isolated places abroad and far from contact with any like-minded fellow collectors. Our appeal for readers to come forward to help a lone member who wishes to exchange Canadian postmarks obviously fell on stony ground for not one inquiry was received.

Since then a member living in India has made an appeal for correspondents who are willing to exchange George VI booklet strips or panes with left hand margin, mint or used against older Canadian or Commonwealth stamps to get in touch with him.

Our member reminds us that foreign remittances are forbidden in India under exchange control regulations regarding 'luxury goods' so that any exchange would have to be on a catalogue or other agreed basis.

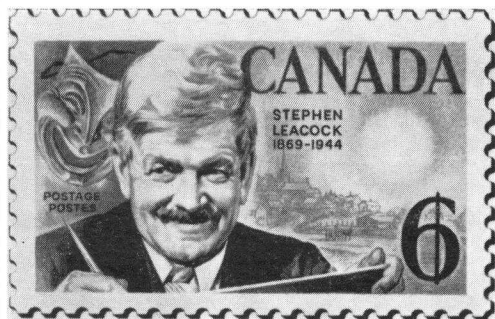
We shall be glad to supply names and addresses to any members who can assist in this (or former) cries for help.

Since we are approaching the season of 'goodwill towards all men' we are hopeful that this appeal will not fall on deaf ears.

Secret Dates

We are indebted to Mr. R. W. T. Lees-Jones for the following information regarding the position of the 'secret' dates on the 'bird' issues of 23rd July:

- 6 cents value: On twig end, between the two birds' tails.
- 10 cents value: On upright blade of grass and beak of bird.
- 25 cents: Between leg of bird and '25'.



new stamp issue

Stephen Leacock

A 6 cent commemorative stamp released by the Canada Post Office on the 12th November 1969 honours Stephen Butler Leacock, an internationally famous Canadian humorist, historian and economist, whose boyhood days were spent on his parents' farm some four miles from the south shore of Lake Simcoe in Ontario.

Leacock, one of a family of eleven, came to the pioneer farm lands of Canada some seven years after his birth on 30th December 1869 in the Hampshire, England, hamlet of Swanmore; he died on 28th March 1944 in Toronto where he had spent eighteen years commencing with five years as a student at Upper Canada College.

Thirty-four million Leacock stamps, horizontal in format with dimensions of 40mm. x 24mm., were printed by the designers, the British American Bank Note Company, Ottawa. Photogravure and steel engraving, utilizing green, yellow, red and black, have been combined to render a portrait and appropriate elements including the designer's concept of Mariposa, the fictitious small Ontario town made famous in Leacock's 'Sunshine Sketches of a Little Town'. Customary First Day Cover service was provided by the Postmaster, Ottawa 2, Ontario.

Stephen Leacock took his B.A. at Toronto in 1891 and Ph.D. at Chicago in 1903 after having been, in his words, . . . examined for the last time and pronounced completely full'. A memorable thirty-two years at Montreal's McGill commences with his appointment as that institution's first lecturer of political science and his memory is there perpetuated in a special section of the Redpath Library containing a comprehensive collection of his books and manuscripts; a further Leacock collection has been assembled in his former summer home at Orillia, Ontario, recently declared a National Historic Site, which has been preserved for more than ten years as a Memorial Home and Literary Shrine.

Reminder

Will members writing to Society Officers please print their name and quote their membership number in all communications to the Secretary.

CLASSIFIED ANNOUNCEMENTS

Reserved for members' small classified advertisements.
Special price 2d. a word for
C.P.S.G.B. members only.

WANTED

Dated copies Canada Large and Small Heads S.G.46-114. Admiral issues S.G. 196-256. Offers to J. Anderton, 43 Foxhill Court, Weetwood, Leeds 16.

Quebec Tercentenary $\frac{1}{2}$ cent-blocks or singles, mint or used. Killingley, 21 St. James' Road, Bridlington, Yorks.

Correspondence desired with anyone interested in postal history of Assiniboia. Write—Ronald Kell, 27 Briardene Close, Greenacres, East Herrington, Sunderland, Co. Durham. England.

THE CANADIAN PHILATELIC SOCIETY OF GREAT BRITAIN — 1969-70

President:

W. Williams, 53, Central Road, Wembley, Mdx.

Secretary:

Dr. C. W. Hollingsworth, F.C.P.S., 17 Mellish Road, Walsall, Staffs.

Treasurer:

J. A. Grant, 11, Gordon Road, Edinburgh, 12

Assistant Treasurer:

A. F. L. McGregor, 339, North Deeside Road, Cults, Aberdeen, AB1 9SN

Librarian:

R. S. B. Greenhill, F.C.P.S., The Shieling, Village Way, Little Chalfont, Amersham, Bucks.

Exchange Secretary:

Dr. M. W. Carstairs, 5, Tennyson Road, High Wycombe, Bucks.

Editor of Journal:

L. F. Gillam, F.C.P.S., 66 East Bawtry Road, Rotherham, Yorkshire

Publicity and Advertising Manager:

G. F. George, 'Woodbury', Trevone, Padstow, Cornwall

Handbooks

S. F. Cohen, F.C.P.S., 51, Westfield Road, Birmingham 15